

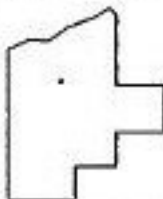
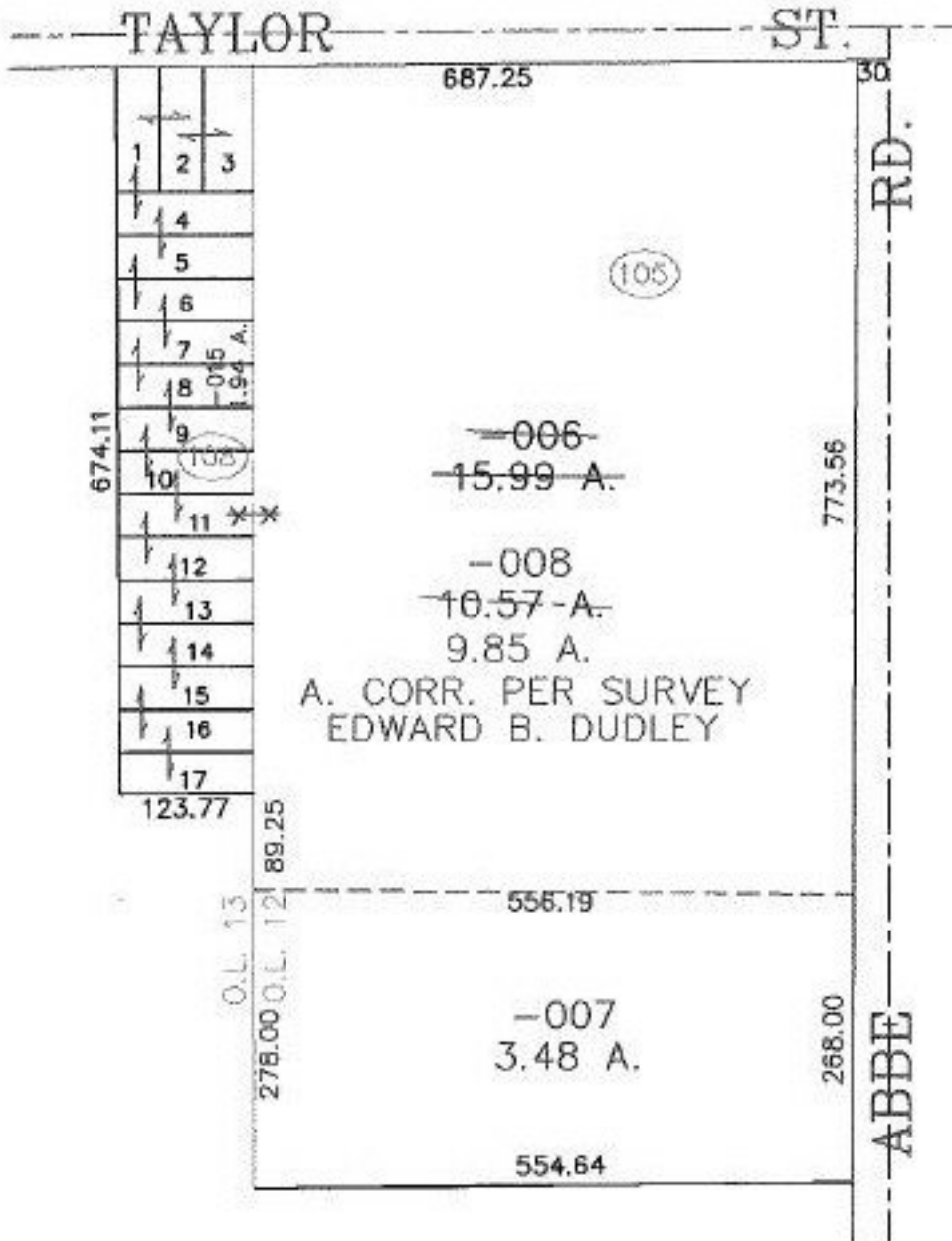
RASTER

PARENT PARCEL: 06-25-012-105-006

CHILD PARCEL: 06-25-012-105-007, -008 06-25-013-108-015

STARTING POINT: INTERSECTION OF TAYLOR ST. & ABBE RD.

NO. 01159



SPLITS/DEEDS PROCESSED
 LORAIN COUNTY TAX MAP DEPARTMENT
 226 MIDDLE AVE. ELYRIA, OHIO

SURVEYED BY: EDWARD B. DUDLEY
 CLOSURE: 0.00 : 10.000
 MAP PAGE(S): 6-106
 APPROVED BY: JAH DATE: 7-24-02
 SCALE: 1" = 200' PRIOR INSTRUMENT: 20010800192