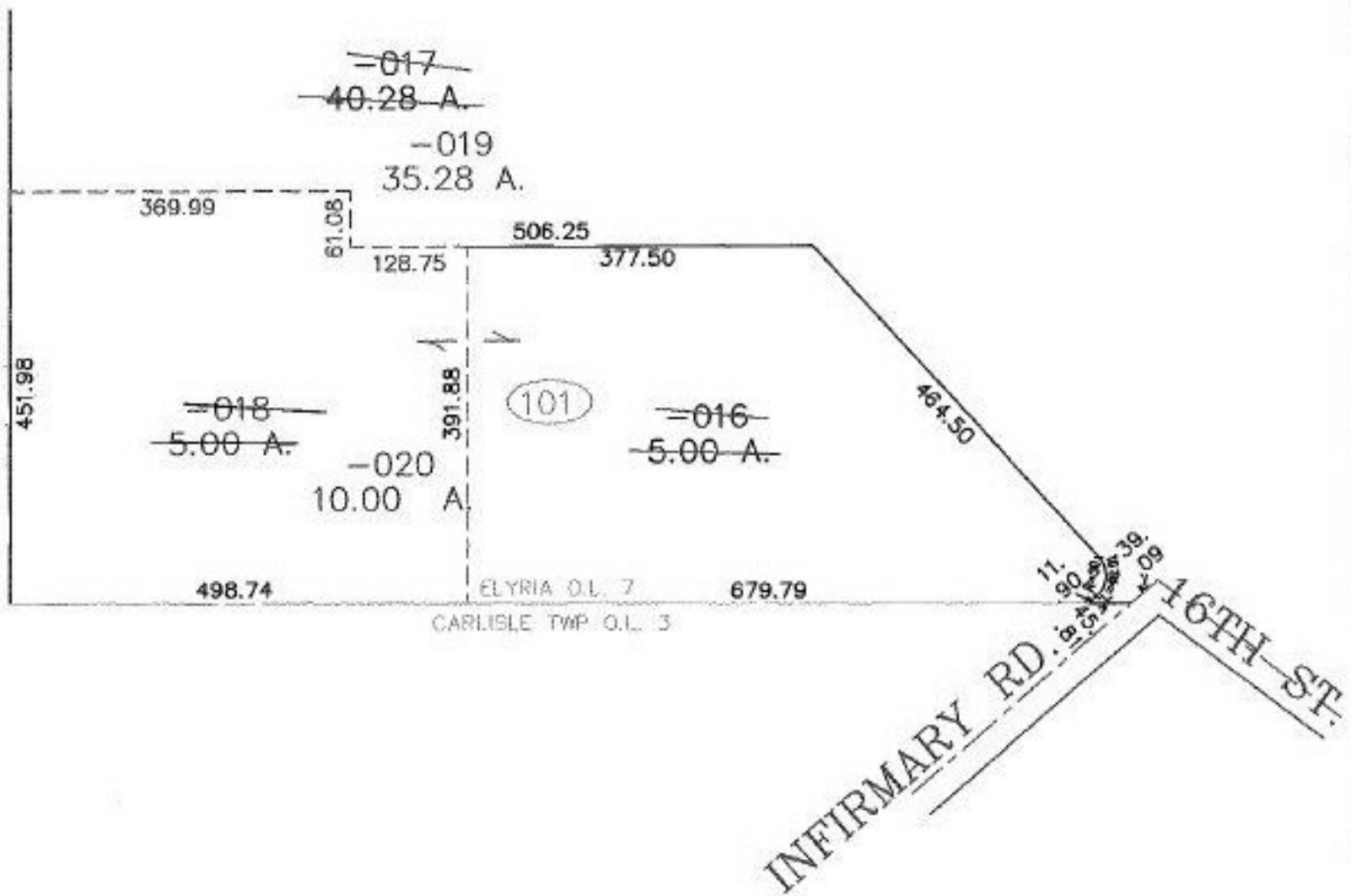


PARENT PARCEL: 06-24-007-101-017, -016

CHILD PARCEL: 06-24-007-101-018, -019

STARTING POINT: CENTERLINE OF INFIRMARY RD. & 16TH ST.

NO. 01143



SPLITS/DEEDS PROCESSED
LORAIN COUNTY TAX MAP DEPARTMENT
 226 MIDDLE AVE. ELYRIA, OHIO

SURVEYED BY: DAVID L. ELWELL
 CLOSURE: 0.00 : 10.000
 MAP PAGE(S): 6-133, 6-134
 APPROVED BY: JAH DATE: 7-17-02
 SCALE: 1" = 200' PRIOR INSTRUMENT: OR 11/8