

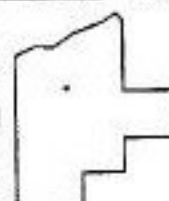
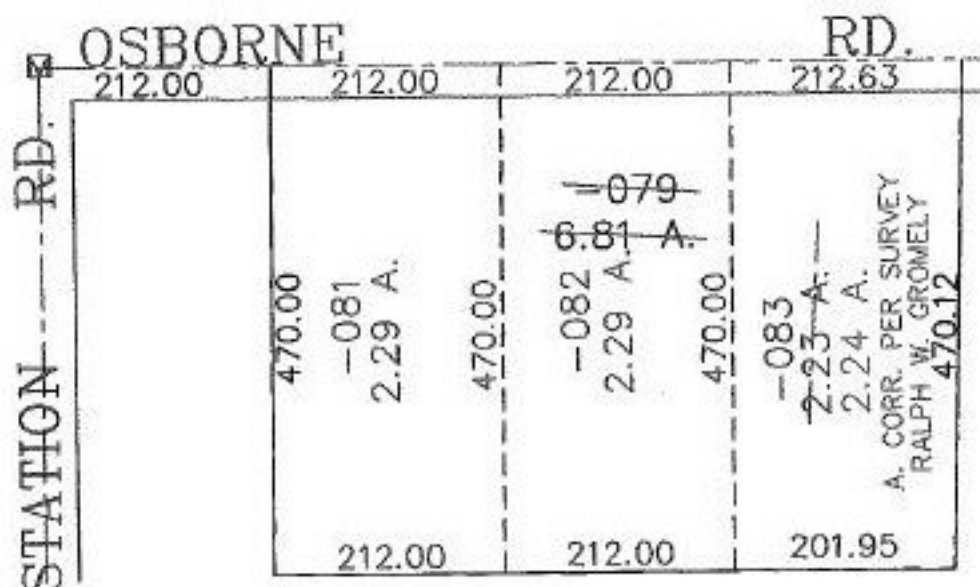
RASTER

PARENT PARCEL: 12-00-062-000-079

CHILD PARCEL: 12-00-062-000-081, -082, -083

STARTING POINT: CENTERLINE STATION RD. & OSBORNE RD.

NO. 01085



SPLITS/DEEDS PROCESSED
 LORAIN COUNTY TAX MAP DEPARTMENT
 226 MIDDLE AVE. ELYRIA, OHIO

SURVEYED BY: RALPH W. GROMELY
 CLOSURE: 0.00 : 10.000
 MAP PAGE(S): 12-00-062-A
 APPROVED BY: JAH DATE: 5-21-02
 SCALE: 1" = 200' PRIOR INSTRUMENT: 20010795304