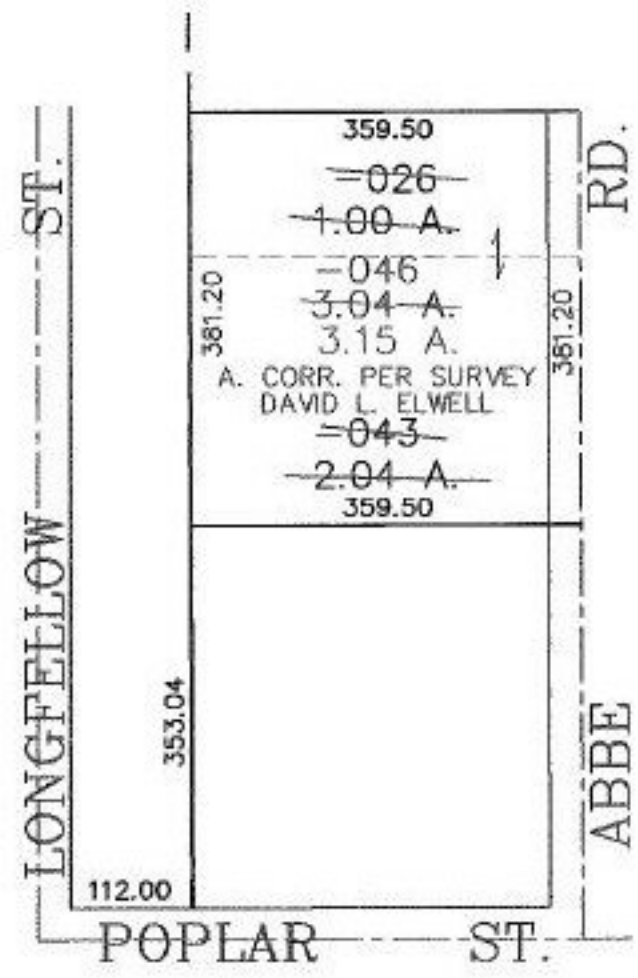


PASTER

PARENT PARCEL: 06-25-021-104-043 & -026  
CHILD PARCEL: 06-25-021-104-046  
STARTING POINT: SIDELINE OF POPLAR ST. & LONGFELLOW ST.

NO. 01084



**SPLITS/DEEDS PROCESSED**  
LORAIN COUNTY TAX MAP DEPARTMENT  
226 MIDDLE AVE. ELYRIA, OHIO

SURVEYED BY: DAVID L. ELWELL  
CLOSURE: 0.00 : 10.000  
MAP PAGE(S): 6-88  
APPROVED BY: JAH DATE: 5-21-02  
SCALE: 1" = 200' PRIOR INSTRUMENT: 20000690941