

PARENT PARCEL: 04-00-024-116-033

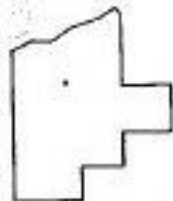
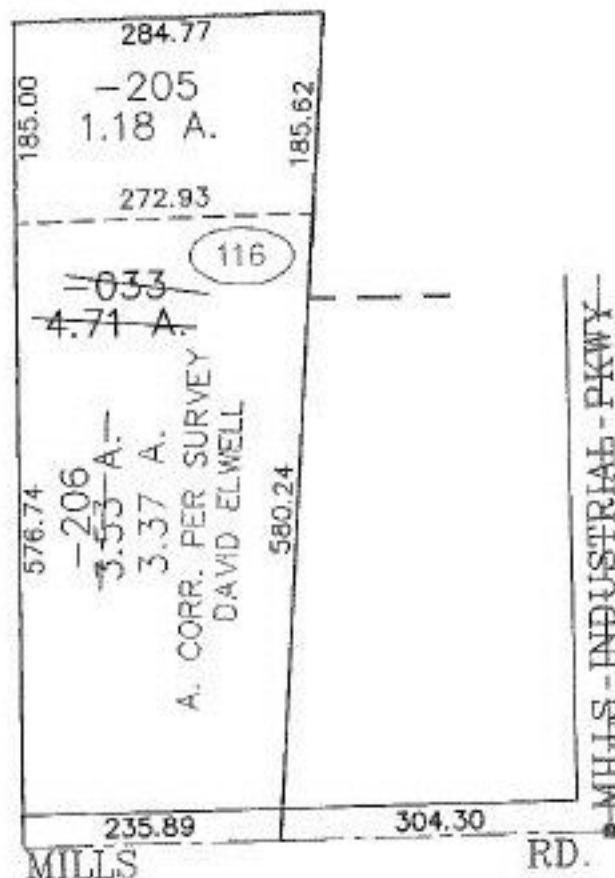
CHILD PARCEL: 04-00-024-116-205, -206

STARTING POINT: CENTERLINE OF MILLS RD. & MILLS INDUSTRIAL PKWY.

NO. 01047



RETAIL DEVELOPMENT NO. 4
VOL. 60 PG. 62-63



SPLITS/DEEDS PROCESSED
LORAIN COUNTY TAX MAP DEPARTMENT
226 MIDDLE AVE. ELYRIA, OHIO

SURVEYED BY: DAVID ELWELL
CLOSURE: 0.00 : 10.000
MAP PAGE(S): 4-00-024-G
APPROVED BY: TJS DATE: 10/25/10
SCALE: 1" = 200' PRIOR INSTRUMENT: DV XXXX/XXX