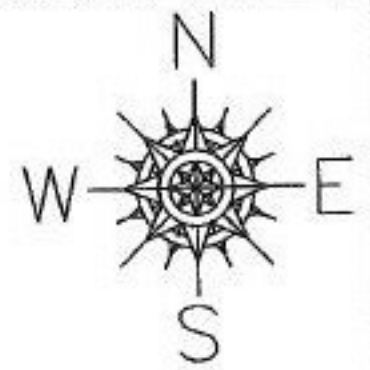


RASTER

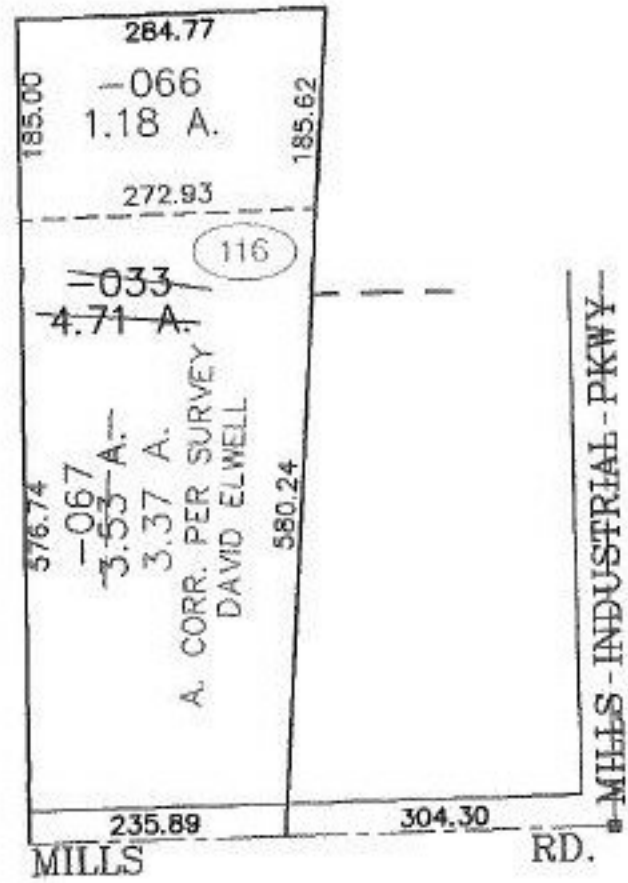
NO. 01047

PARENT PARCEL: 04-00-024-116-033  
CHILD PARCEL: 04-00-024-116-066, -067  
STARTING POINT: CENTERLINE OF MILLS RD. & MILLS INDUSTRIAL PKWY.

VOID



RETAIL DEVELOPMENT NO. 4  
VOL. 60 PG. 62-63



**SPLITS/DEEDS PROCESSED**  
LORAIN COUNTY TAX MAP DEPARTMENT  
226 MIDDLE AVE. ELYRIA, OHIO

SURVEYED BY: DAVID ELWELL  
CLOSURE: 0.00 : 10.000  
MAP PAGE(S): 4-00-024-G  
APPROVED BY: JAH DATE: 4-15-02  
SCALE: 1" = 200' PRIOR INSTRUMENT: DV XXXX/XXX