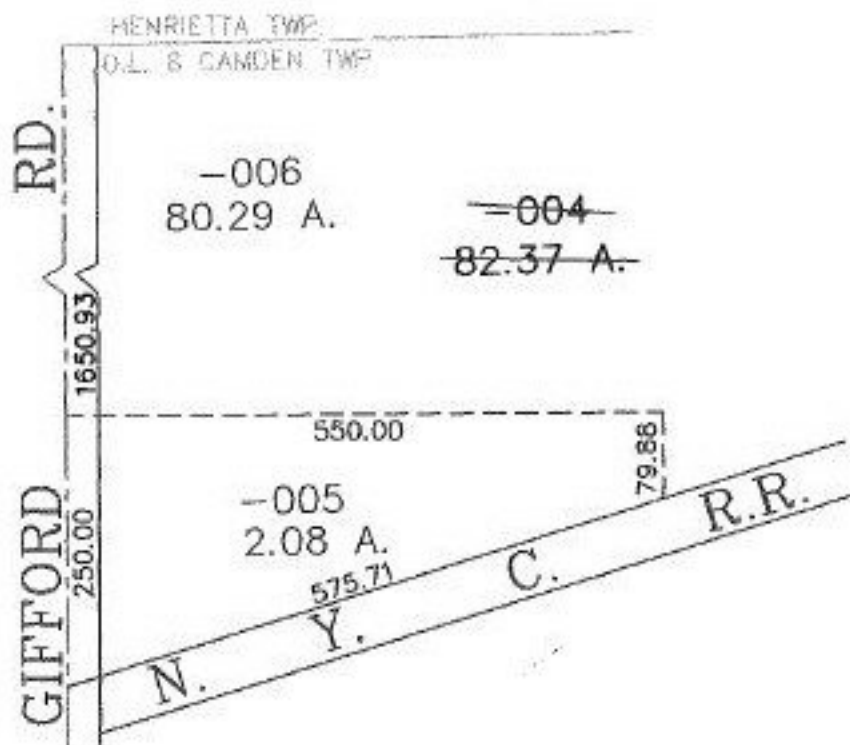


PARENT PARCEL: 13-11-008-000-004

CHILD PARCEL: 13-11-008-000-005, -006

STARTING POINT: CENTERLINE OF GIFFORD RD. & O.L. 8

NO. 01025



SPLITS/DEEDS PROCESSED
 LORAIN COUNTY TAX MAP DEPARTMENT
 226 MIDDLE AVE. ELYRIA, OHIO

SURVEYED BY: THOMAS A. SIMON
 CLOSURE: 0.00 : 10.000
 MAP PAGE(S): 13-D
 APPROVED BY: JAH DATE: 3-29-02
 SCALE: 1" = 200' PRIOR INSTRUMENT: DV 1236/69