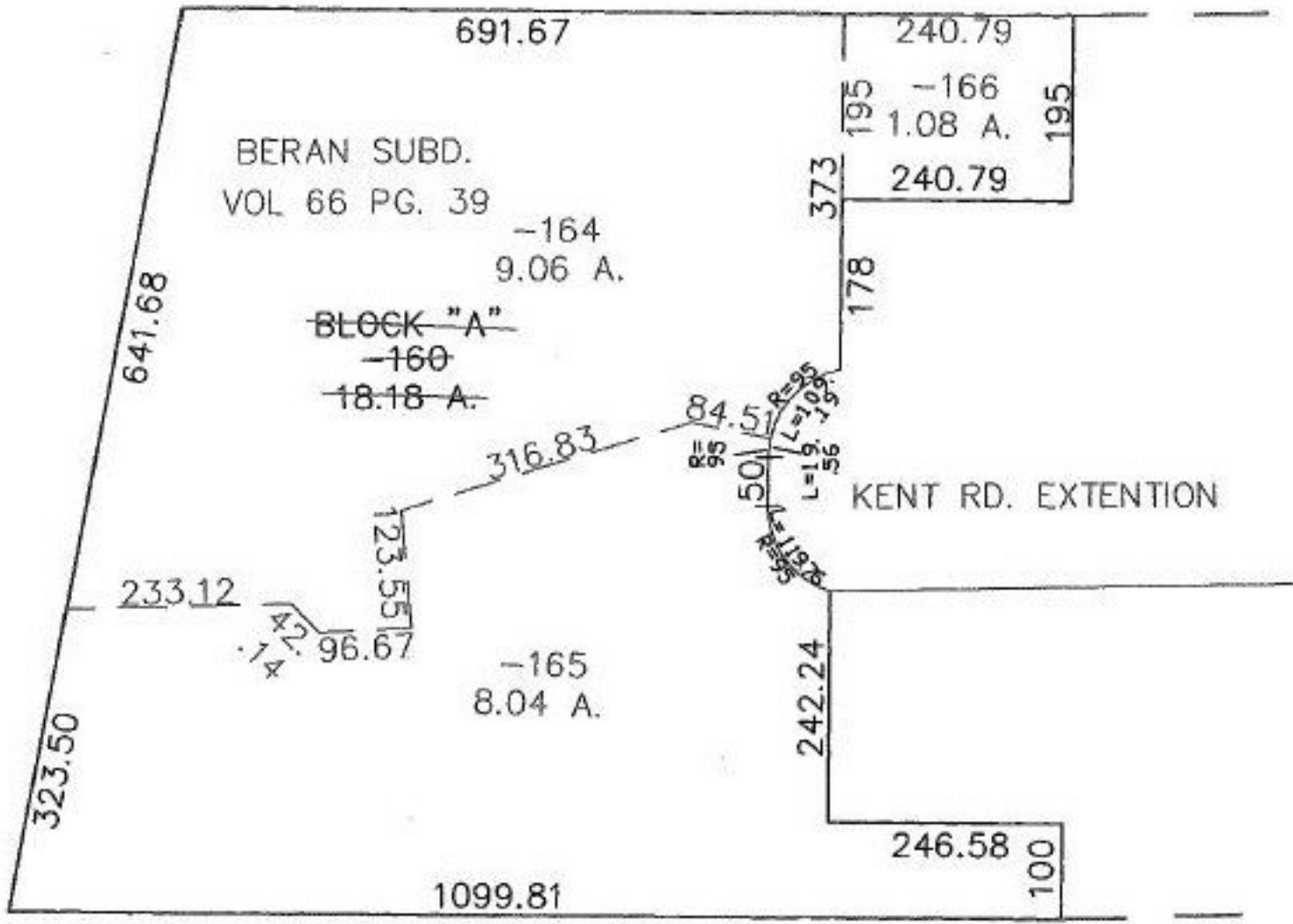


RASTER

PARENT PARCEL: 18-00-026-101-160
CHILD PARCEL: 18-00-026-101-164 THRU -166
STARTING POINT: WESTERLY CORNER OF S/L 1 OF BERAN SUBDIVISION

NO. 01018



SPLITS/DEEDS PROCESSED
LORAIN COUNTY TAX MAP DEPARTMENT
226 MIDDLE AVE. ELYRIA, OHIO

SURVEYED BY: ERIC J. NELSON
CLOSURE: 0.01 : 10.000
MAP PAGE(S): 18-00-026-A B
APPROVED BY: JAH DATE: 3-21-02
SCALE: 1" = 200 PRIOR INSTRUMENT: 20000688713