

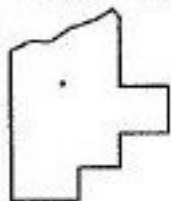
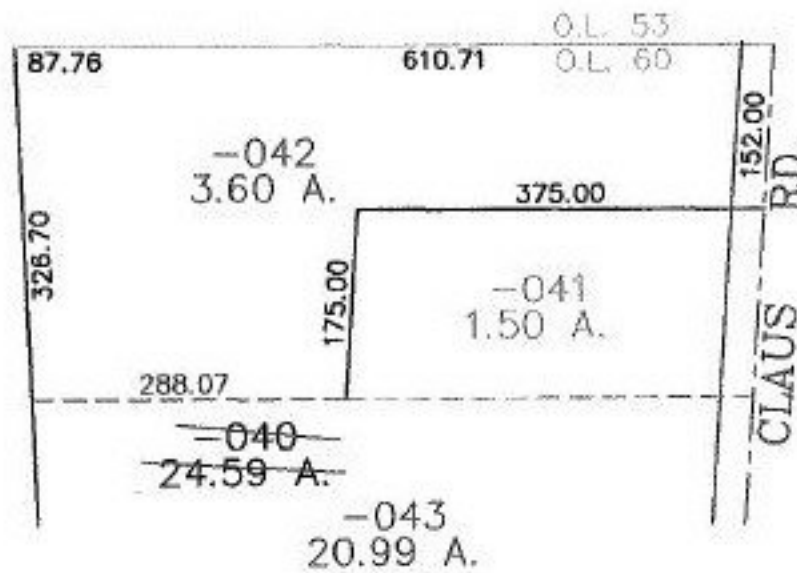
RASTER

PARENT PARCEL: 01-00-060-000-040

CHILD PARCEL: 01-00-060-000-042, -043

STARTING POINT: CENTERLINE OF CLAUS RD. & O.L. 60

NO. 00966



**SPLITS/DEEDS PROCESSED**  
**LORAIN COUNTY TAX MAP DEPARTMENT**  
 226 MIDDLE AVE. ELYRIA, OHIO

SURVEYED BY: CHARLES P. WARYU  
 CLOSURE: 0.00 ; 10.000  
 MAP PAGE(S): 1-K  
 APPROVED BY: JAH DATE: 1-18-02  
 SCALE: 1" = 200' PRIOR INSTRUMENT: OR 591/487