

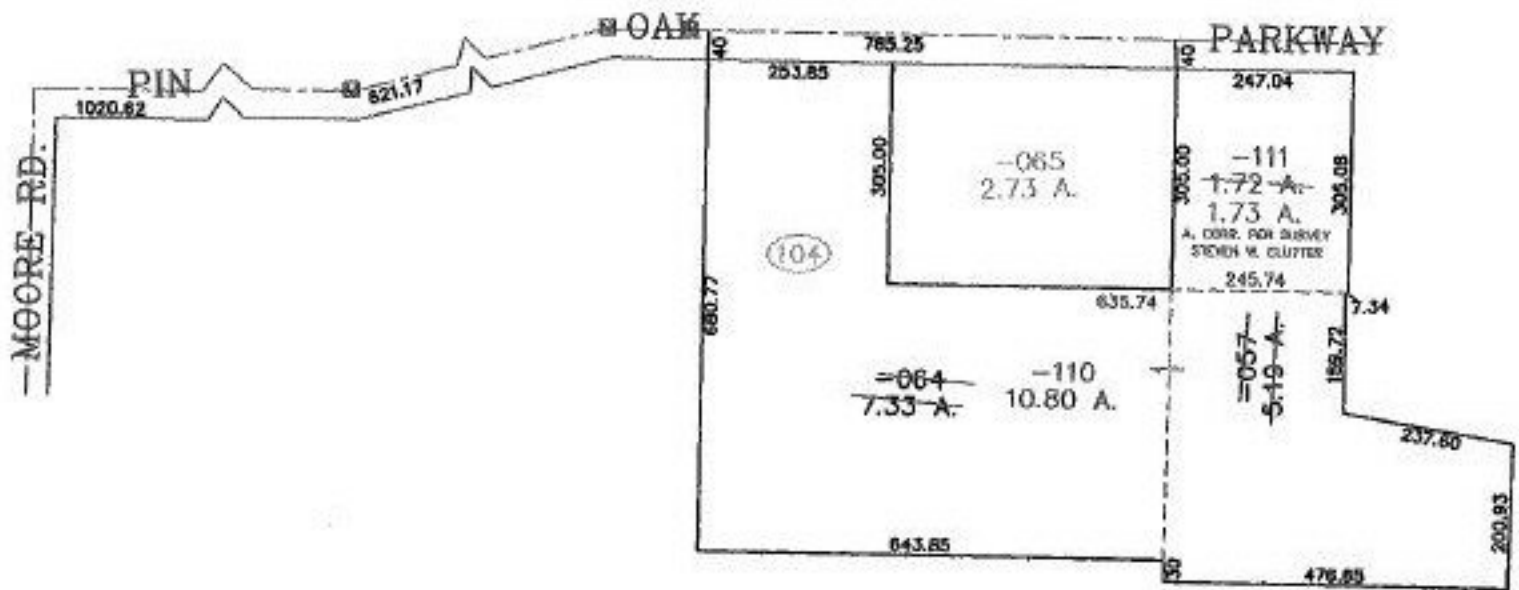
RASTER

PARENT PARCEL: 04-00-008-104-057, -064

CHILD PARCEL: 04-00-008-104-110, -111

STARTING POINT: CENTERLINE OF MOORE RD. & PIN OAK PARKWAY

NO. 00962



SURVEYED BY: STEVEN W. CLUTTER
 CLOSURE: 0.00 : 10.000
 MAP PAGE(S): 4-00-008-F
 APPROVED BY: JAH DATE: 1-11-02
 SCALE: 1" = 300 PRIOR INSTRUMENT: 2001768363



SPLITS/DEEDS PROCESSED
 LORAIN COUNTY TAX MAP DEPARTMENT
 226 MIDDLE AVE. ELYRIA, OHIO