

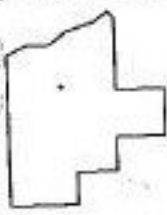
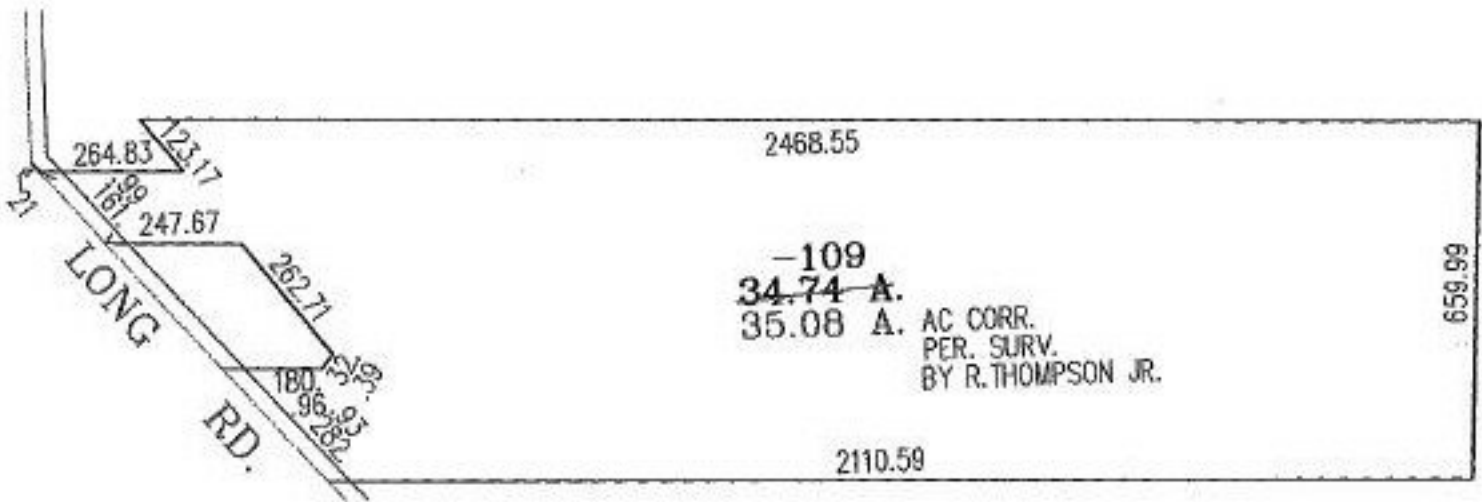
RASIER

PARENT PARCEL: 04-00-011-107-109

CHILD PARCEL:

STARTING POINT: AT AN ANGLE POINT IN THE C/A OF LONG RD.

NO. 00779-A



SPLITS/DEEDS PROCESSED
LORAIN COUNTY TAX MAP DEPARTMENT
226 MIDDLE AVE. ELYRIA, OHIO

SURVEYED BY: RICHARD A. THOMPSON JR.
CLOSURE: 10:10.000
MAP PAGE(S): 4-00-011-E
APPROVED BY: RBM DATE: 12-3-02
SCALE: 1" = 400' PRIOR INSTRUMENT: OR 1130/902