

RASTER

PARENT PARCEL: 12-00-055-101-020

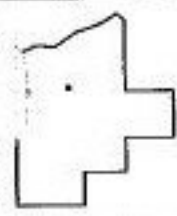
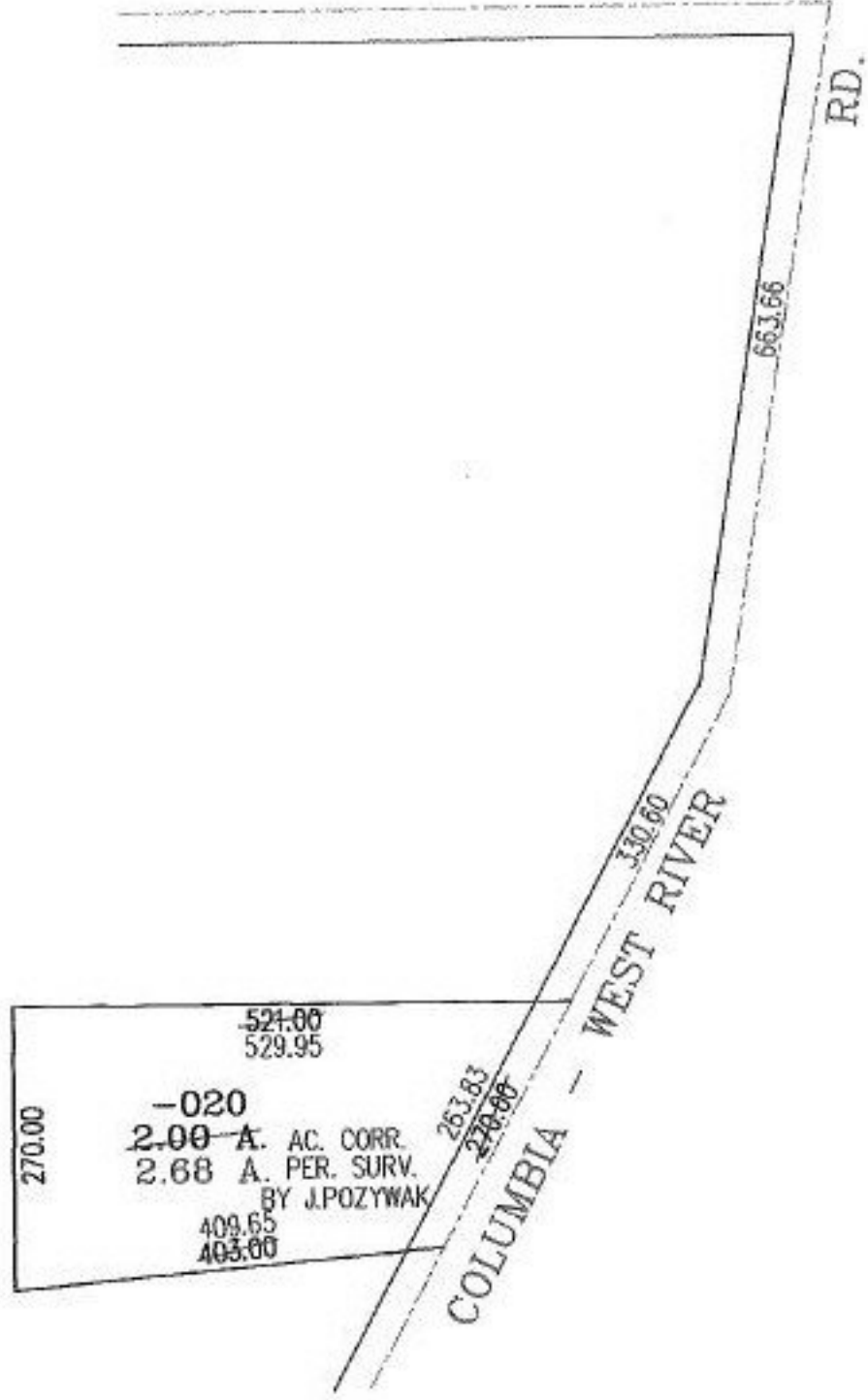
CHILD PARCEL:

STARTING POINT: INTERSECTION OF C/L OF ELYRIA-TWINSBURG RD. AND
C/L OF COLUMBIA-WEST RIVER RD.

NO. 00777-A



ELYRIA-TWINSBURG RD.



SPLITS/DEEDS PROCESSED

LORAIN COUNTY TAX MAP DEPARTMENT
226 MIDDLE AVE. ELYRIA, OHIO

SURVEYED BY: JOHN POZYWAK
CLOSURE: .08:10.000
MAP PAGE(S): 12-00-055-B
APPROVED BY: RBM DATE: 12-11-02
SCALE: 1" = 200' PRIOR INSTRUMENT: