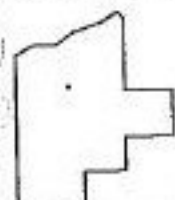
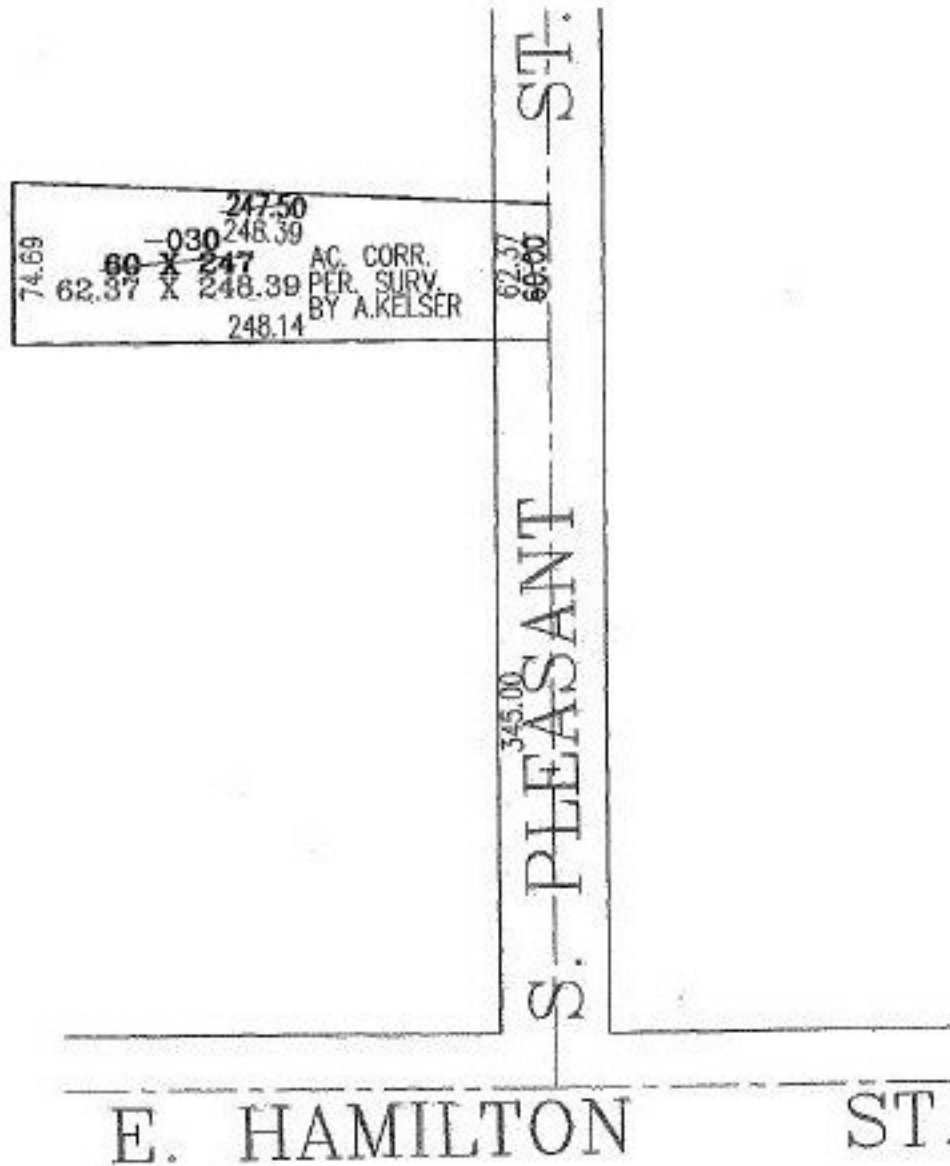


PARENT PARCEL: 09-00-096-104-030

CHILD PARCEL:

STARTING POINT: INTERSECTION OF C/L OF S. PLEASANT ST. AND C/L OF E. HAMILTON ST.

NO. 00758-A



SPLITS/DEEDS PROCESSED

LORAIN COUNTY TAX MAP DEPARTMENT
226 MIDDLE AVE. ELYRIA, OHIO

SURVEYED BY: ALEX KELSER
 CLOSURE: 00:10.000
 MAP PAGE(S): 9-00-096-A
 APPROVED BY: RBM DATE: 10-10-02
 SCALE: 1" = 100' PRIOR INSTRUMENT: 20010799105