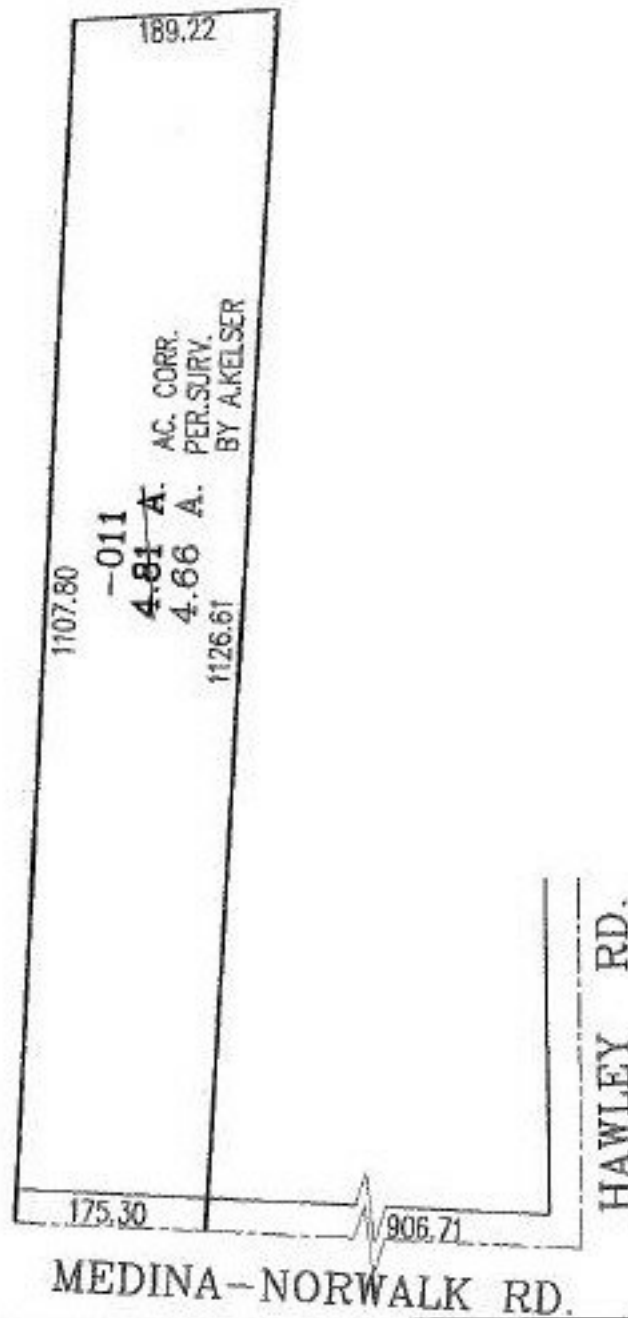


PARENT PARCEL: 18-00-016-000-011

CHILD PARCEL:

STARTING POINT: INTERSECTION OF C/L OF MEDINA-NORWALK RD. AND C/L OF HAWLEY RD.

NO. 00752-D



SPLITS/DEEDS PROCESSED
 LORAIN COUNTY TAX MAP DEPARTMENT
 226 MIDDLE AVE. ELYRIA, OHIO

SURVEYED BY: ALEX KELSER
 CLOSURE: 00:10.000
 MAP PAGE(S): 18-00-016-D
 APPROVED BY: RRM DATE: 10-16-02
 SCALE: 1" = 200' PRIOR INSTRUMENT: 990611088