

RASTER

PARENT PARCEL: 13-09-034-000-025

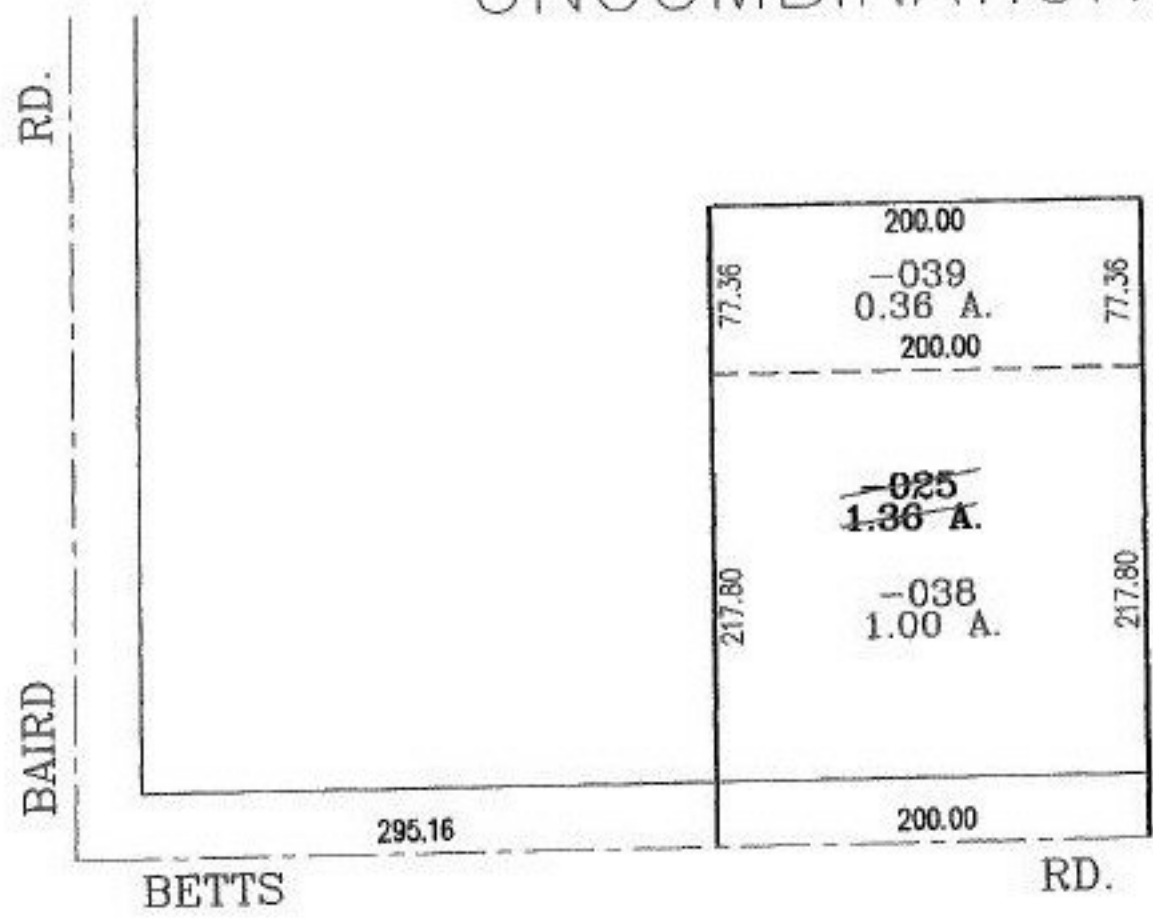
CHILD PARCEL: 13-09-034-000-038, -039

STARTING POINT: INTERSECTION OF C/LOF BAIRD RD. AND C/L OF BETTS RD.

NO. 00731-U



UNCOMBINATION



SPLITS/DEEDS PROCESSED

LORAIN COUNTY TAX MAP DEPARTMENT
226 MIDDLE AVE. ELYRIA, OHIO

SURVEYED BY: ARNOLD F. KOEPP
 CLOSURE: 00:10.000
 MAP PAGE(S): 13-F
 APPROVED BY: RRM DATE: 7-17-02
 SCALE: 1" = 100' PRIOR INSTRUMENT: _____