

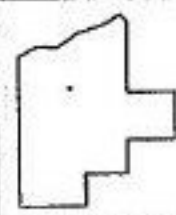
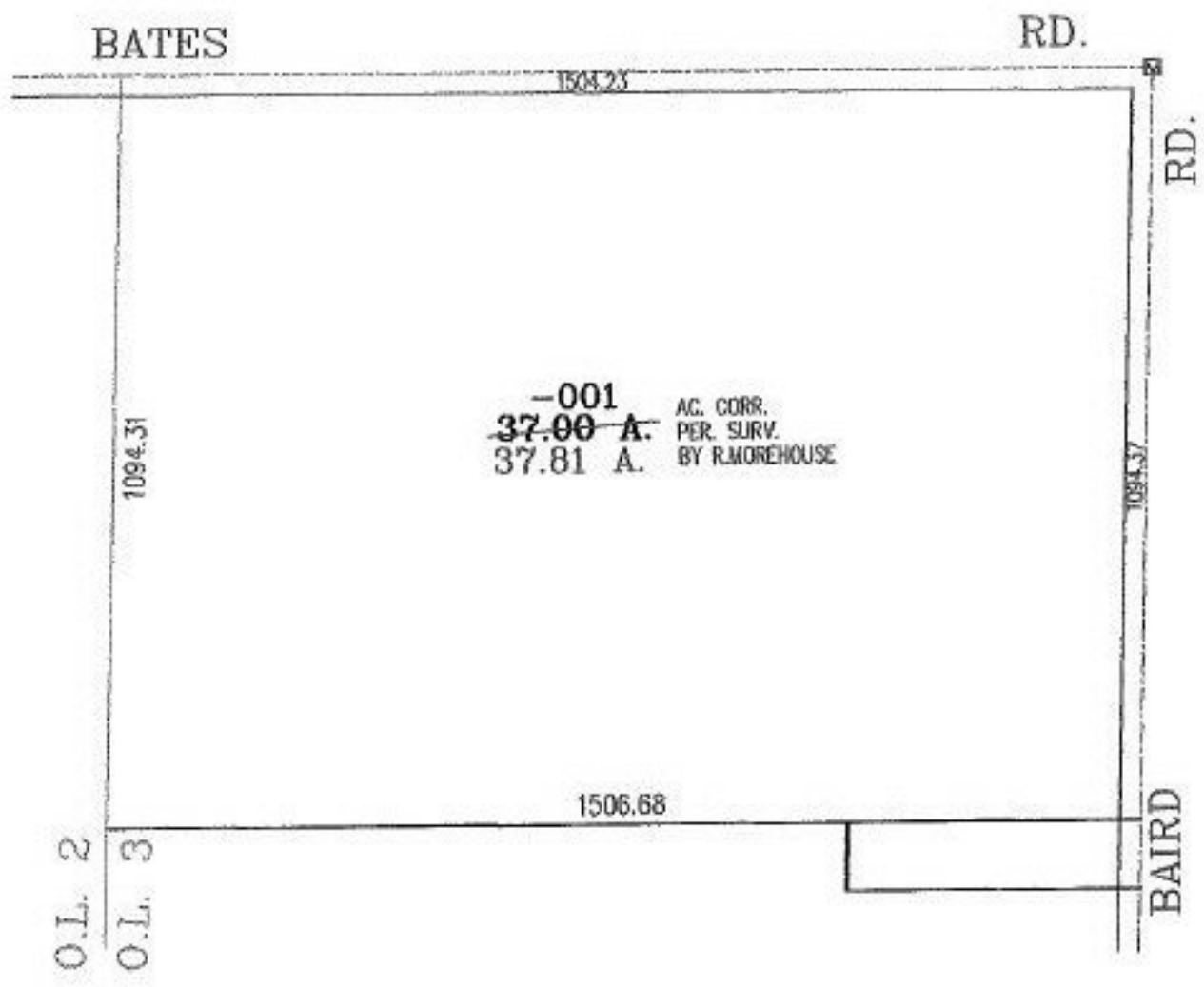
RASIFR

PARENT PARCEL: 13-11-003-000-001

NO. 00722-A

CHILD PARCEL:

STARTING POINT: INTERSECTION OF C/L OF BAIRD RD. AND C/L OF BATES RD.



SPLITS/DEEDS PROCESSED
LORAIN COUNTY TAX MAP DEPARTMENT
 226 MIDDLE AVE. ELYRIA, OHIO

SURVEYED BY: RONALD A. MOREHOUSE
 CLOSURE: 10:10.000
 MAP PAGE(S): 13-B
 APPROVED BY: RRM DATE: 5-31-02
 SCALE: 1" = 300' PRIOR INSTRUMENT: OR 1199/854