

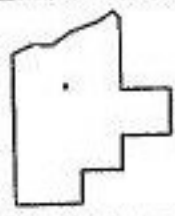
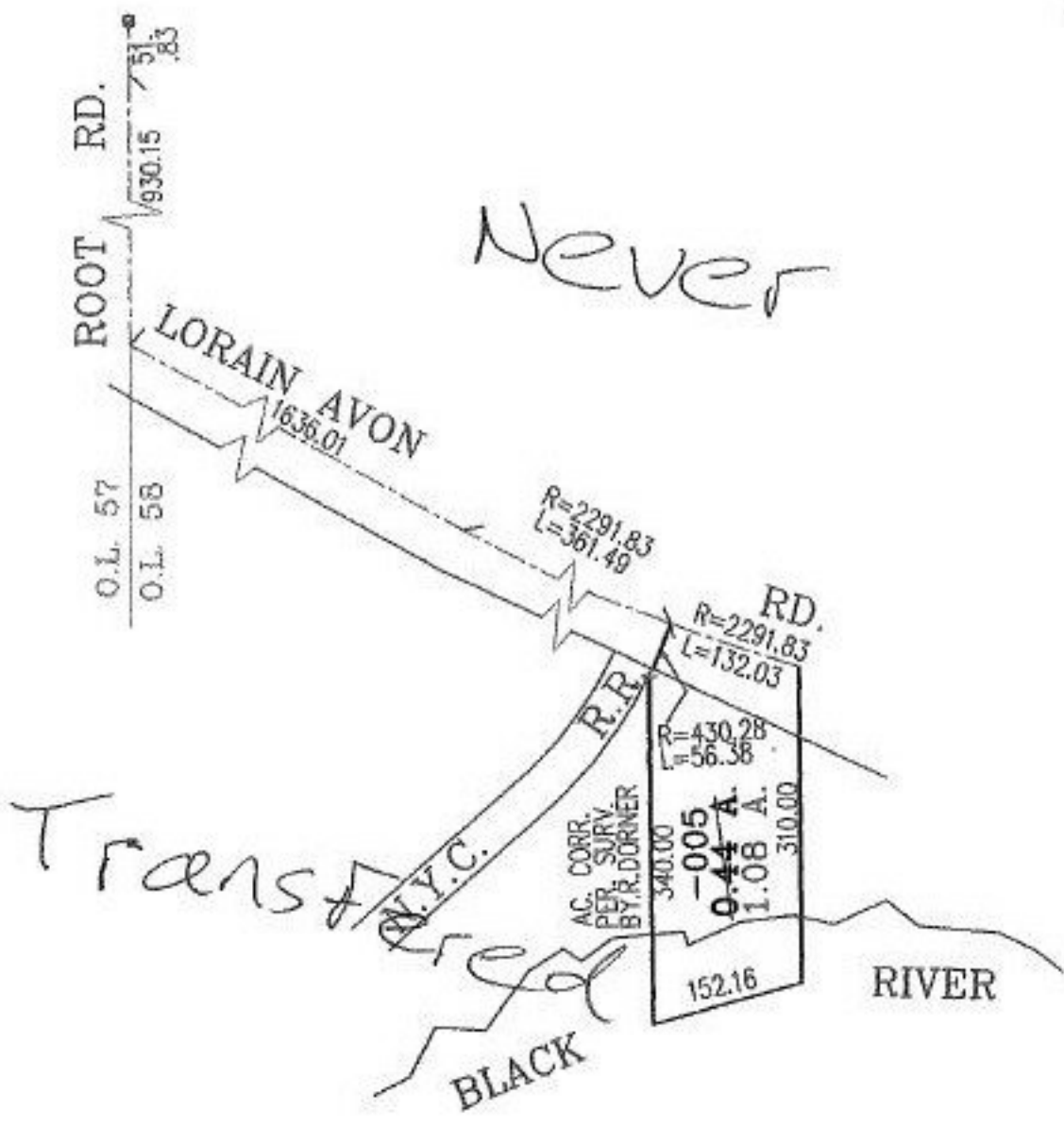
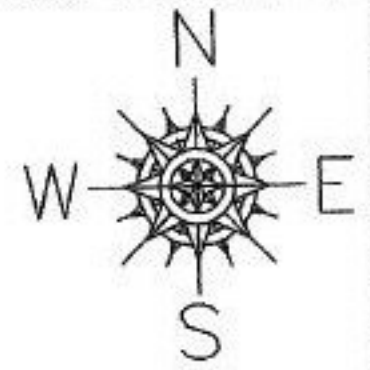
Never trans

PARENT PARCEL: 03-00-059-000-005

NO. 00719-D

CHILD PARCEL:

STARTING POINT: AT A MON BOX ON THE C/L OF ROOT RD.



SPLITS/DEEDS PROCESSED
 LORAIN COUNTY TAX MAP DEPARTMENT
 226 MIDDLE AVE. ELYRIA, OHIO

SURVEYED BY: ROBERT A. DORNER
 CLOSURE: 04:10.000
 MAP PAGE(S): 3-00-059-B
 APPROVED BY: RRM DATE: 5-30-02
 SCALE: 1" = 200' PRIOR INSTRUMENT: DV 858/230