

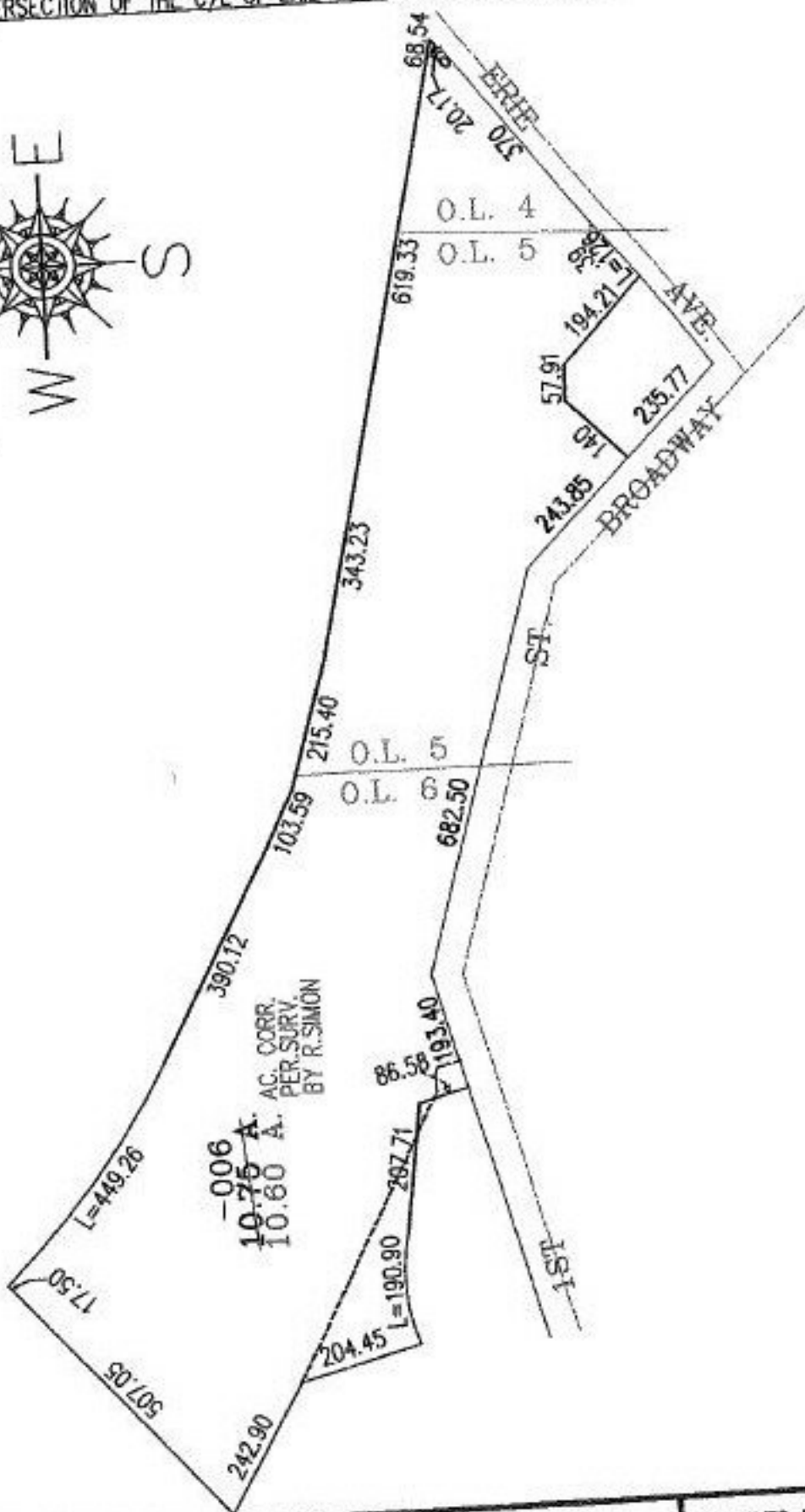
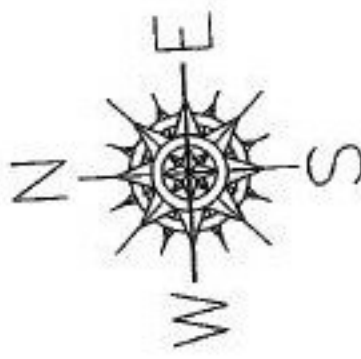
CASE #

NO. 00707-A

PARENT PARCEL: 02-01-006-101-006

CHILD PARCEL:

STARTING POINT: INTERSECTION OF THE C/L OF ERIE AVE. AND C/L OF BROADWAY



AC. CORR.  
PER. SURV.  
BY R. SIMON

~~10.75~~ A.  
10.60 A.

~~006~~

SPLITS/DEEDS PROCESSED

LORAIN COUNTY TAX MAP DEPARTMENT  
226 MIDDLE AVE. ELYRIA, OHIO

SURVEYED BY: R. SIMON

CLOSURE: 02:10.000

MAP PAGE(S): 2-01-004-A, 2-01-006-A

APPROVED BY: RRM DATE: 4-26-02

SCALE: 1" = 300' PRIOR INSTRUMENT: