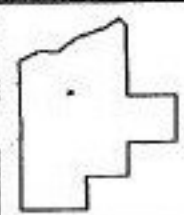
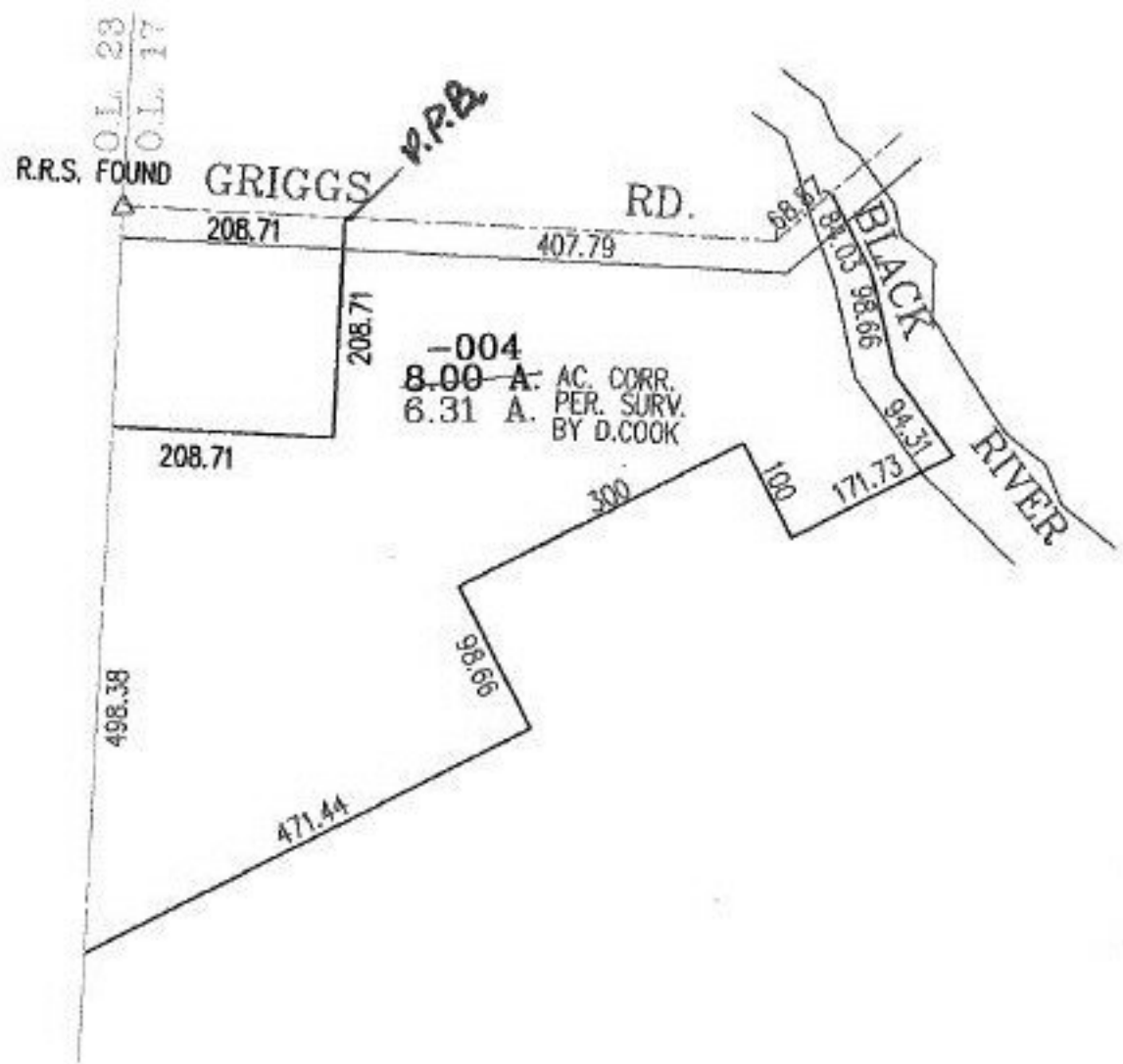


MASTER

NO. 00704-A

PARENT PARCEL: 20-05-017-102-004  
CHILD PARCEL:  
STARTING POINT: AT A R.R.S. AT THE INTERSECTION OF WEST LINE OF O.L.17  
AND C/L OF GRIGGS RD.



**SPLITS/DEEDS PROCESSED**  
LORAIN COUNTY TAX MAP DEPARTMENT  
226 MIDDLE AVE. ELYRIA, OHIO

SURVEYED BY: DANIEL J. COOK  
CLOSURE: 02:10.000  
MAP PAGE(S): 20-05-017-A  
APPROVED BY: RRM DATE: 4-16-02  
SCALE: 1" = 200' PRIOR INSTRUMENT: DV 759/69