

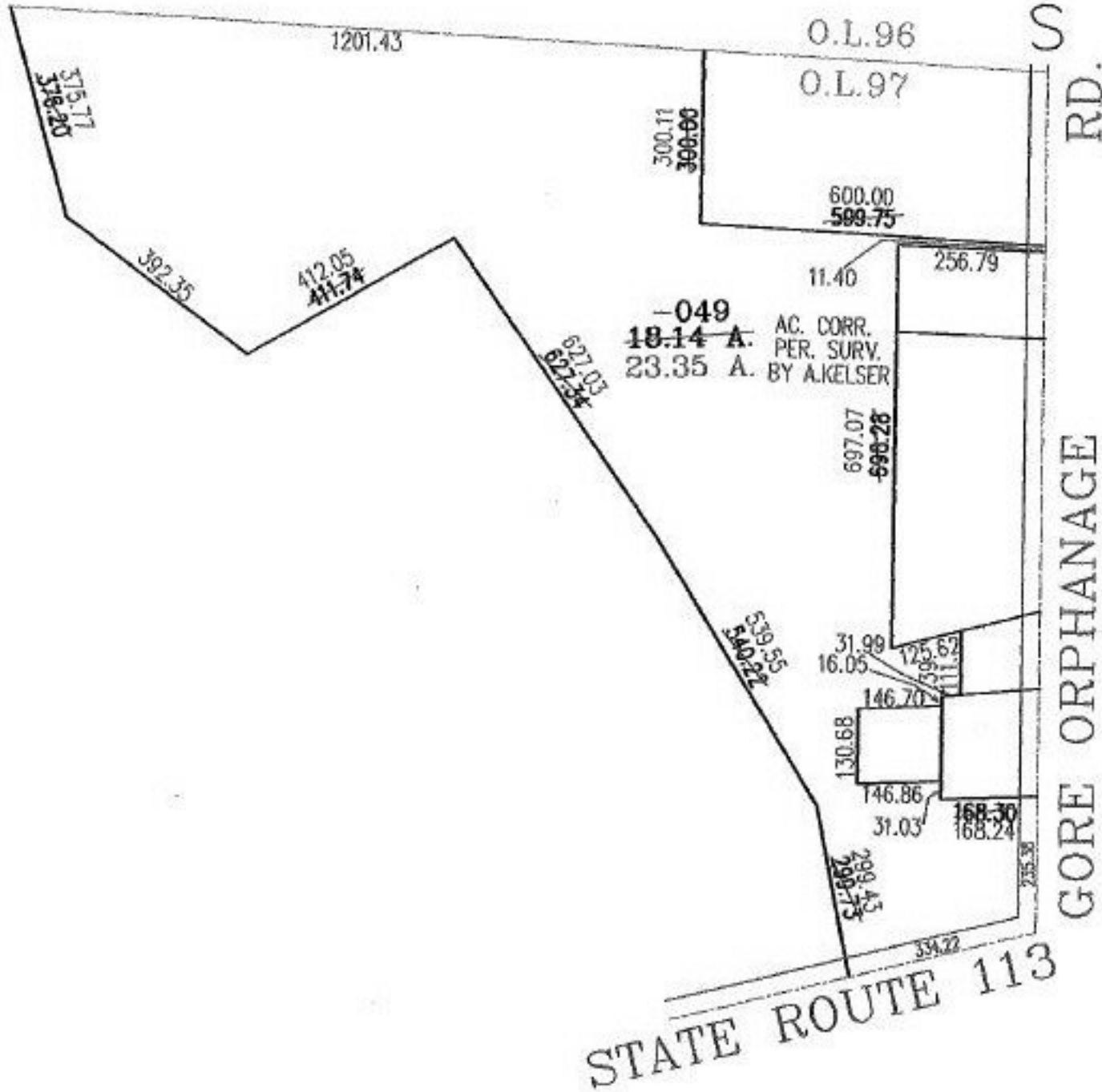
RASTER

PARENT PARCEL: 08-00-097-000-049

CHILD PARCEL:

STARTING POINT: INTERSECTION OF C/L OF S.R.113 AND C/L GORE ORPHANAGE RD.

NO. 00692-A



**SPLITS/DEEDS PROCESSED**  
 LORAIN COUNTY TAX MAP DEPARTMENT  
 226 MIDDLE AVE. ELYRIA, OHIO

SURVEYED BY: ALEX KELSER  
 CLOSURE: .03:10.000  
 MAP PAGE(S): 8-A  
 APPROVED BY: RRM DATE: 6-5-02  
 SCALE: 1" = 300' PRIOR INSTRUMENT: