

RASTER

PARENT PARCEL: 06-26-057-000-011,-012

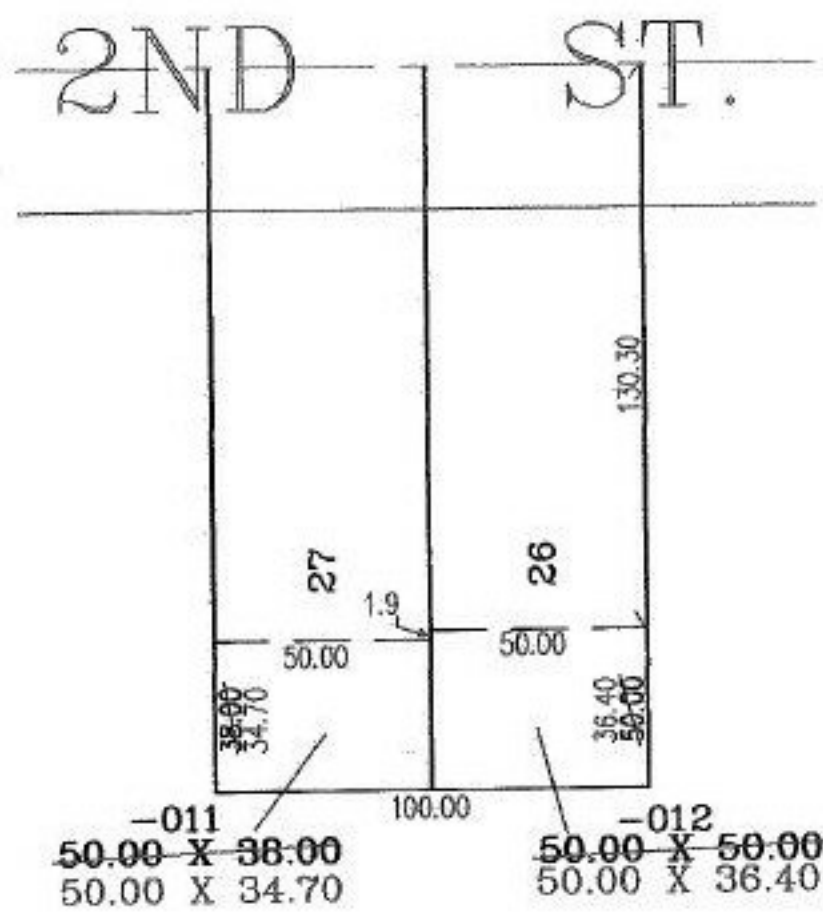
CHILD PARCEL:

STARTING POINT: C/L OF 2ND ST

NO. 00688-D



DEPTH CORRECTION



SPLITS/DEEDS PROCESSED
 LORAIN COUNTY TAX MAP DEPARTMENT
 226 MIDDLE AVE. ELYRIA, OHIO

SURVEYED BY: JOHN POZYWAK
 CLOSURE: 02:10.000
 MAP PAGE(S): 6-118
 APPROVED BY: RRM DATE: 4-24-02
 SCALE: 1" = 50' PRIOR INSTRUMENT: