

RASTER

PARENT PARCEL: 05-00-016-101-016

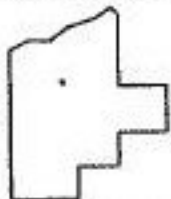
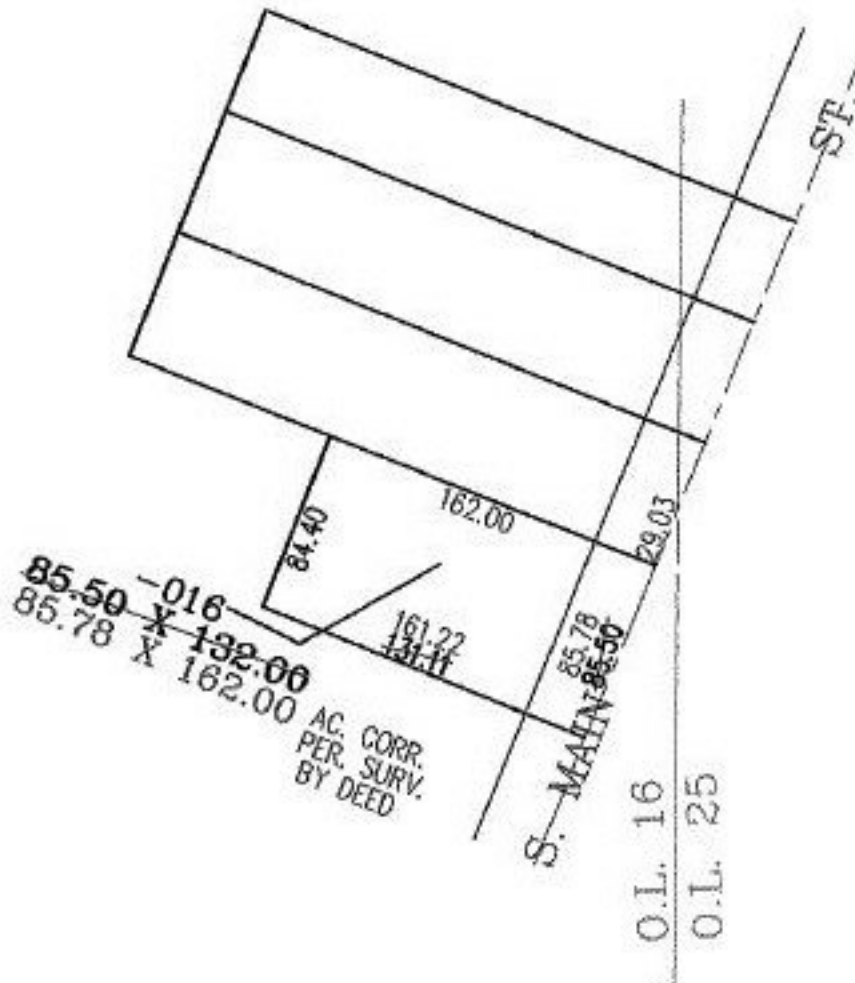
CHILD PARCEL:

STARTING POINT: INTERSECTION OF C/L OF S. MAIN ST. AND EAST LINE OF O.L. 16

NO. 00685-D



# FRONTAGE AND DEPTH CORR.



## SPLITS/DEEDS PROCESSED

LORAIN COUNTY TAX MAP DEPARTMENT  
226 MIDDLE AVE. ELYRIA, OHIO

SURVEYED BY: DEED

CLOSURE: 02:10.000

MAP PAGE(S): 5-00-016-B

APPROVED BY: RRM DATE: 6-25-02

SCALE: 1" = 100' PRIOR INSTRUMENT: DV 1165/124