

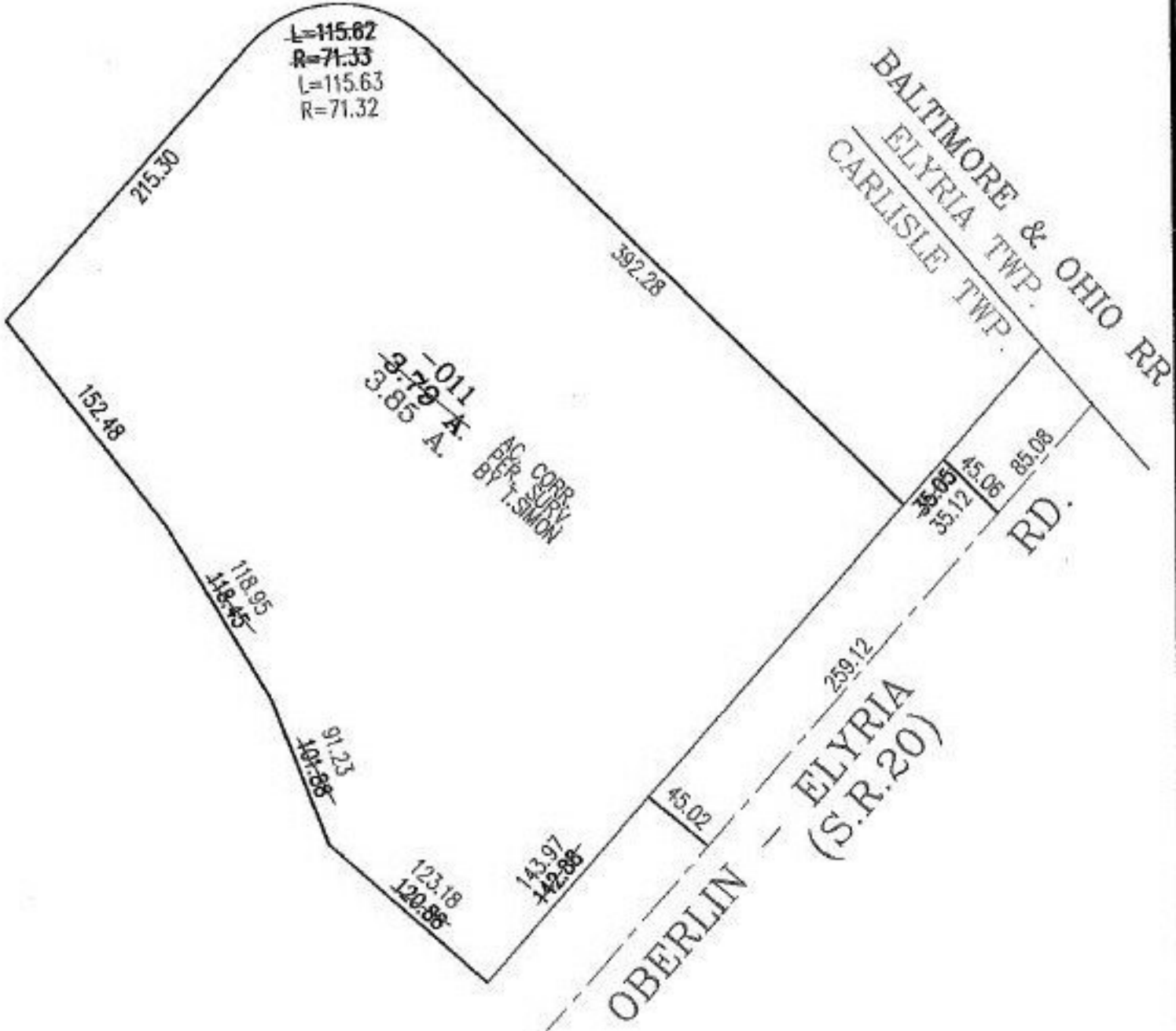
RASTER

PARENT PARCEL: 10-00-003-112-011

NO. 00671-A

CHILD PARCEL:

STARTING POINT: INTERSECTION OF C/L OF S.R. 20 AND THE CORP LINE OF ELYRIA



**SPLITS/DEEDS PROCESSED**

LORAIN COUNTY TAX MAP DEPARTMENT  
226 MIDDLE AVE. ELYRIA, OHIO

SURVEYED BY: THOMAS A. SIMON  
 CLOSURE: 01:10.000  
 MAP PAGE(S): 10-00-003-B  
 APPROVED BY: RRM DATE: 3-11-02  
 SCALE: 1" = 100' PRIOR INSTRUMENT: