

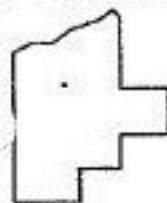
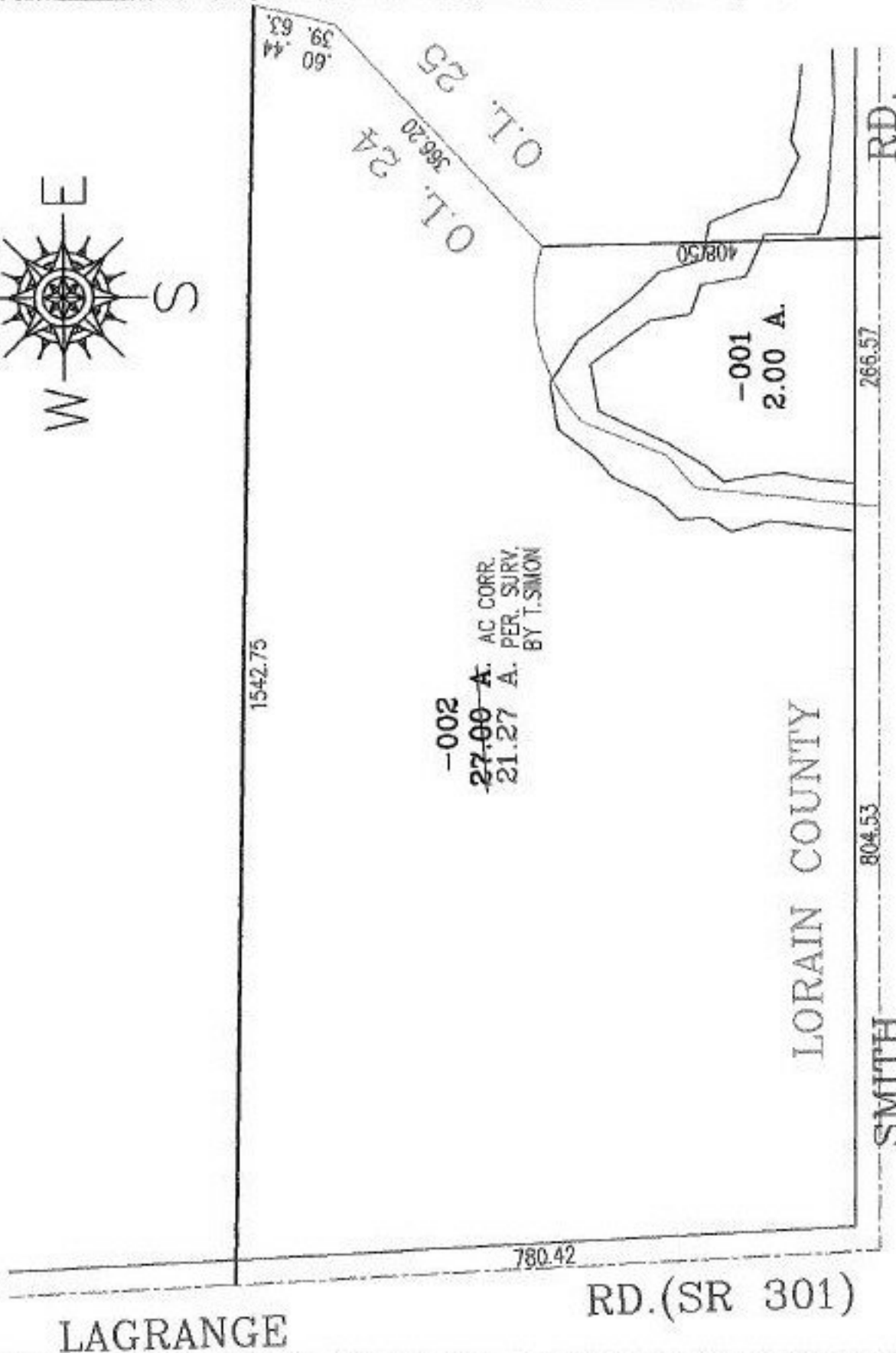
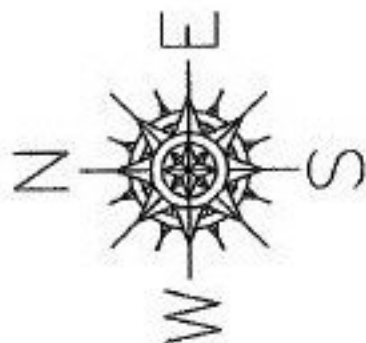
RASTER

PARENT PARCEL: 19-01-024-000-002

CHILD PARCEL:

STARTING POINT: INTERSECTION OF C/L OF SMITH RD. AND C/L OF LAGRANGE RD.(SR301)

NO. 00667 X



**SPLITS/DEEDS PROCESSED**  
**LORAIN COUNTY TAX MAP DEPARTMENT**  
 226 MIDDLE AVE. ELYRIA, OHIO

SURVEYED BY: THOMAS A. SIMON  
 CLOSURE: .01:10.000  
 MAP PAGE(S): 19-F  
 APPROVED BY: RRM DATE: 4-19-02  
 SCALE: 1" = 200' PRIOR INSTRUMENT: 20000670193