

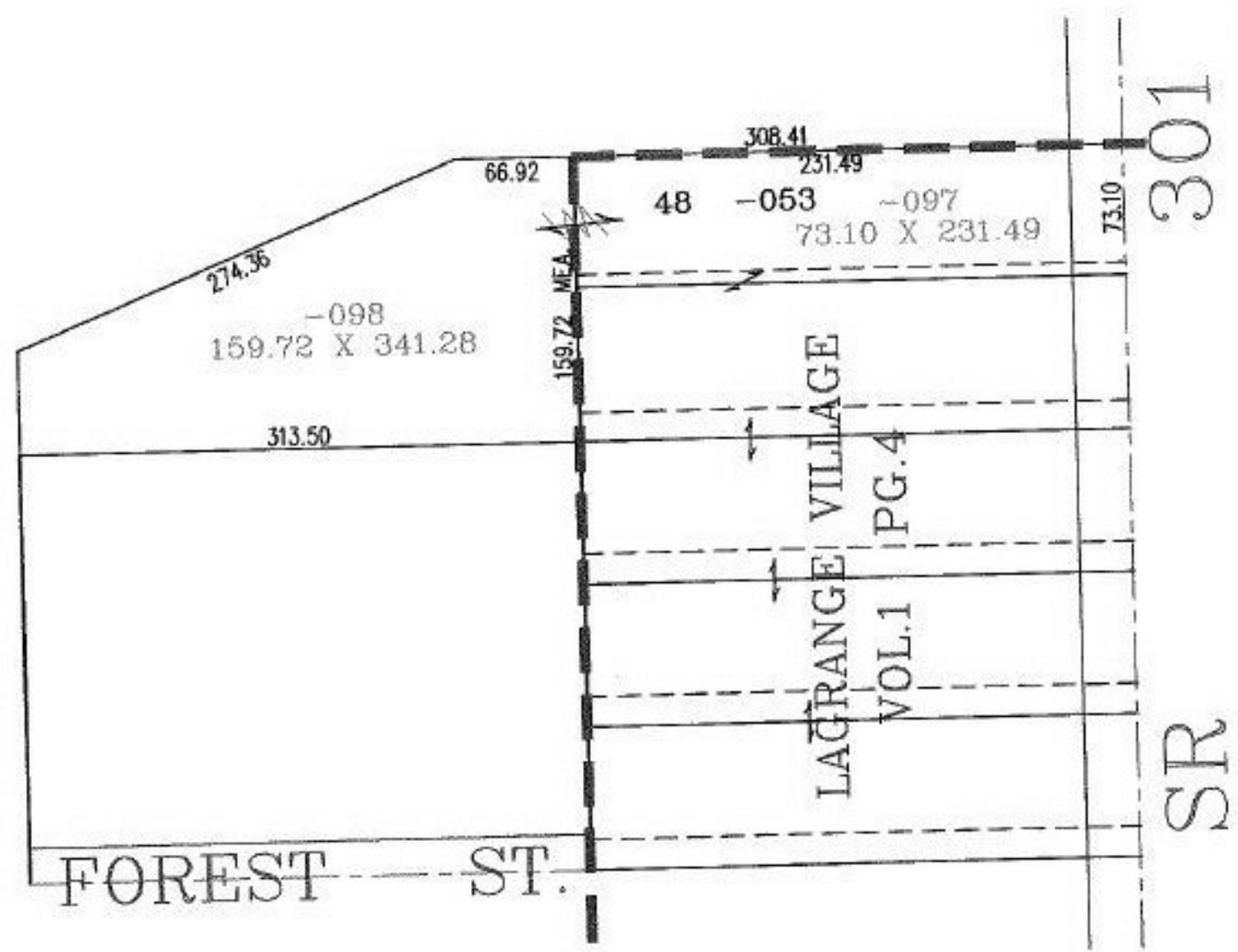
RASTER

PARENT PARCEL: 15-00-045-101-053  
CHILD PARCEL: 15-00-045-101-097, -098  
STARTING POINT: NORTHWEST CORNER OF S/L 46 OF LAGRANGE VILLAGE

NO. 00640-A



UNCOMBINATION



SPLITS/DEEDS PROCESSED  
LORAIN COUNTY TAX MAP DEPARTMENT  
226 MIDDLE AVE. ELYRIA, OHIO

SURVEYED BY: DEED  
CLOSURE: CAN'T RUN  
MAP PAGE(S): 15-00-045-B  
APPROVED BY: BRM DATE: 12-27-01  
SCALE: 1" = 100' PRIOR INSTRUMENT: OR 881/421