

RASTER

PARENT PARCEL: 16-00-025-101-012

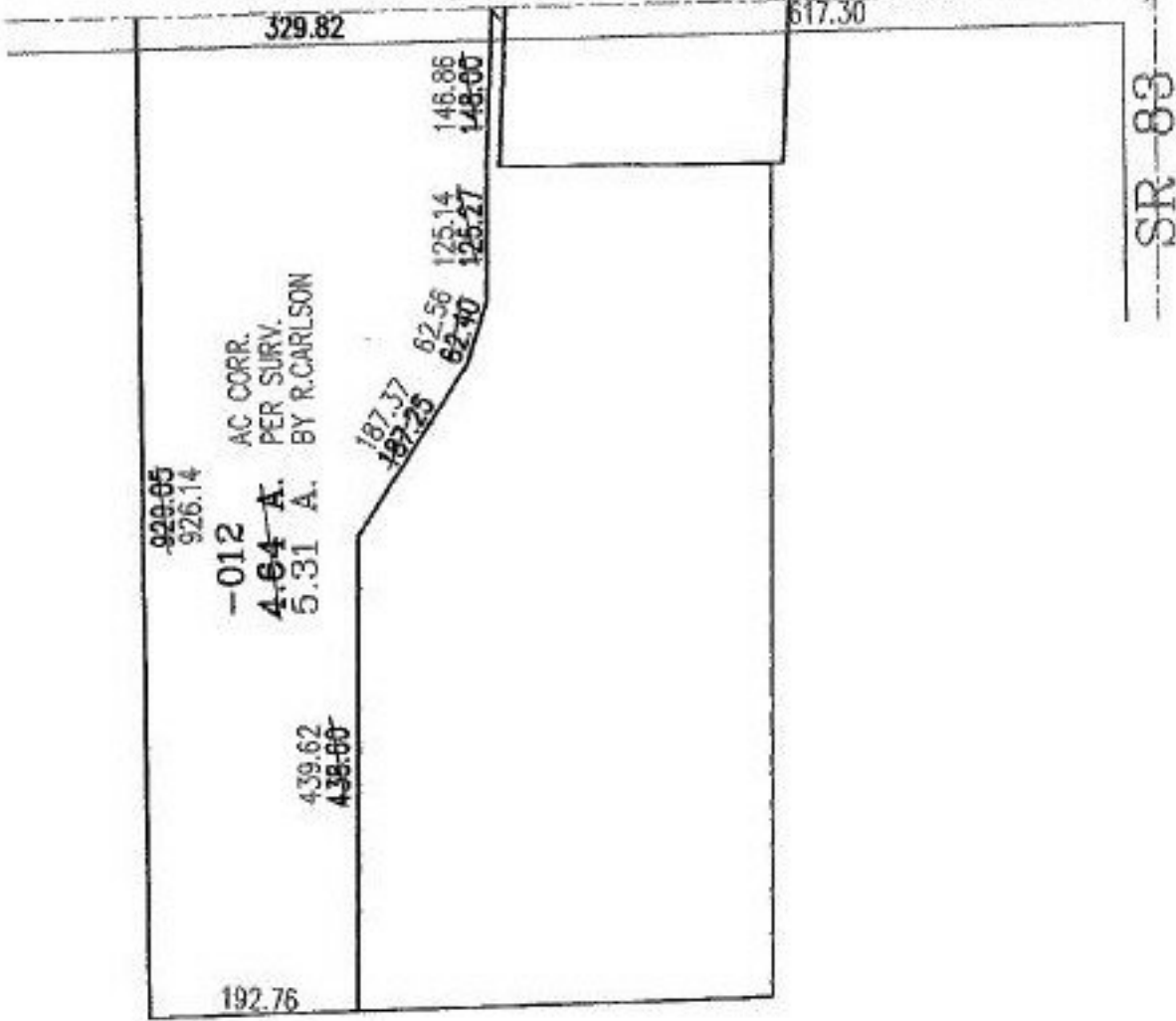
CHILD PARCEL:

STARTING POINT: INTERSECTION OF C/L OF SR 57 AND C/L SR 83

NO. 00639-A



MEDINA-ELYRIA(SR 57) RD.



SPLITS/DEEDS PROCESSED
LORAIN COUNTY TAX MAP DEPARTMENT
 226 MIDDLE AVE. ELYRIA, OHIO

SURVEYED BY: R. CARLSON
 CLOSURE: 00:10.000
 MAP PAGE(S): 16-00-025-B
 APPROVED BY: RRM DATE: 1-10-02
 SCALE: 1" = 200' PRIOR INSTRUMENT: 980542229