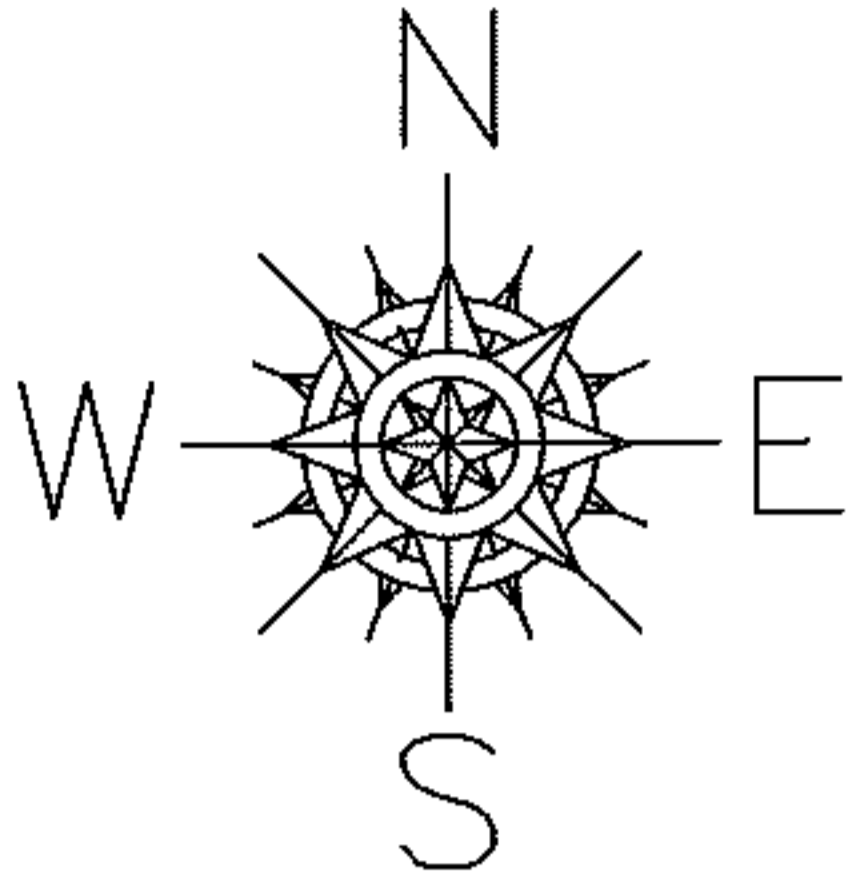


PARENT PARCEL: 03-00-012-000-024 & -026

CHILD PARCEL: 03-00-012-900-006

STARTING POINT: STATION 104 PLUS 98

10-01997-C



ACREAGE CORRECTION

03-00-012-000-024

~~1.24 A.~~

1.21 A.

COMBINATION

~~03-00-012-000-024~~

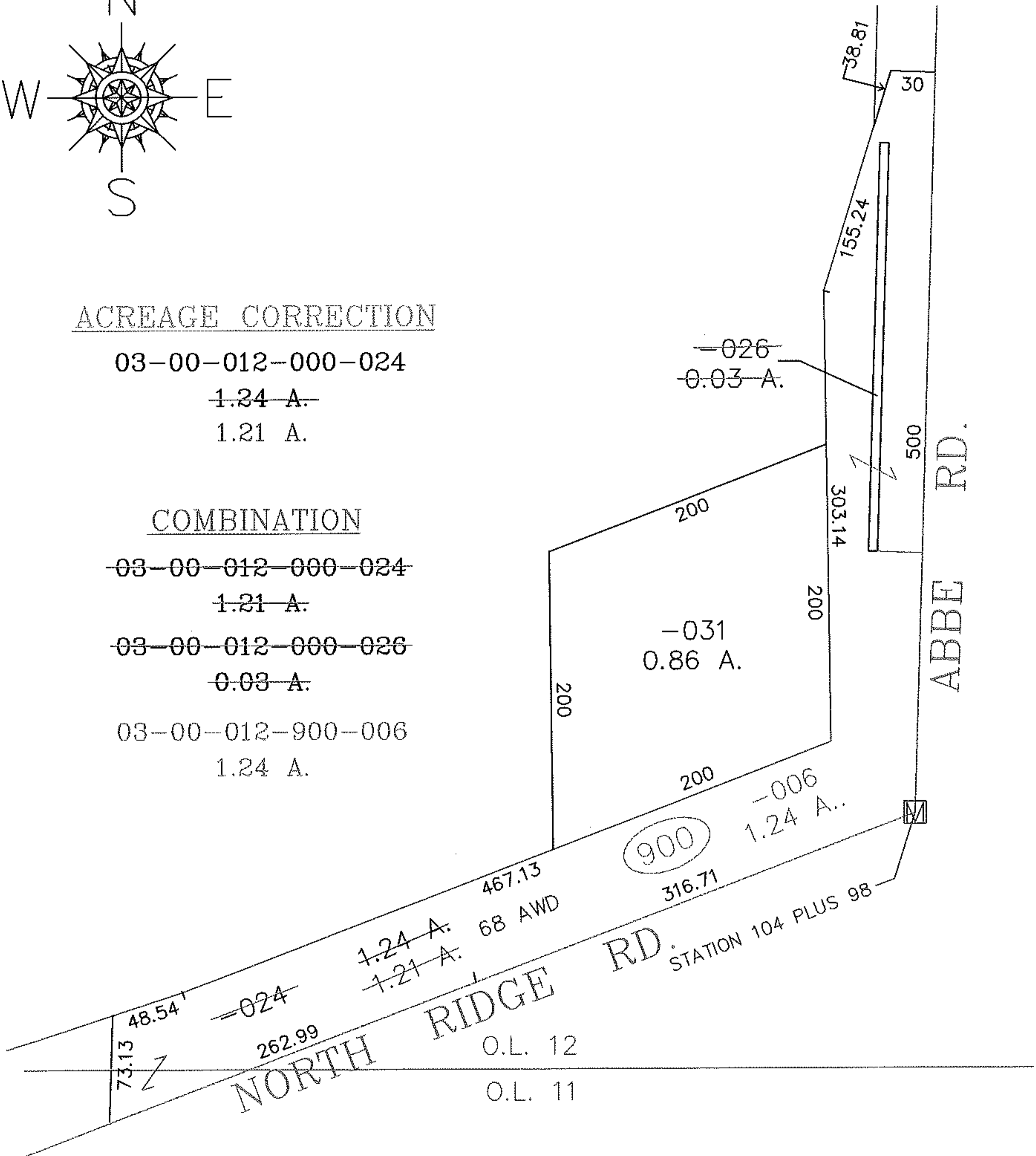
~~1.21 A.~~

~~03-00-012-000-026~~

~~0.03 A.~~

03-00-012-900-006

1.24 A.



SPLITS/DEEDS PROCESSED

LORAIN COUNTY TAX MAP DEPARTMENT  
226 MIDDLE AVE. ELYRIA, OHIO

SURVEYED BY: DV 932/814 STATE OF OHIO

CLOSURE: 18.08 : 10.000

MAP PAGE(S): 03-00-012-B

APPROVED BY: TJS DATE: 4/1/10

SCALE: 1" = 100 PRIOR INSTRUMENT: DV 852/585

RASTER