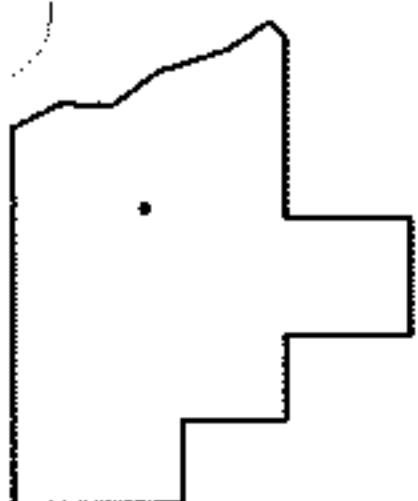
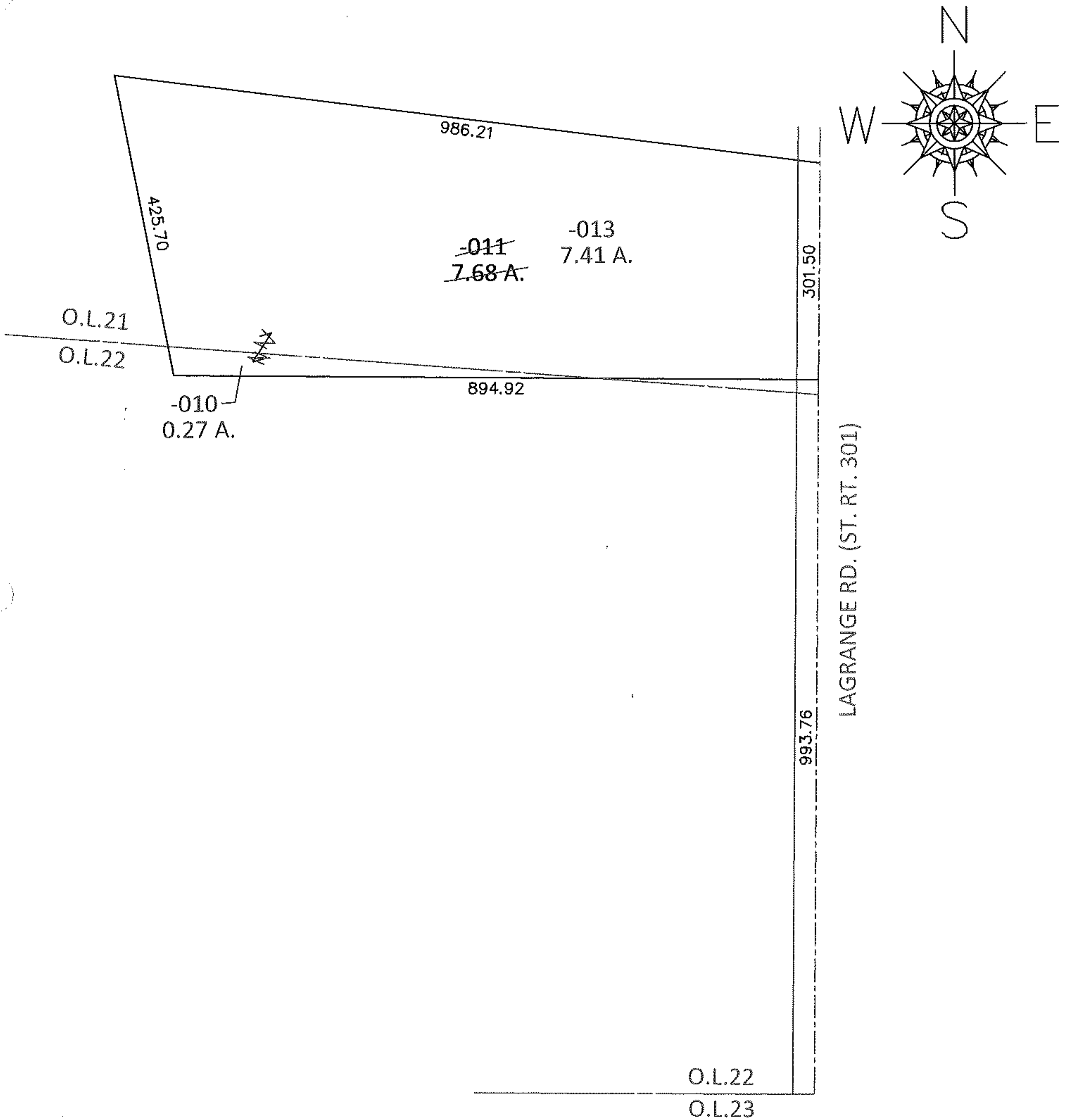


PARENT PARCEL: 19-01-021-000-011

CHILD PARCEL: 19-01-021-000-013, 19-01-022-000-010

10-01995-C

STARTING POINT: INTERSECTION OF SOUTH LINE OF O.L.22 AND C/L OF LAGRANGE RD.



**SPLITS/DEEDS PROCESSED**

LORAIN COUNTY TAX MAP DEPARTMENT  
226 MIDDLE AVE. ELYRIA, OHIO

SURVEYED BY: THOMAS A. SIMON

CLOSURE: .00:10,000

MAP PAGE(S): 19-F

APPROVED BY: RRM DATE: 3-26-10

SCALE: 1"= 200 PRIOR INST.: 20020801337

*RASTER*