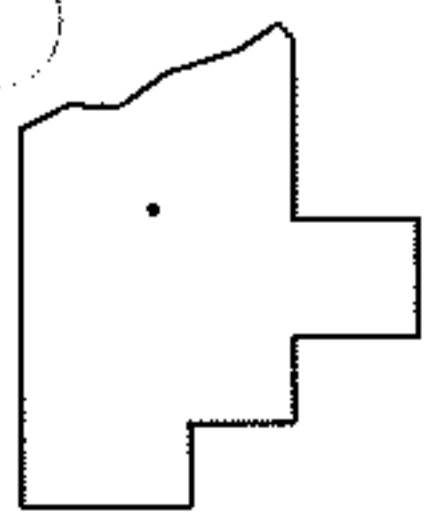
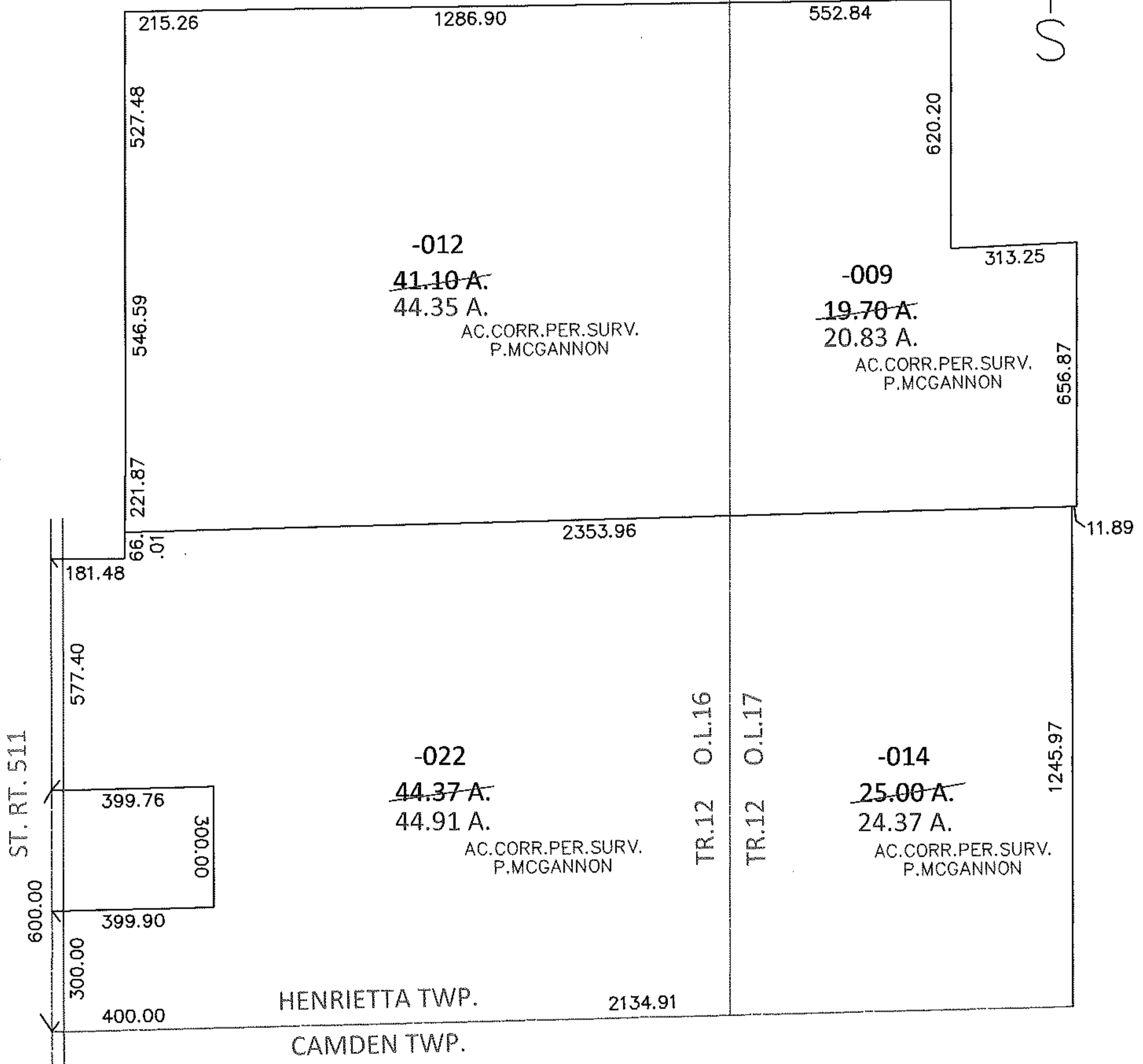
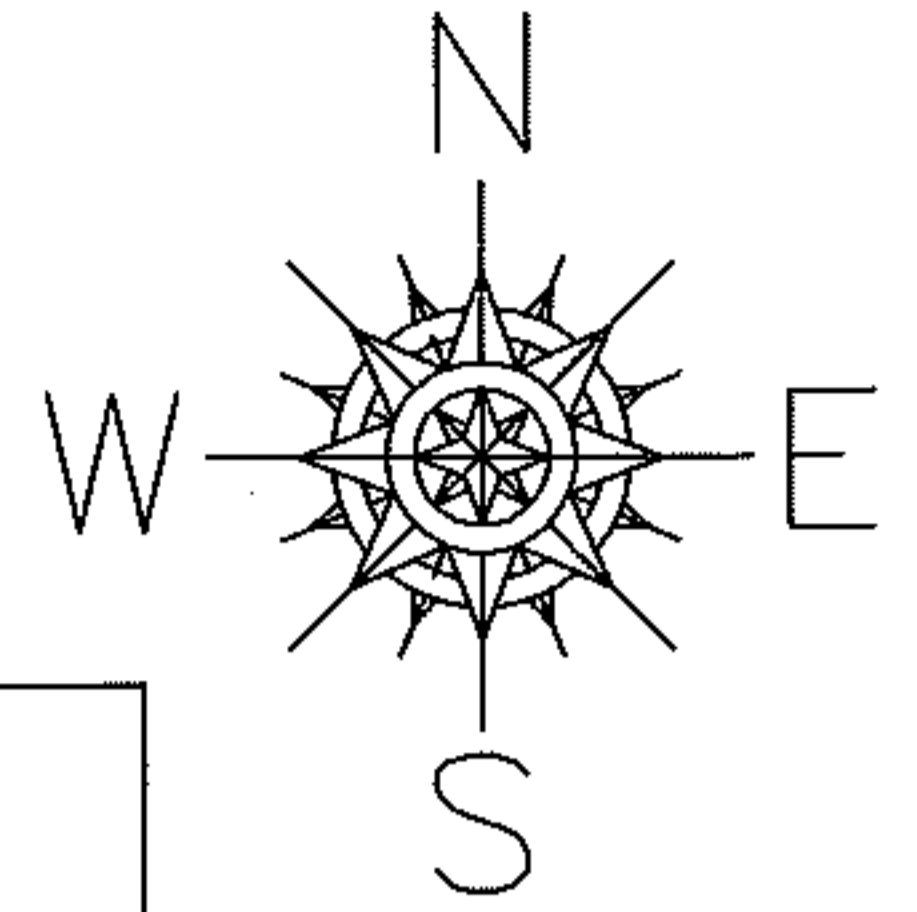


PARENT PARCEL: 08-12-016-000-012, -022, 08-12-017-000-009, -014

10-01989-A

CHILD PARCEL:

STARTING POINT: INTERSECTION OF C/L OF ST. RT. 511 AND SOUTH LINE OF HENRIETTA



SPLITS/DEEDS PROCESSED

LORAIN COUNTY TAX MAP DEPARTMENT
226 MIDDLE AVE. ELYRIA, OHIO

SURVEYED BY: PATRICK A. MCGANNON

CLOSURE: .06:10,000

MAP PAGE(S): 8-G

APPROVED BY: RRM DATE: 3-22-10

SCALE: 1"= 400 PRIOR INST.: 20090287505

RASPER