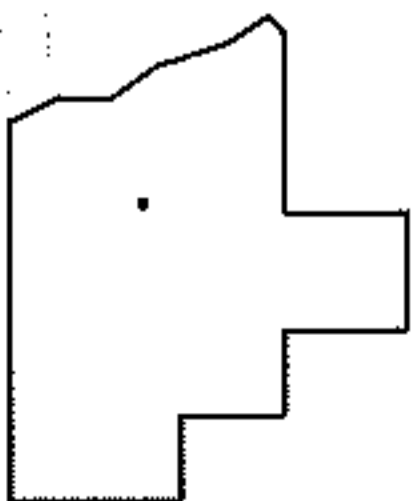
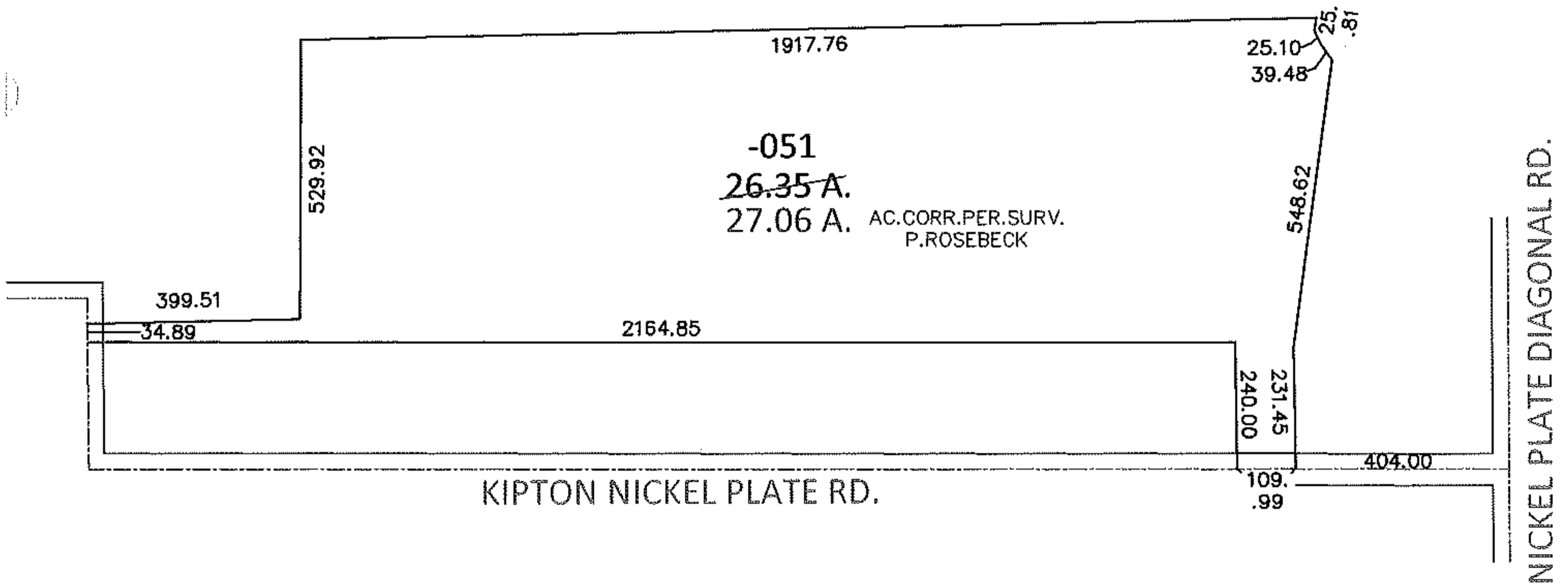
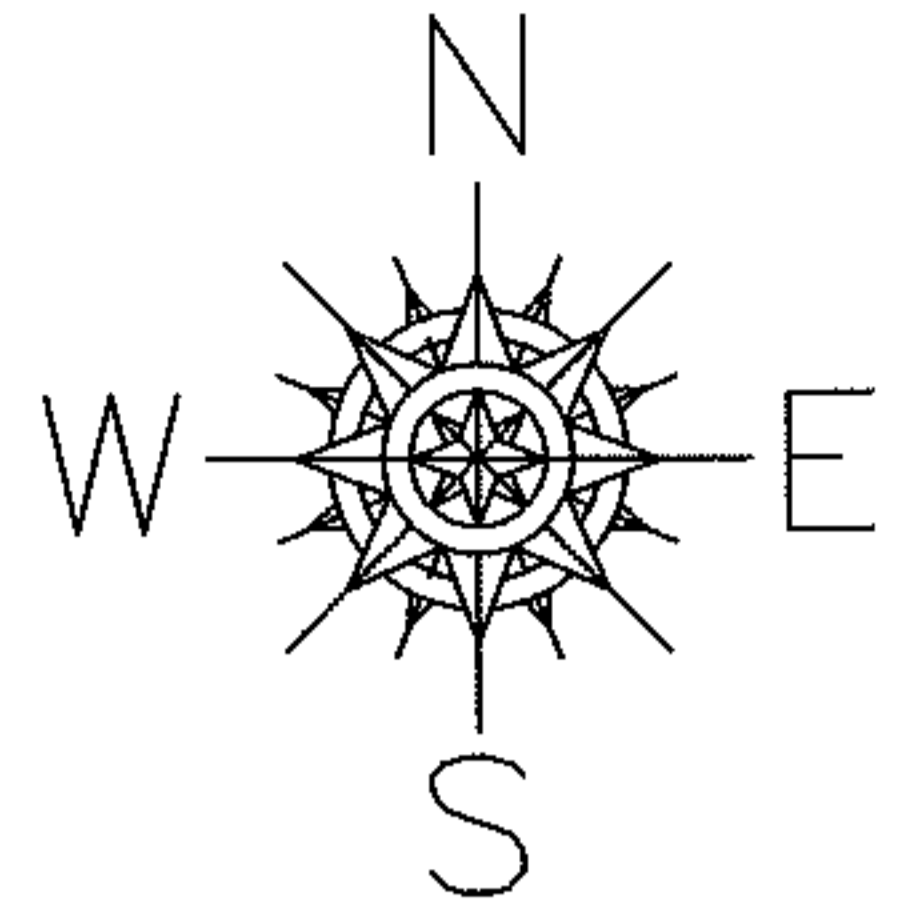


PARENT PARCEL: 15-00-020-000-051

CHILD PARCEL:

10-01986-C

STARTING POINT: INTERSECTION OF C/L OF NICKEL PLATE DIAGONAL RD. AND C/L OF
KIPTON NICKEL PLATE RD.



SPLITS/DEEDS PROCESSED

LORAIN COUNTY TAX MAP DEPARTMENT
226 MIDDLE AVE. ELYRIA, OHIO

SURVEYED BY: PHILLIP A. ROSEBECK

CLOSURE: .00:10,000

MAP PAGE(S): 15-00-020-A

APPROVED BY: RRM DATE: 3-17-10

SCALE: 1" = 400 PRIOR INST.: 20030914013