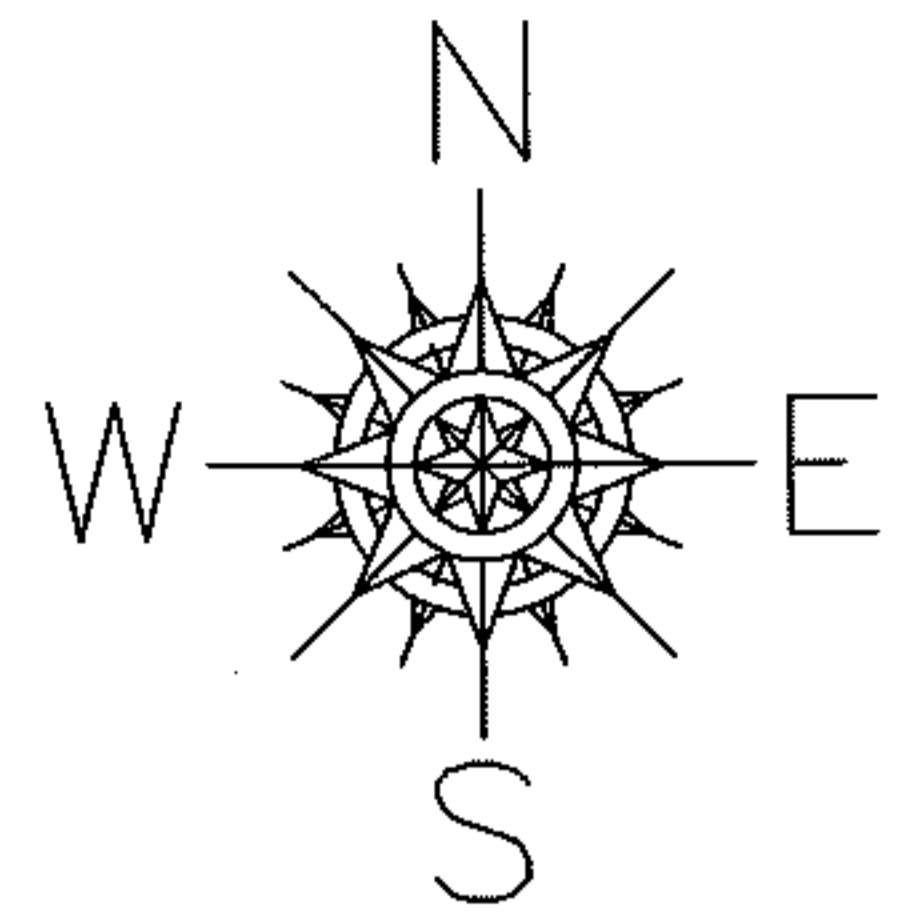


PARENT PARCEL: 03-00-079-111-009, -010

CHILD PARCEL: 03-00-079-111-020

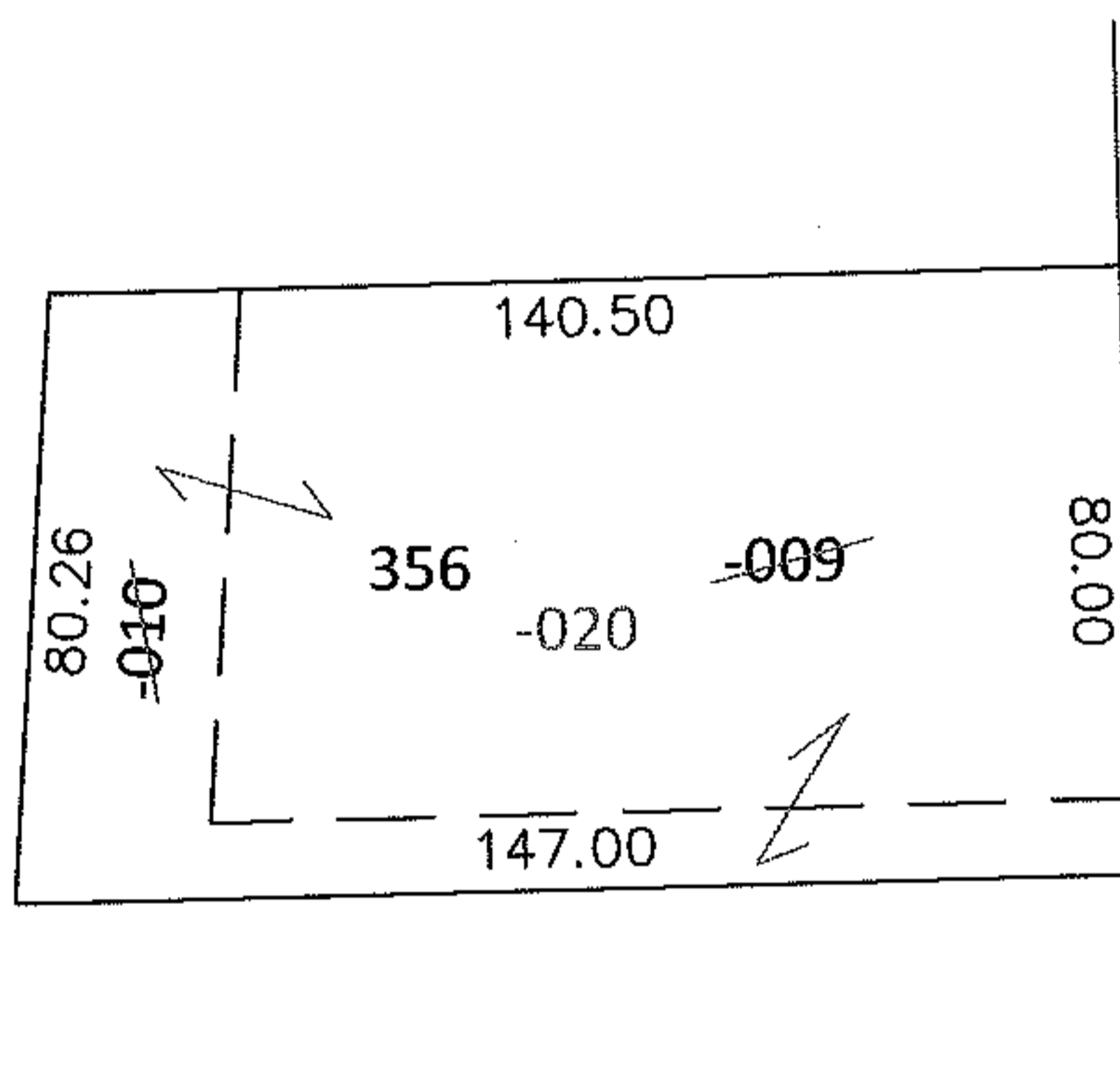
STARTING POINT: S/L 356 IN HOMEWOOD ADD. VOL.14 PGS.22-23

10-01985-C

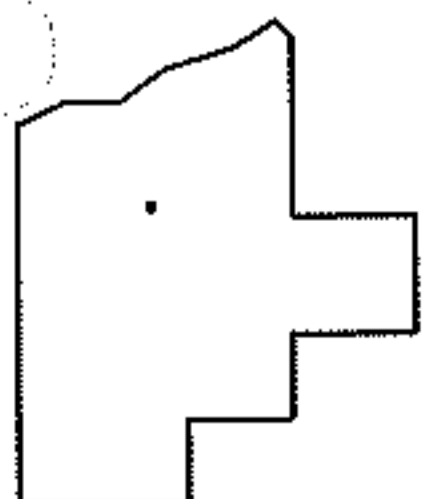


COMBINATION

PER CASE NO.09CV162013
AND INST. 20060164717



TACOMA AVE.



SPLITS/DEEDS PROCESSED

LORAIN COUNTY TAX MAP DEPARTMENT
226 MIDDLE AVE. ELYRIA, OHIO

SURVEYED BY: N/A

CLOSURE: N/A

MAP PAGE(S): 3-00-079-A

APPROVED BY: RRM DATE: 3-16-10

SCALE: 1"= 50 PRIOR INST.: 20060164717