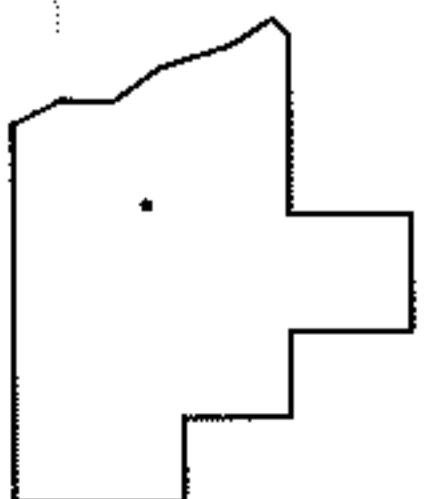
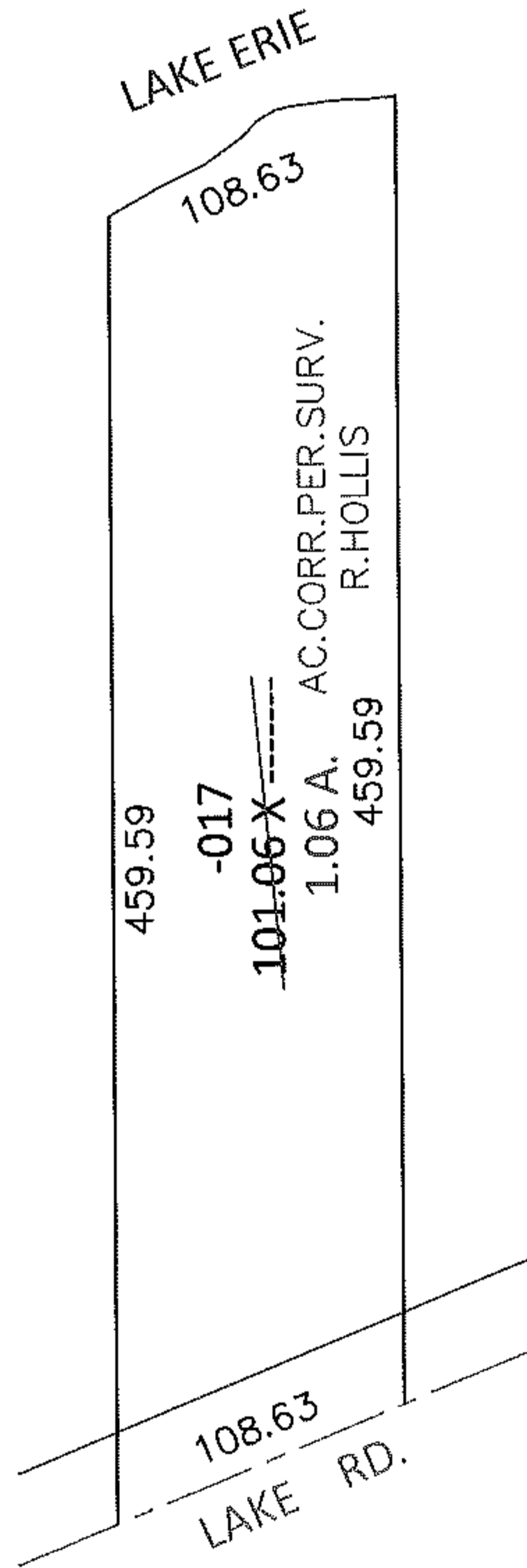
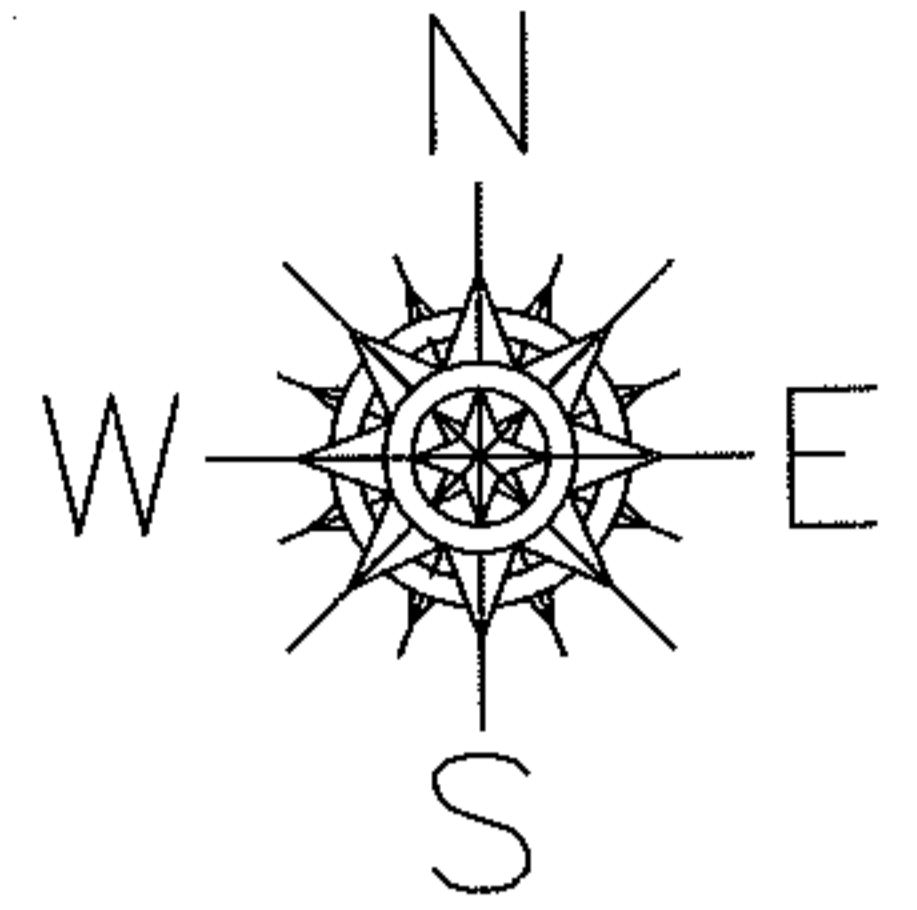


PARENT PARCEL: 04-00-007-104-017

CHILD PARCEL: \_\_\_\_\_

10-01979-A

STARTING POINT: SOUTHEAST CORNER OF LAND CONVEYED TO WILLIAM C. DIETERICH  
(2001)



**SPLITS/DEEDS PROCESSED**

LORAIN COUNTY TAX MAP DEPARTMENT  
226 MIDDLE AVE. ELYRIA, OHIO

SURVEYED BY: RAY E. HOLLIS

CLOSURE: N/A

MAP PAGE(S): 4-00-007-A

APPROVED BY: RRM DATE: 3-3-10

SCALE: 1" = 100 PRIOR INST.: 2001729773