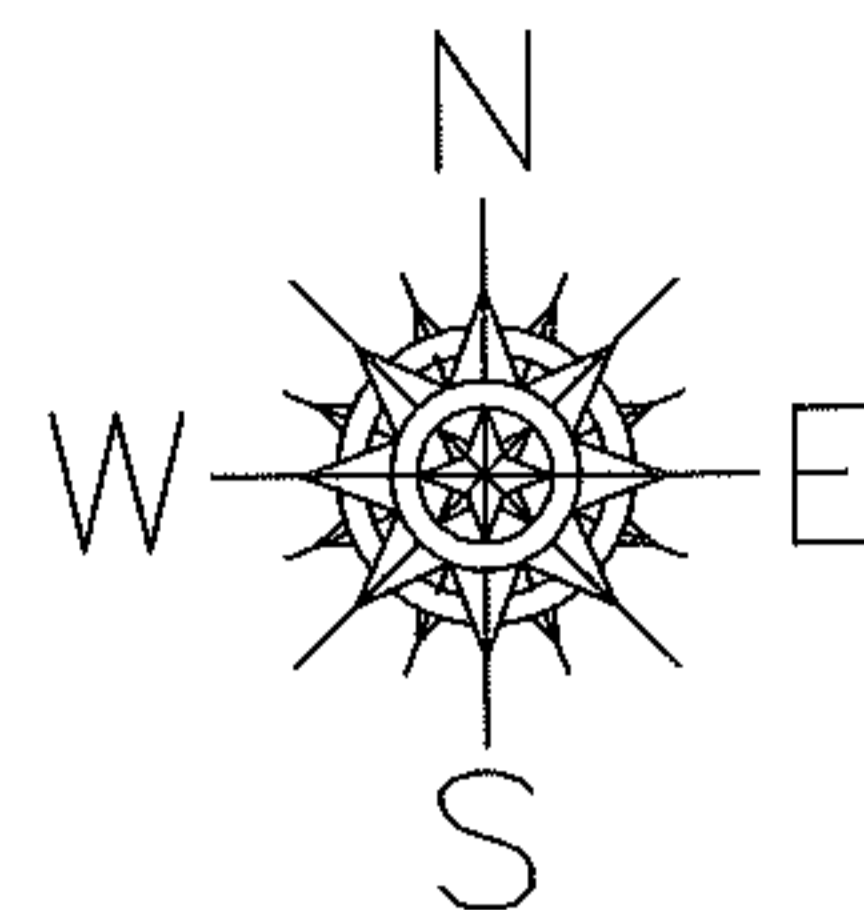


PARENT PARCEL: 14-00-044-000-001

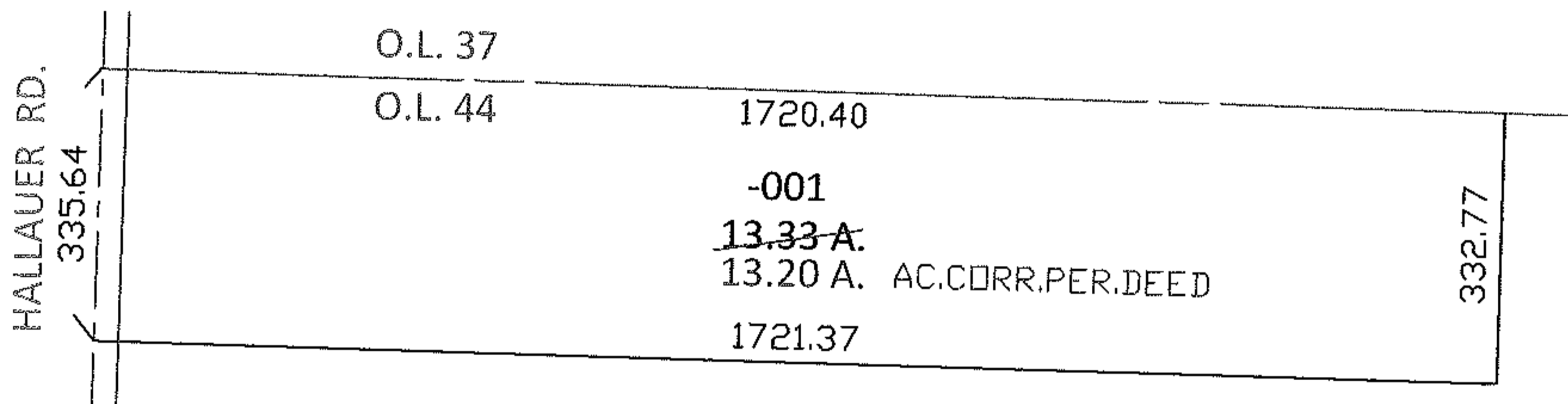
CHILD PARCEL: _____

STARTING POINT: XXXXXX

10-01977-A



REMOVE UPDATE LEGAL



SPLITS/DEEDS PROCESSED

LORAIN COUNTY TAX MAP DEPARTMENT
226 MIDDLE AVE. ELYRIA, OHIO

SURVEYED BY: N/A

CLOSURE: .01,10,000

MAP PAGE(S): 14-C

APPROVED BY: RRM DATE: 3-1-10

SCALE: 1"= 300 PRIOR INST.: 20090313410