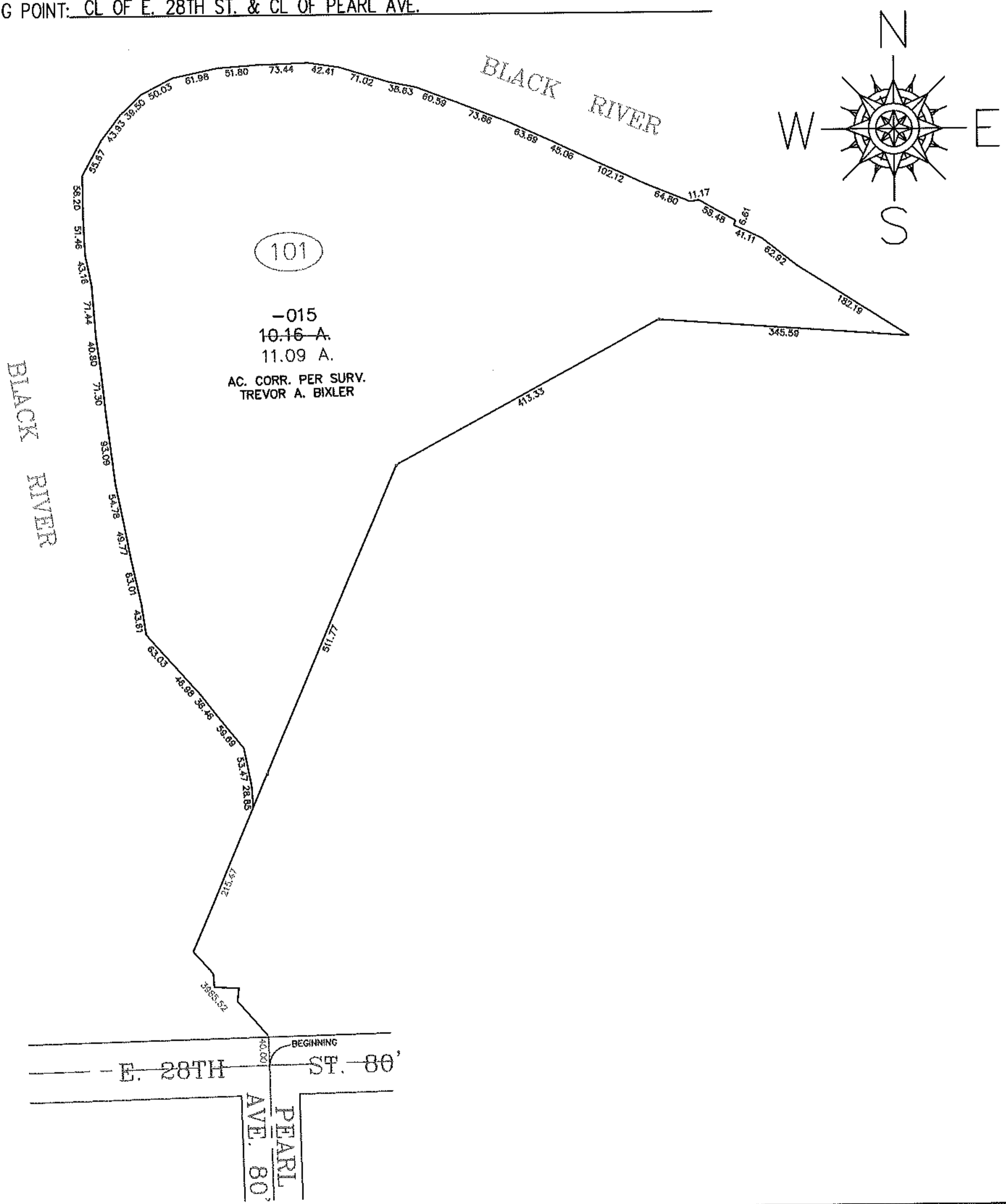


PARENT PARCEL: 03-00-090-101-015

CHILD PARCEL: XX-XX-XXX-XXX-XXX

STARTING POINT: CL OF E. 28TH ST. & CL OF PEARL AVE.

10-01973-A



SPLITS/DEEDS PROCESSED
 LORAIN COUNTY TAX MAP DEPARTMENT
 226 MIDDLE AVE. ELYRIA, OHIO

SURVEYED BY: TREVOR A. BIXLER
 CLOSURE: 1: 165,606
 MAP PAGE(S): 03-00-090-A
 APPROVED BY: IJS DATE: 2/19/10
 SCALE: 1" = 200' PRIOR INSTRUMENT: 20020808532