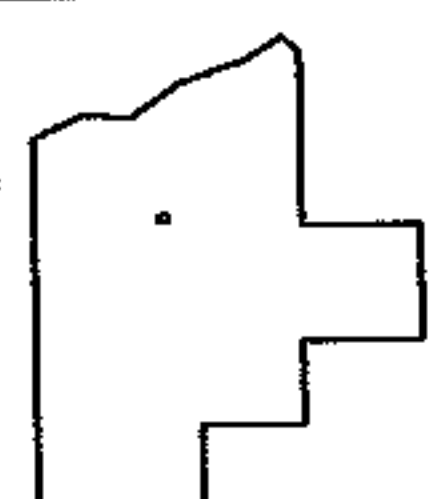
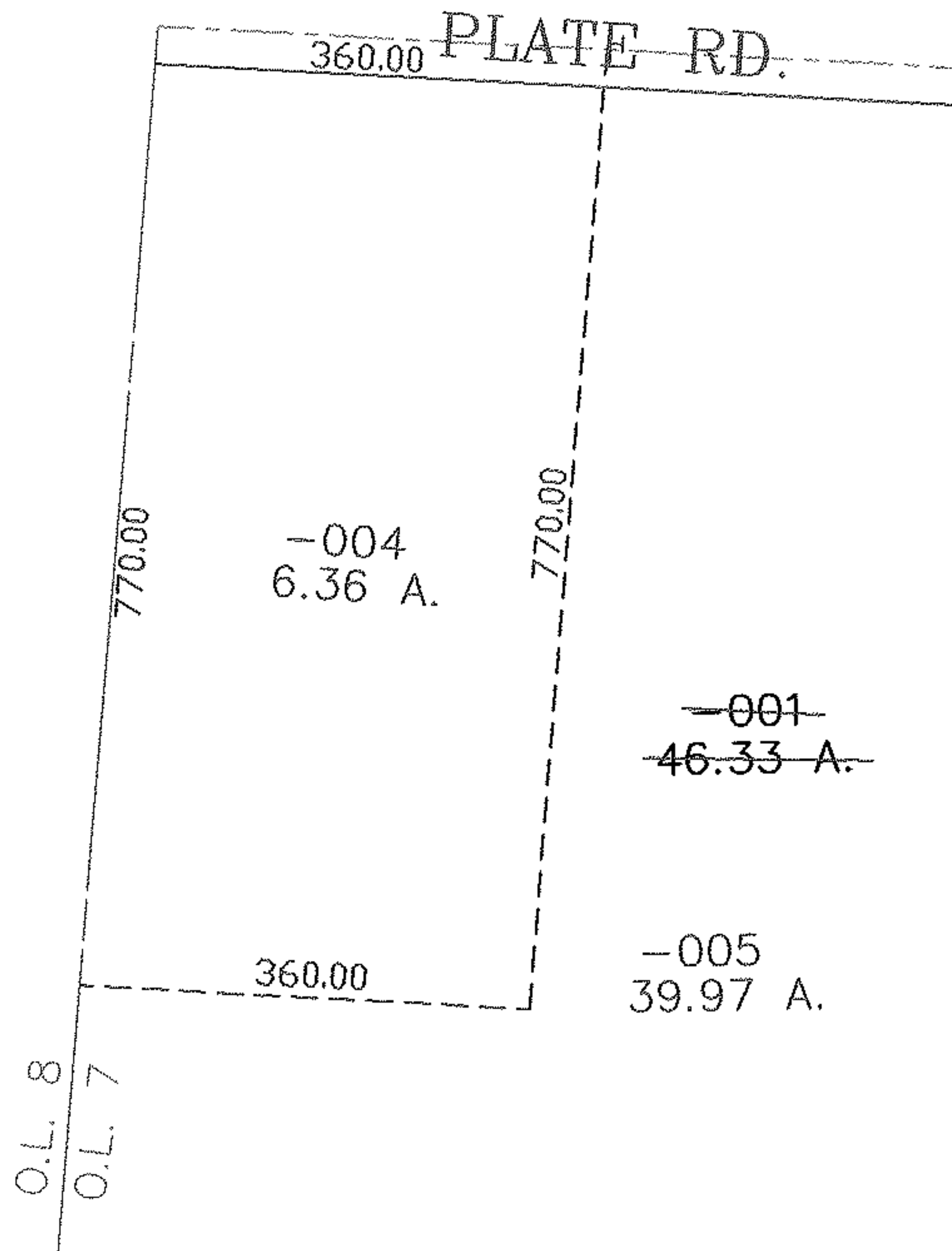
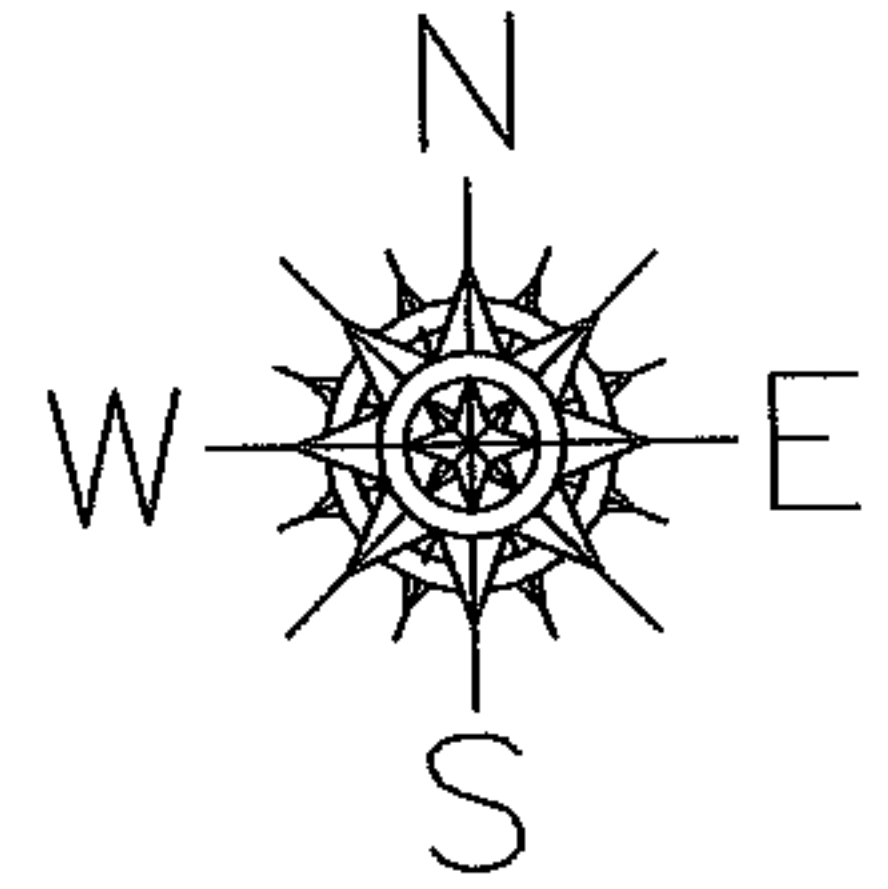


PARENT PARCEL: 13-10-007-000-001

CHILD PARCEL: 13-10-007-000-004, -005

STARTING POINT: CENTERLINE OF PLATE RD. & O.L. 7

NO. 01971



SPLITS/DEEDS PROCESSED
LORAIN COUNTY TAX MAP DEPARTMENT
226 MIDDLE AVE. ELYRIA, OHIO

SURVEYED BY: RICHARD D. CARLSON
 CLOSURE: 0.00 : 10.000
 MAP PAGE(S): 13-10-007-A
 APPROVED BY: JAH DATE: 8-4-05
 SCALE: 1" = 200 PRIOR INSTRUMENT: 20030920569