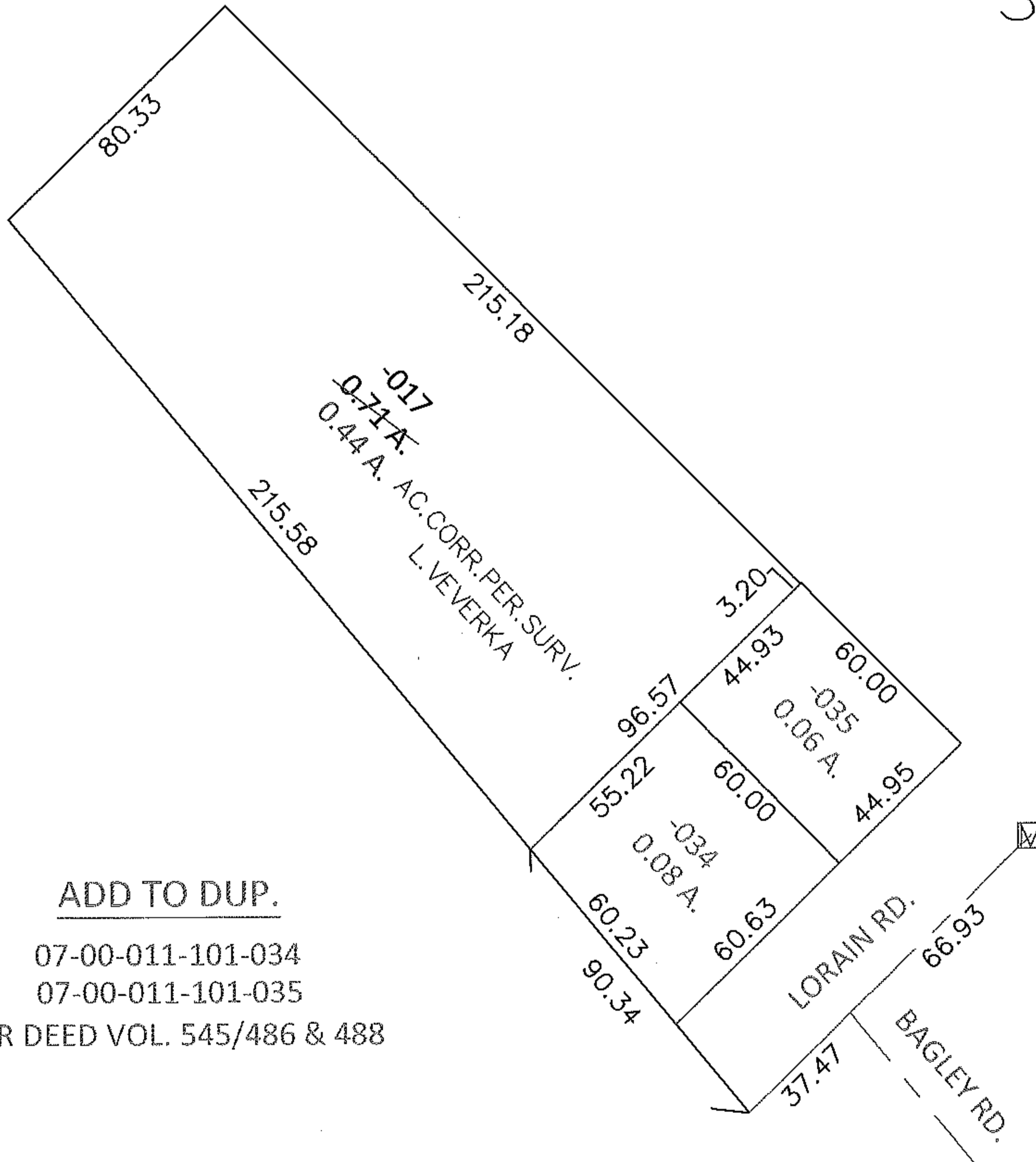
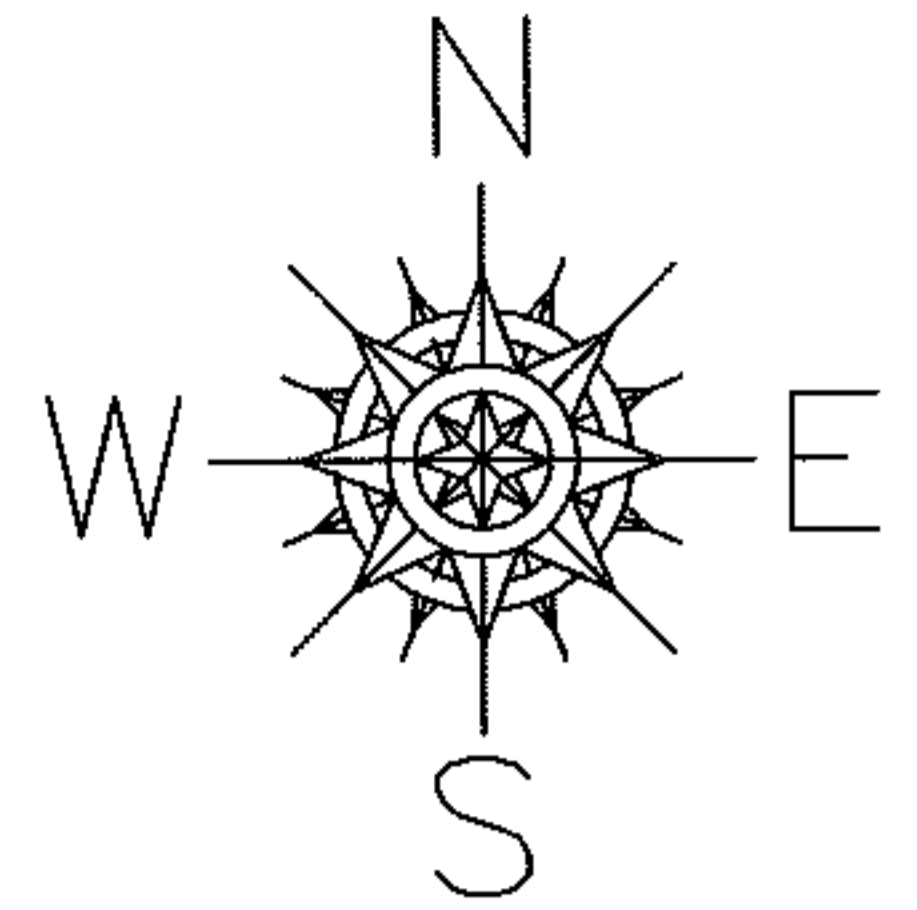


PARENT PARCEL: 07-00-011-101-017

CHILD PARCEL: 07-00-011-101-017, -034, -035

10-01956-C

STARTING POINT: INTERSECTION OF C/L OF LORAIN RD. AND C/L OF BAGLEY RD.

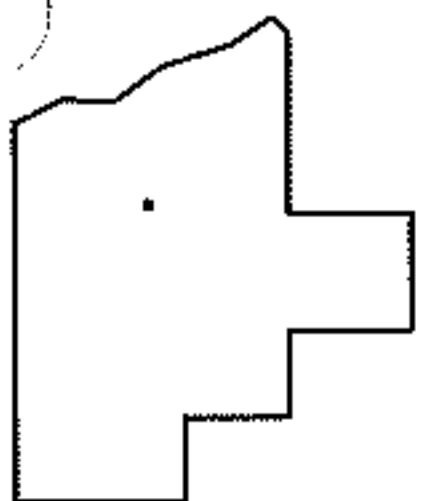


ADD TO DUP.

07-00-011-101-034

07-00-011-101-035

PER DEED VOL. 545/486 & 488



SPLITS/DEEDS PROCESSED

LORAIN COUNTY TAX MAP DEPARTMENT
226 MIDDLE AVE. ELYRIA, OHIO

SURVEYED BY: LOUISE A. VEVERKA

CLOSURE: .01: 10,000

MAP PAGE(S): 07-00-011-A

APPROVED BY: RRM DATE: 2-16-10

SCALE: 1"= 50 PRIOR INST.: 20090314732