

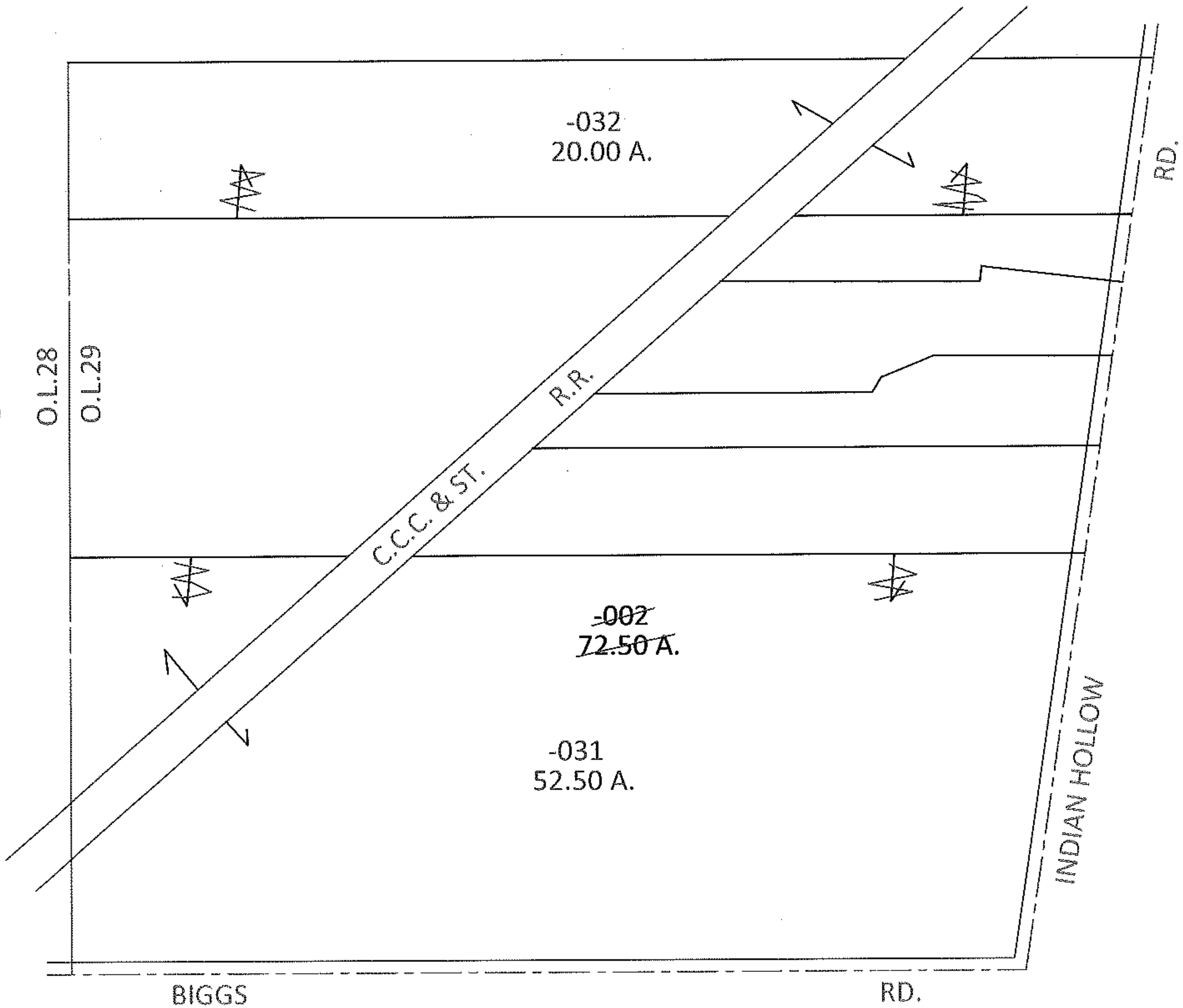
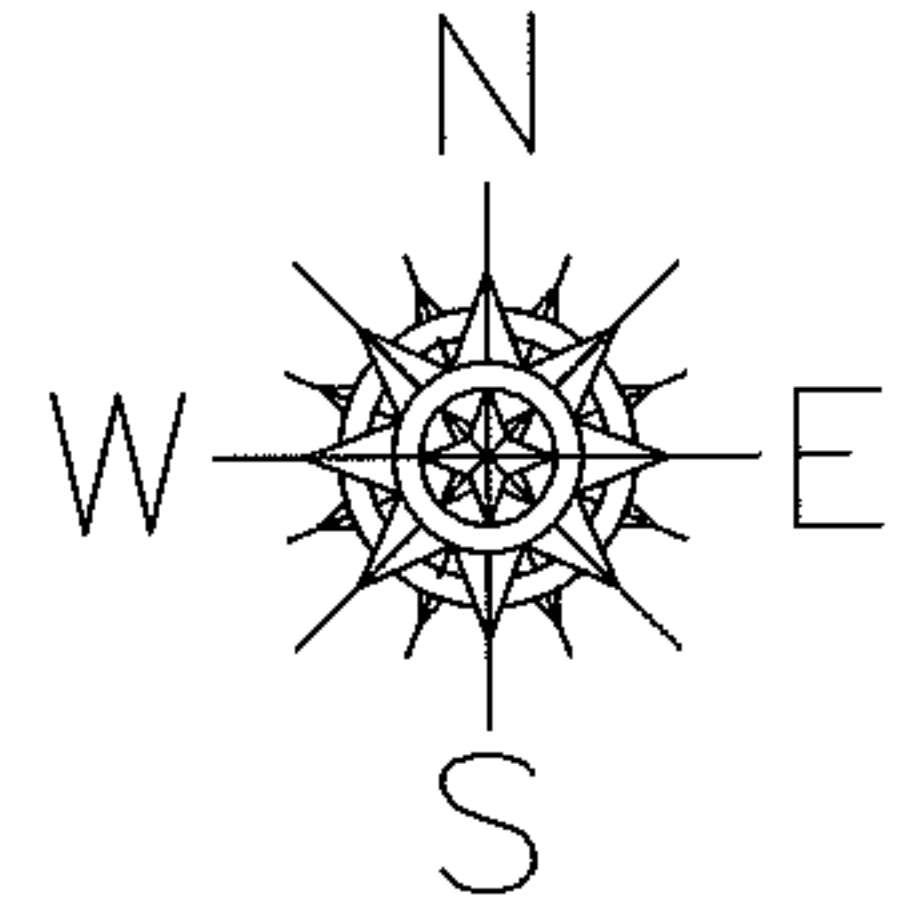
PARENT PARCEL: 15-00-029-000-002

CHILD PARCEL: 15-00-029-000-031, -032

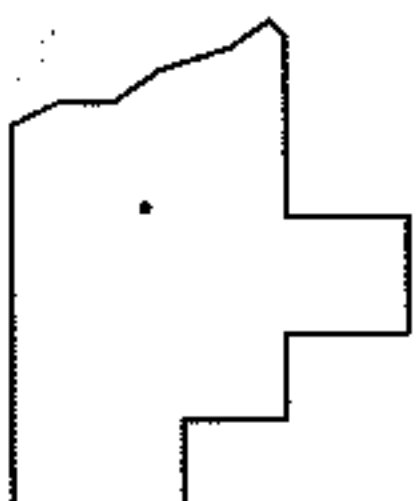
10-01955-D

STARTING POINT: INTERSECTION OF C/L OF INDIAN HOLLOW RD. AND C/L OF BIGGS RD.

UNCOMBINATION  
PER PRIOR DEED OR 1213/316



MAP 3 OF 3



SPLITS/DEEDS PROCESSED

LORAIN COUNTY TAX MAP DEPARTMENT  
226 MIDDLE AVE. ELYRIA, OHIO

SURVEYED BY: N/A

CLOSURE: N/A

MAP PAGE(S): 15-D

APPROVED BY: RRM DATE: 2-8-10

SCALE: 1" = 400 PRIOR INST.: OR 1213/316