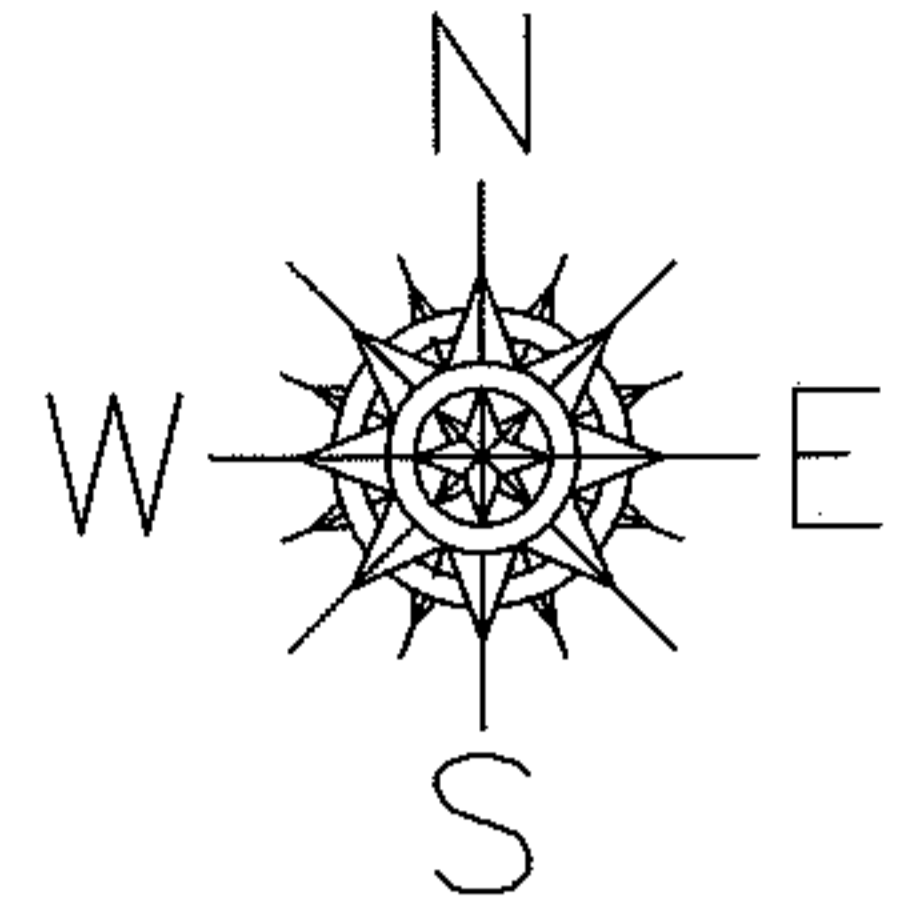


PARENT PARCEL: 10-00-004-132-009, -010

CHILD PARCEL: 10-00-004-132-038

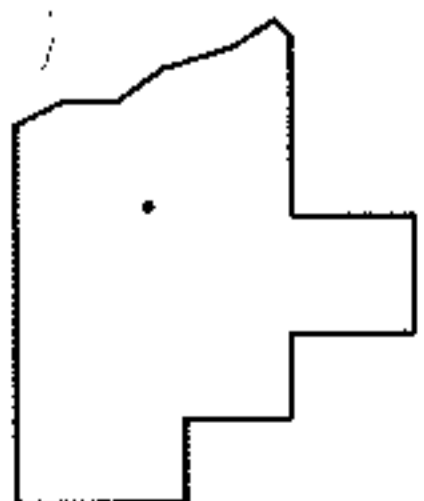
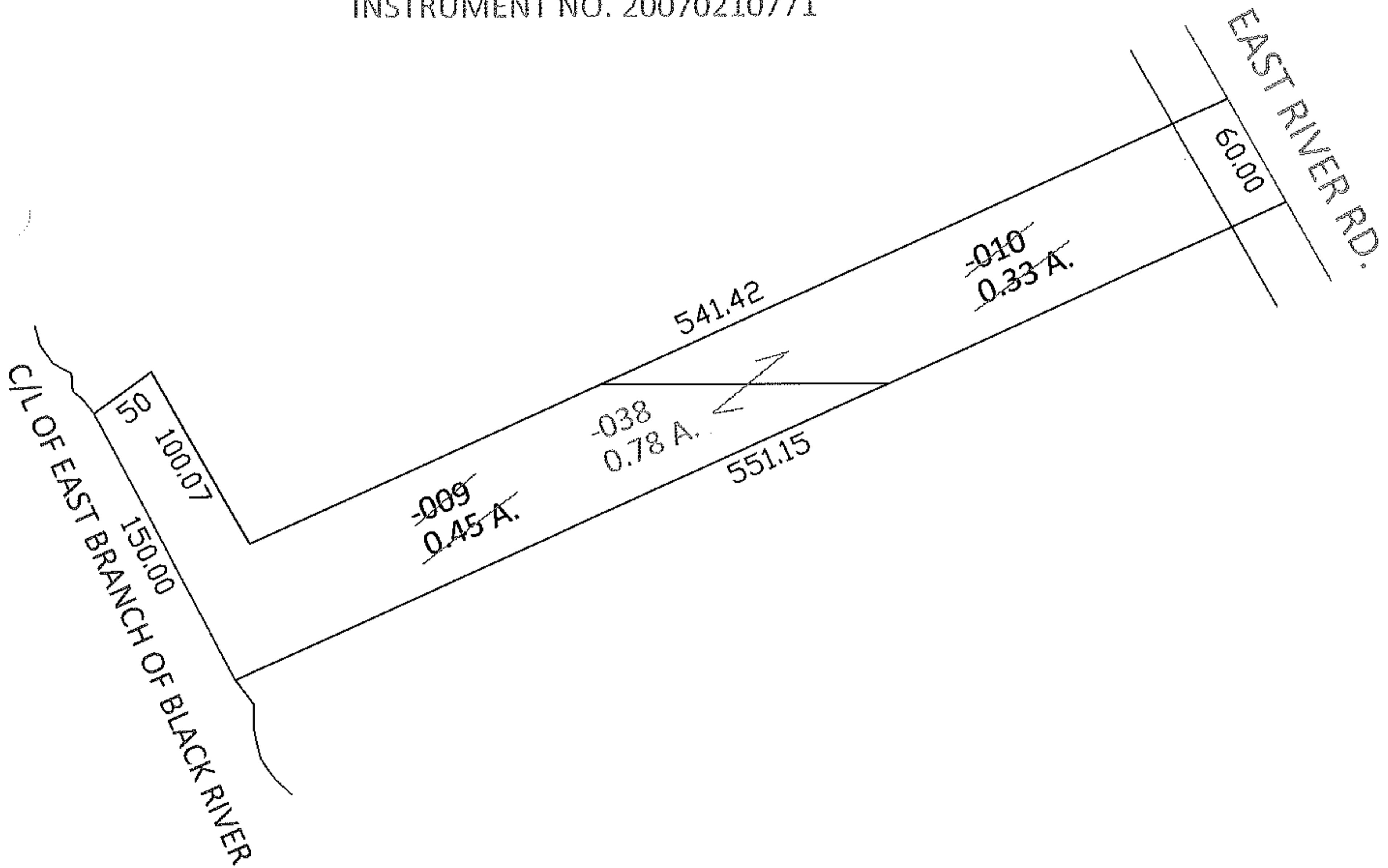
STARTING POINT: XXXXXX

10-01954-D



COMBINATION PER PRIOR DEED

INSTRUMENT NO. 20070210771



SPLITS/DEEDS PROCESSED

LORAIN COUNTY TAX MAP DEPARTMENT  
226 MIDDLE AVE. ELYRIA, OHIO

SURVEYED BY: N/A

CLOSURE: N/A

MAP PAGE(S): 10-00-004-C

APPROVED BY: RRM DATE: 2-2-10

SCALE: 1"= 100 PRIOR INST.: 20070210771