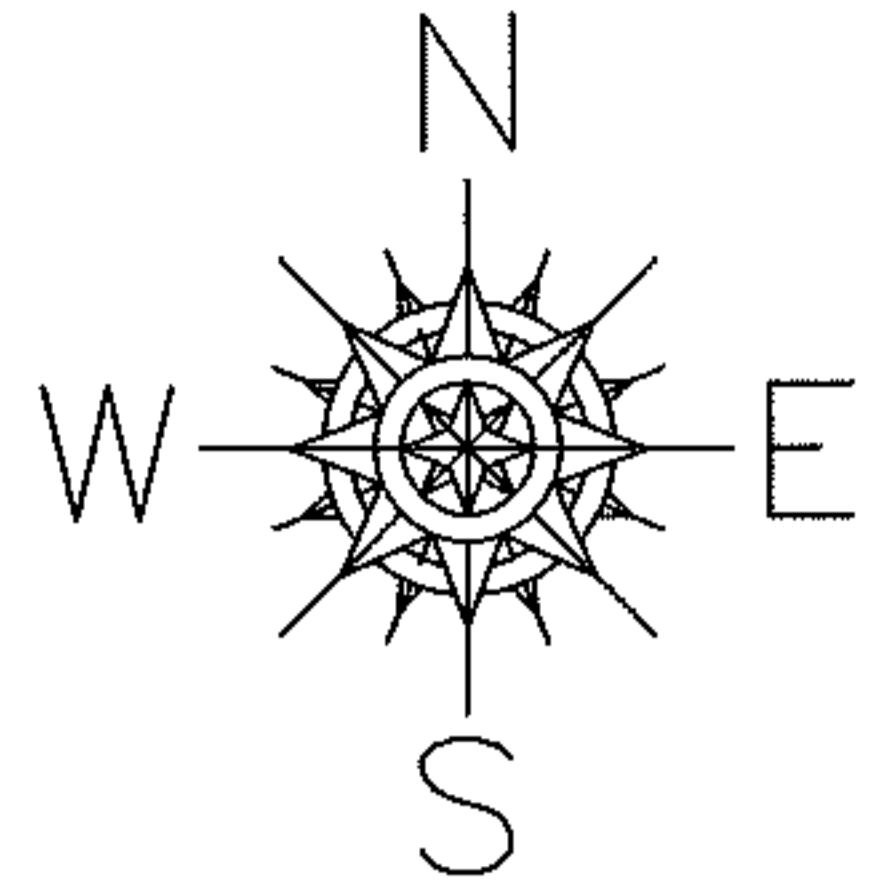


PARENT PARCEL: 10-00-004-101-116

CHILD PARCEL: XX-XX-XXX-XXX-XXX

STARTING POINT: EAST LINE OF MIDDLE AVE. & S.W. CORNER OF E.ADAMS ALLOT. V. 2 PG. 14

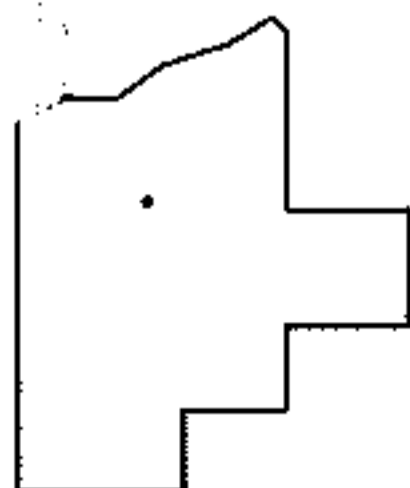
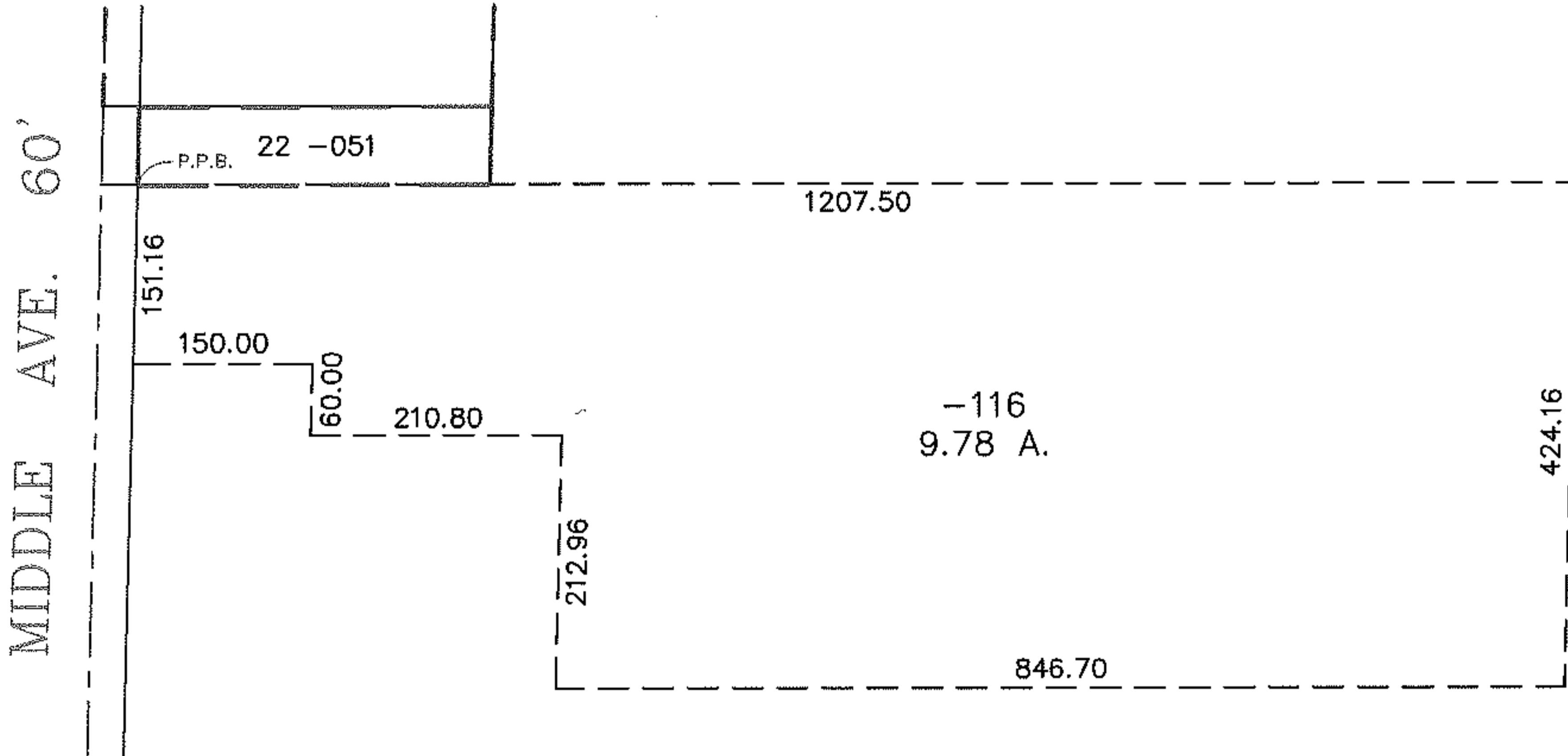
NO. 09-01940-D



DEED CHECK

10-00-004-101-116

9.78 A.



SPLITS/DEEDS PROCESSED

LORAIN COUNTY TAX MAP DEPARTMENT
226 MIDDLE AVE. ELYRIA, OHIO

SURVEYED BY: JAMES H. SCHMIDT
 CLOSURE: 0.01 : 10,000
 MAP PAGE(S): 10-00-004-A
 APPROVED BY: TJS DATE: 12/31/09
 SCALE: 1" = 200 PRIOR INSTRUMENT: DV XXXX/XXX