

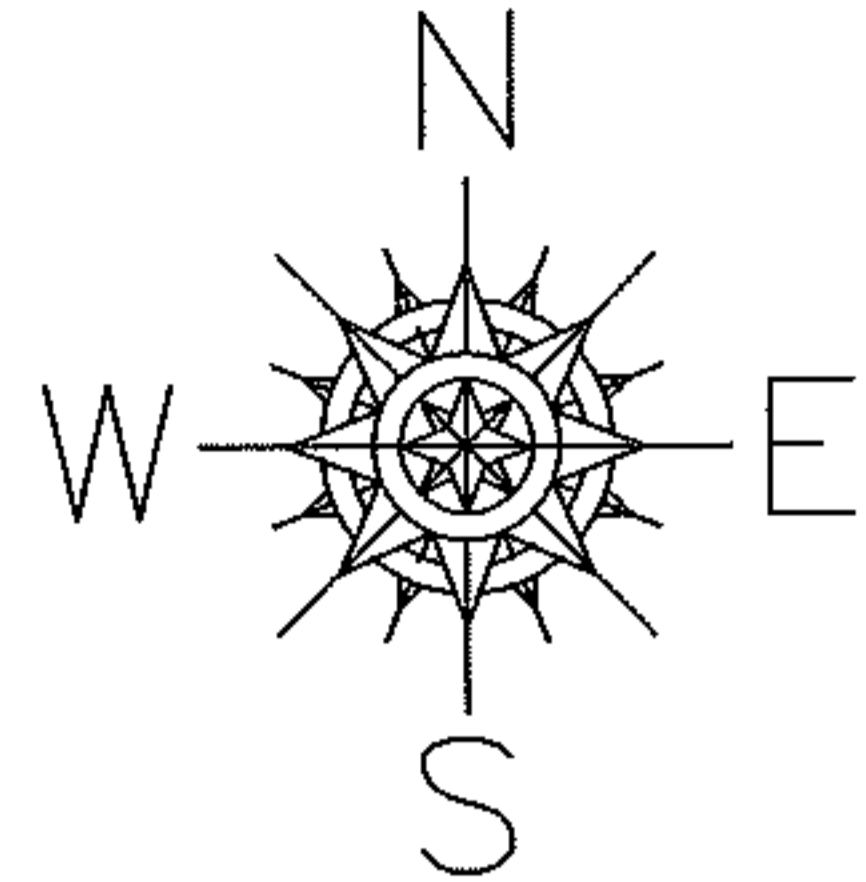
RASTER

PARENT PARCEL: 01-00-006-101-051 & 01-00-007-101-013

CHILD PARCEL: XX-XX-XXX-XXX-XXX

STARTING POINT: XXXXXX

09-01935-C



ACREAGE CORRECTION

01-00-006-101-051

~~13.59 A.~~

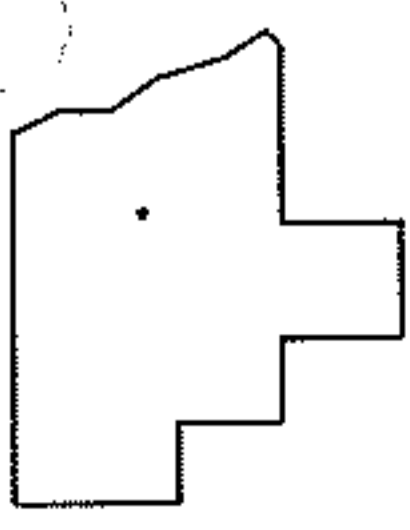
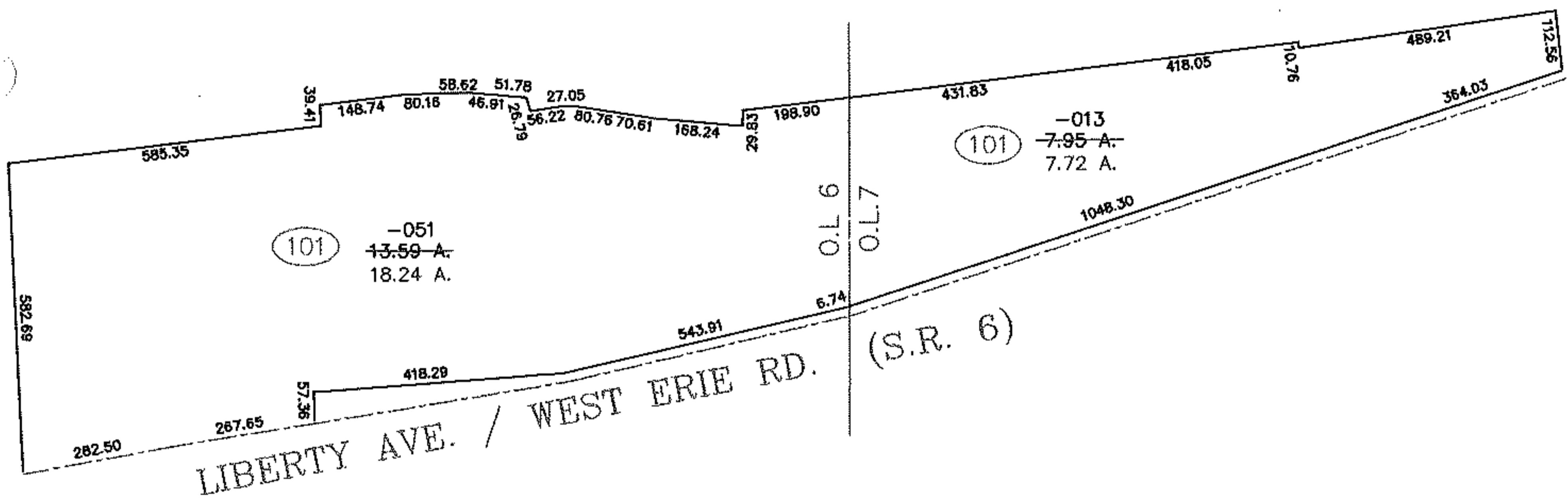
18.24 A.

01-00-007-101-013

~~7.95 A.~~

7.72 A.

AC. CORR. PER SURV.
MICHAEL F. FELDBUSCH



SPLITS/DEEDS PROCESSED
LORAIN COUNTY TAX MAP DEPARTMENT
226 MIDDLE AVE. ELYRIA, OHIO

SURVEYED BY: MICHAEL F. FELDBUSCH
CLOSURE: 0.01 : 10,000
MAP PAGE(S): 1-C&D
APPROVED BY: TJS DATE: 12/15/09
SCALE: 1" = 400 PRIOR INSTRUMENT: 20060181723