

See Split
2/285

Survey Final 2/10/22

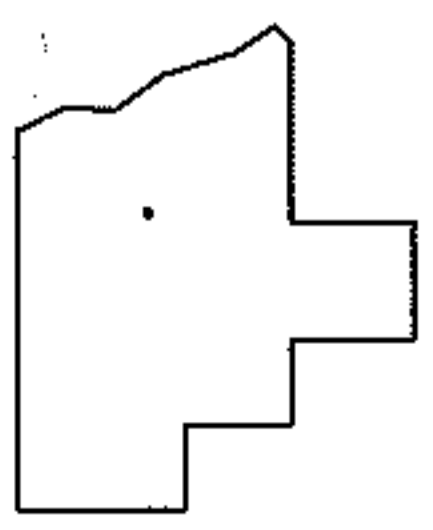
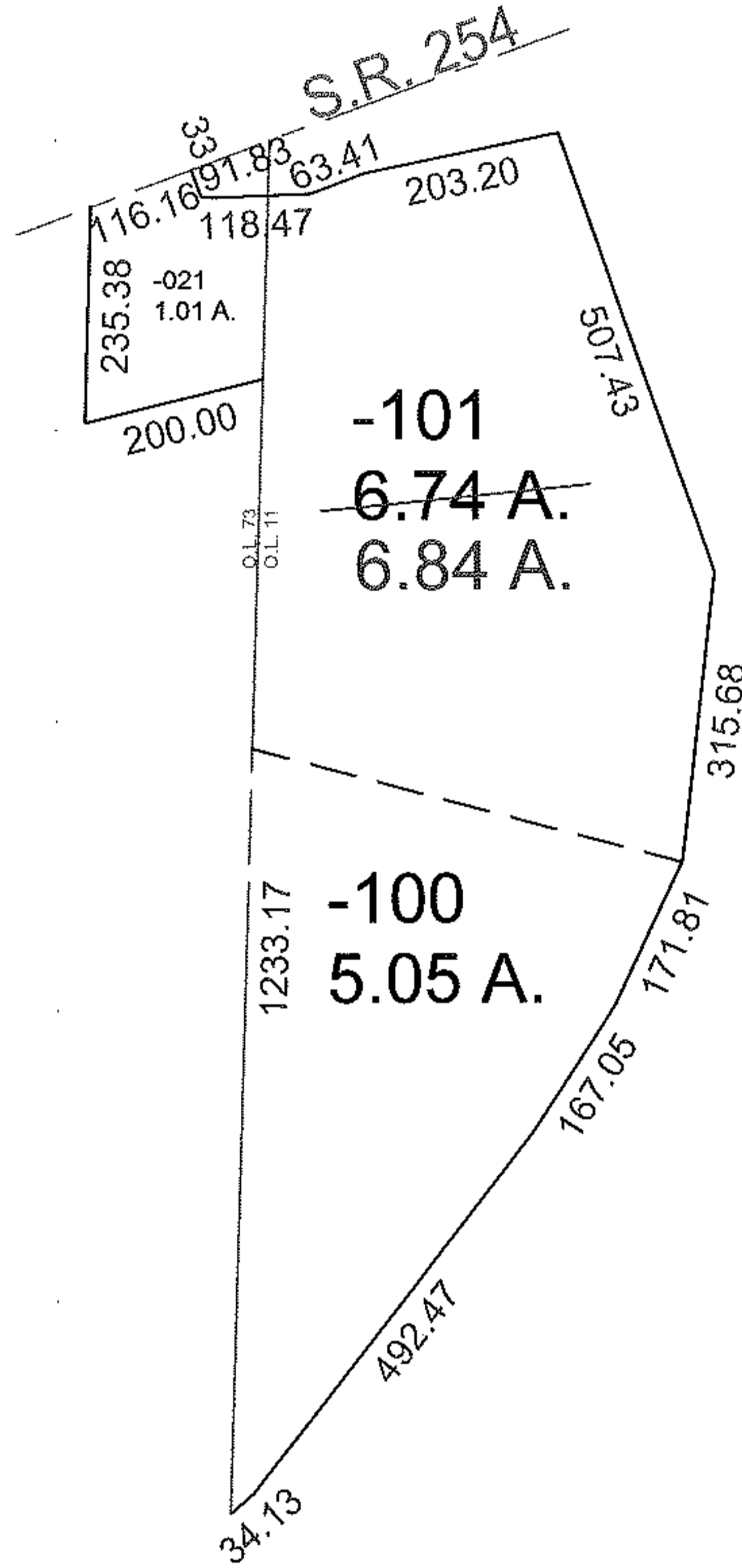
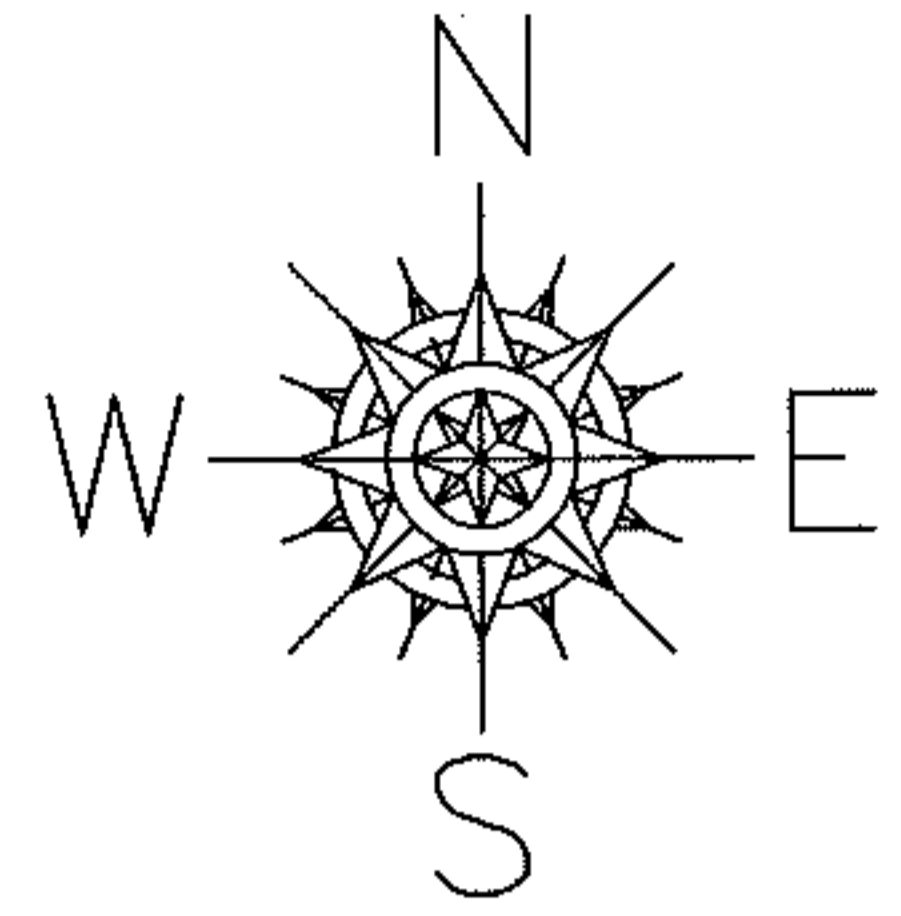
PARENT PARCEL: 03-00-011-102-101

CHILD PARCEL: --SAME--

STARTING POINT: INT CL S.R. 254 AND W LINE OF O.L. 73

09-01934-C

AC. CORR.
PER SURVEY
NEIL HETRICK



SPLITS/DEEDS PROCESSED

LORAIN COUNTY TAX MAP DEPARTMENT
226 MIDDLE AVE. ELYRIA, OHIO

SURVEYED BY: NEIL HETRICK

CLOSURE: 1:10,000

MAP PAGE(S): 03-00-011-A

APPROVED BY: DRH DATE: 12/22/2009

SCALE: 1"= 300 PRIOR INST.: 20090319286