

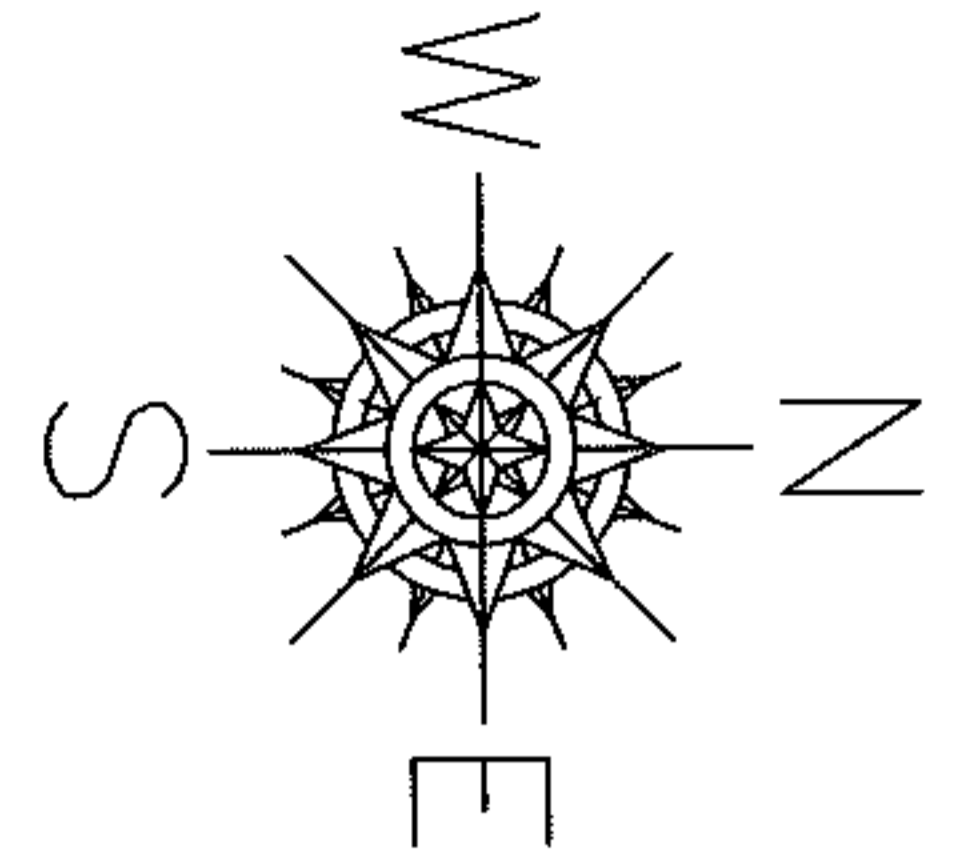
MASTER

09-01928-D

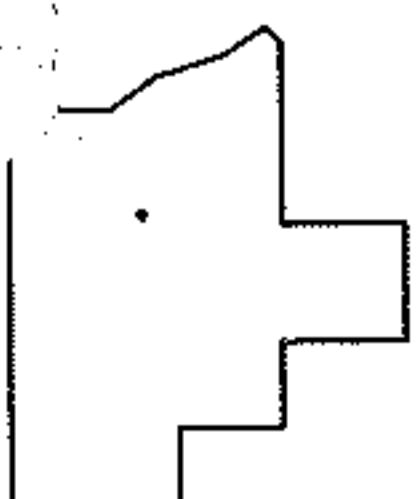
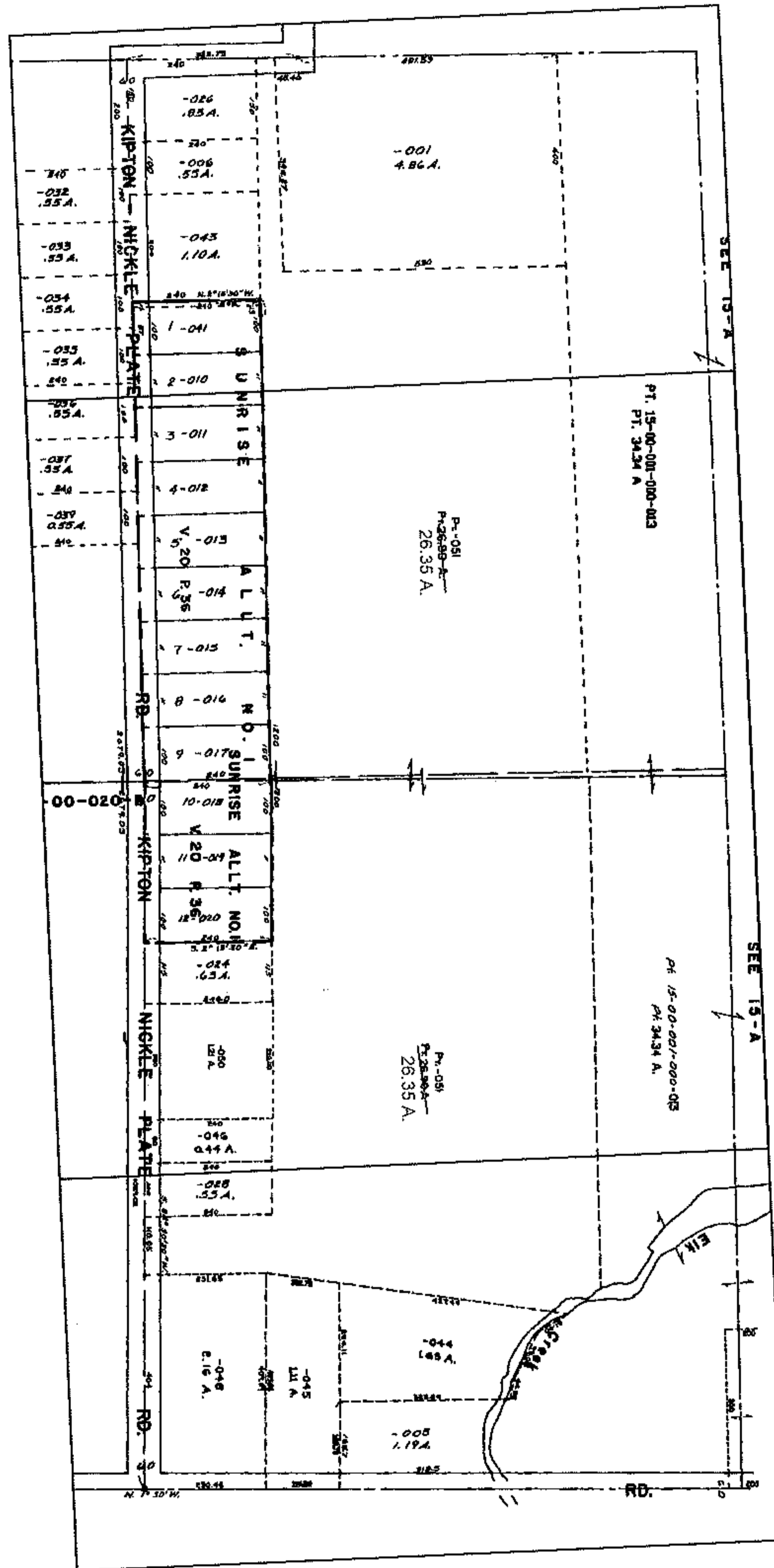
PARENT PARCEL: 15-00-020-000-051

CHILD PARCEL: --SAME--

STARTING POINT:



AC. CORR.  
PER DEEDS



SPLITS/DEEDS PROCESSED

LORAIN COUNTY TAX MAP DEPARTMENT  
226 MIDDLE AVE. ELYRIA, OHIO

SURVEYED BY: N/A  
CLOSURE: N/A  
MAP PAGE(S): 15-00-020-A, B  
APPROVED BY: DRH DATE: 12/21/2009  
SCALE: NOT TO SCALE PRIOR INST.: 20030914013