

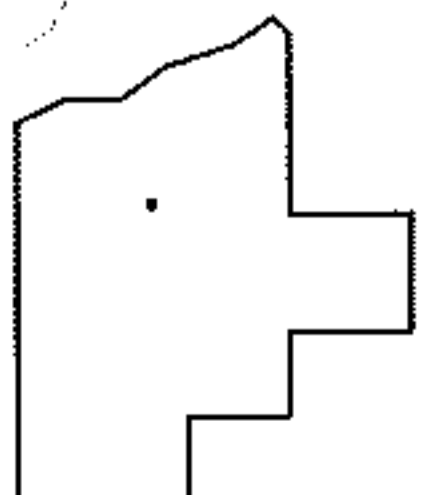
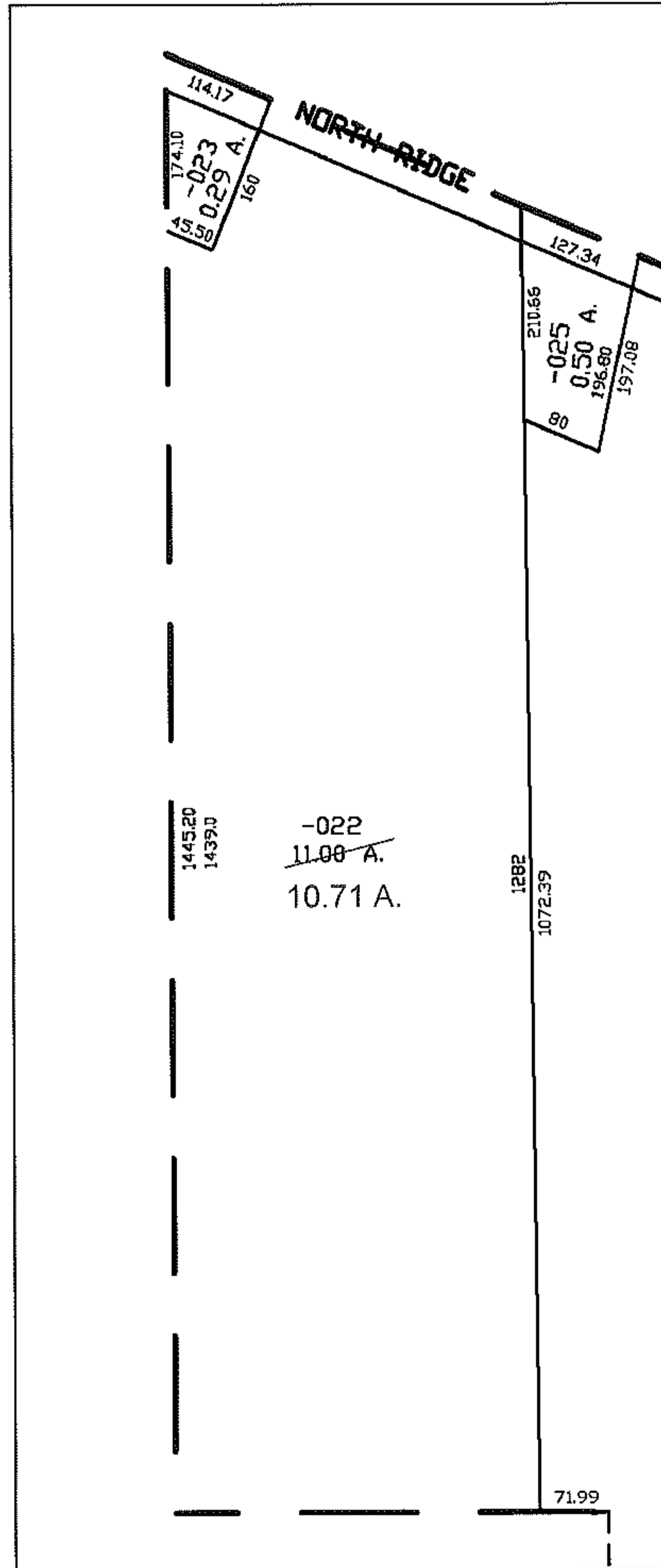
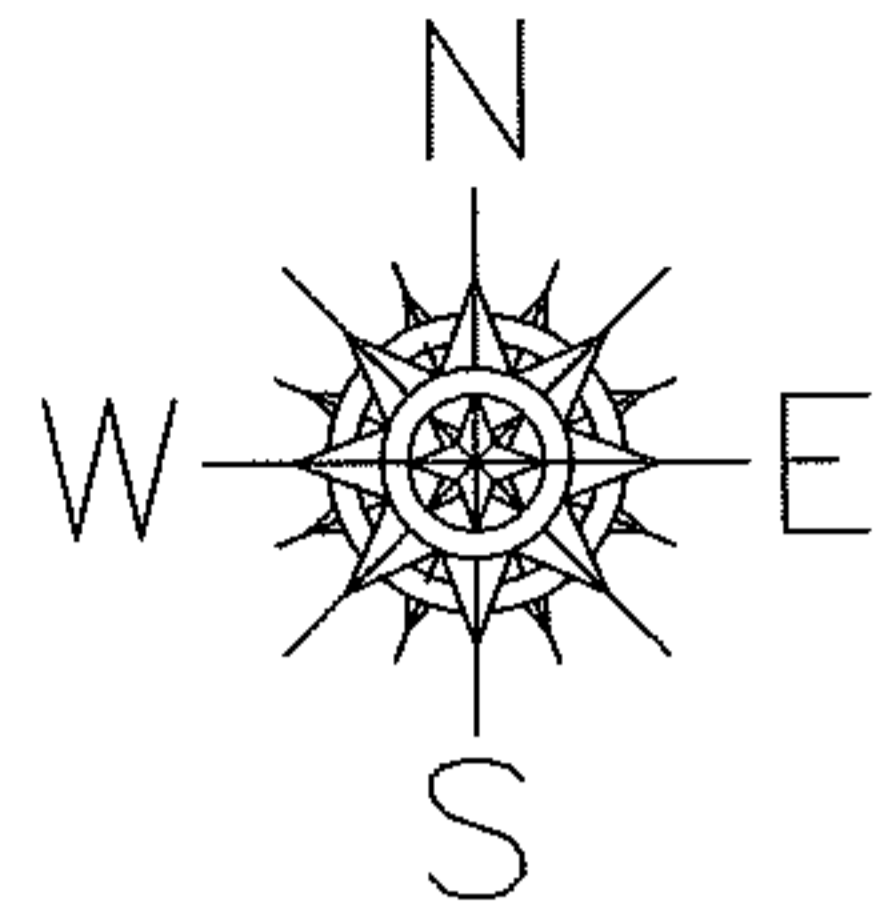
PARENT PARCEL: 04-00-015-110-022

CHILD PARCEL: --SAME--

09-01924-C

STARTING POINT:

AC. CORR.  
PER DEEDS  
O.R. 185/251  
AC. DID NOT  
REFLECT  
EXCEPTION



SPLITS/DEEDS PROCESSED

LORAIN COUNTY TAX MAP DEPARTMENT  
226 MIDDLE AVE. ELYRIA, OHIO

SURVEYED BY: N/A

CLOSURE: N/A

MAP PAGE(S): 04-00-015-H

APPROVED BY: DRH DATE: 11/12/2009

SCALE: NOT TO SCALE PRIOR INST.: 2004021453