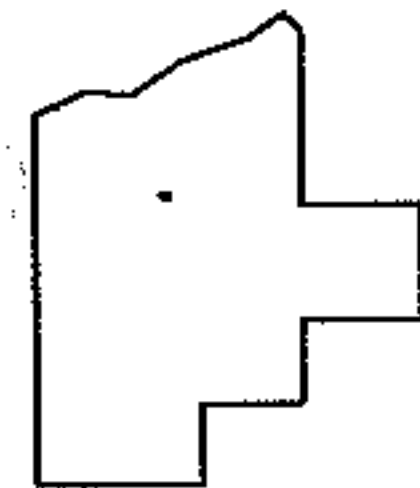
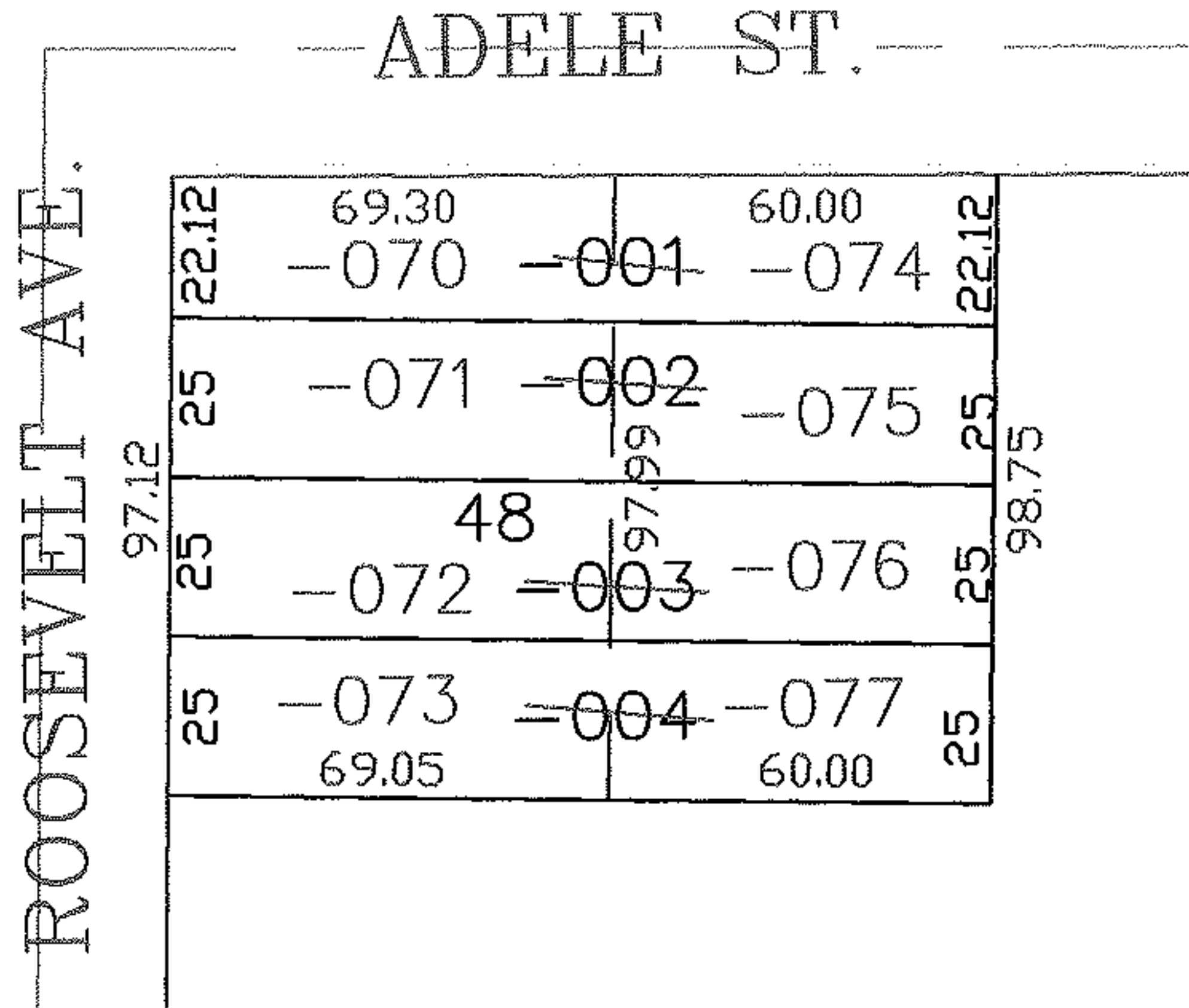
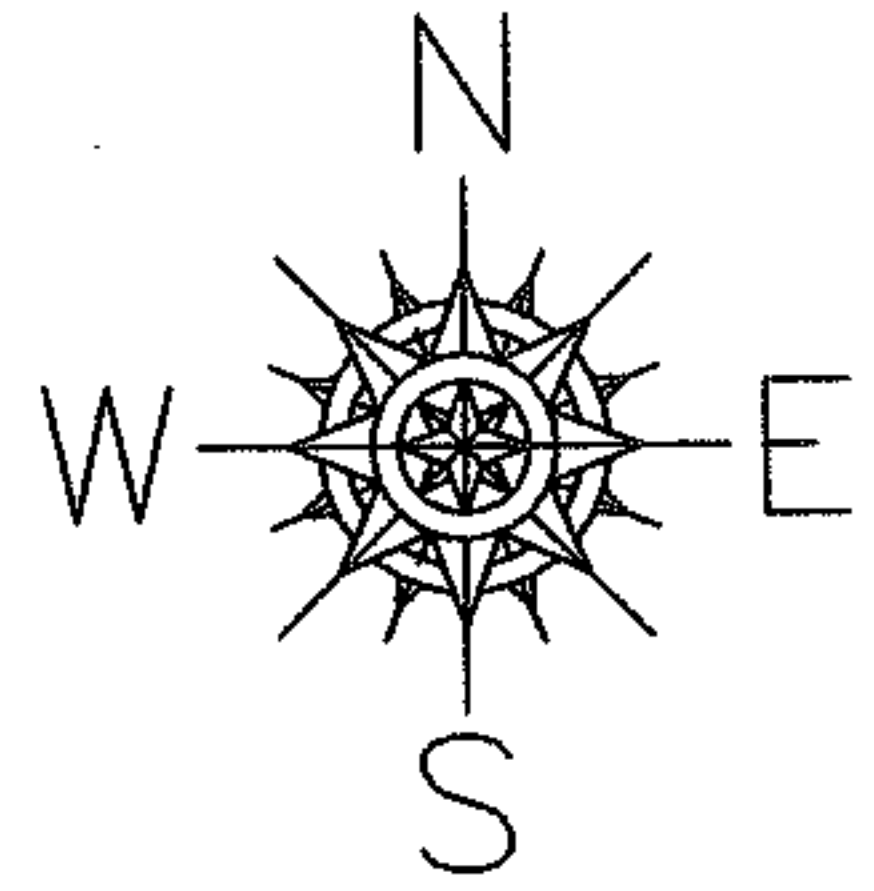


PARENT PARCEL: 07-00-007-109-001 THRU -004

CHILD PARCEL: 07-00-007-109-070 THRU -077

STARTING POINT: SIDELINE OF ADELE ST. & ROOSEVELT AVE.

NO. 01923



SPLITS/DEEDS PROCESSED

LORAIN COUNTY TAX MAP DEPARTMENT  
226 MIDDLE AVE. ELYRIA, OHIO

SURVEYED BY: DANE HAPONEK

CLOSURE: 0.00 ; 10.000

MAP PAGE(S): 07-00-007-A

APPROVED BY: JAH DATE: 5-24-05

SCALE: 1" = 100 PRIOR INSTRUMENT: 20050052902