

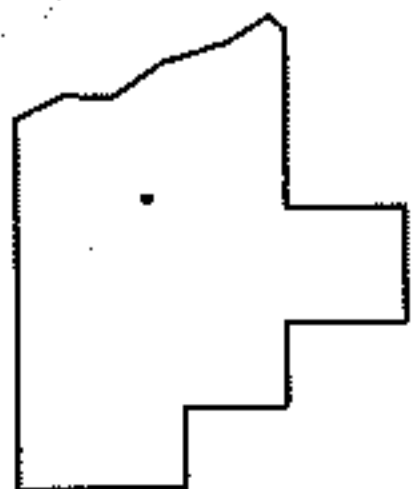
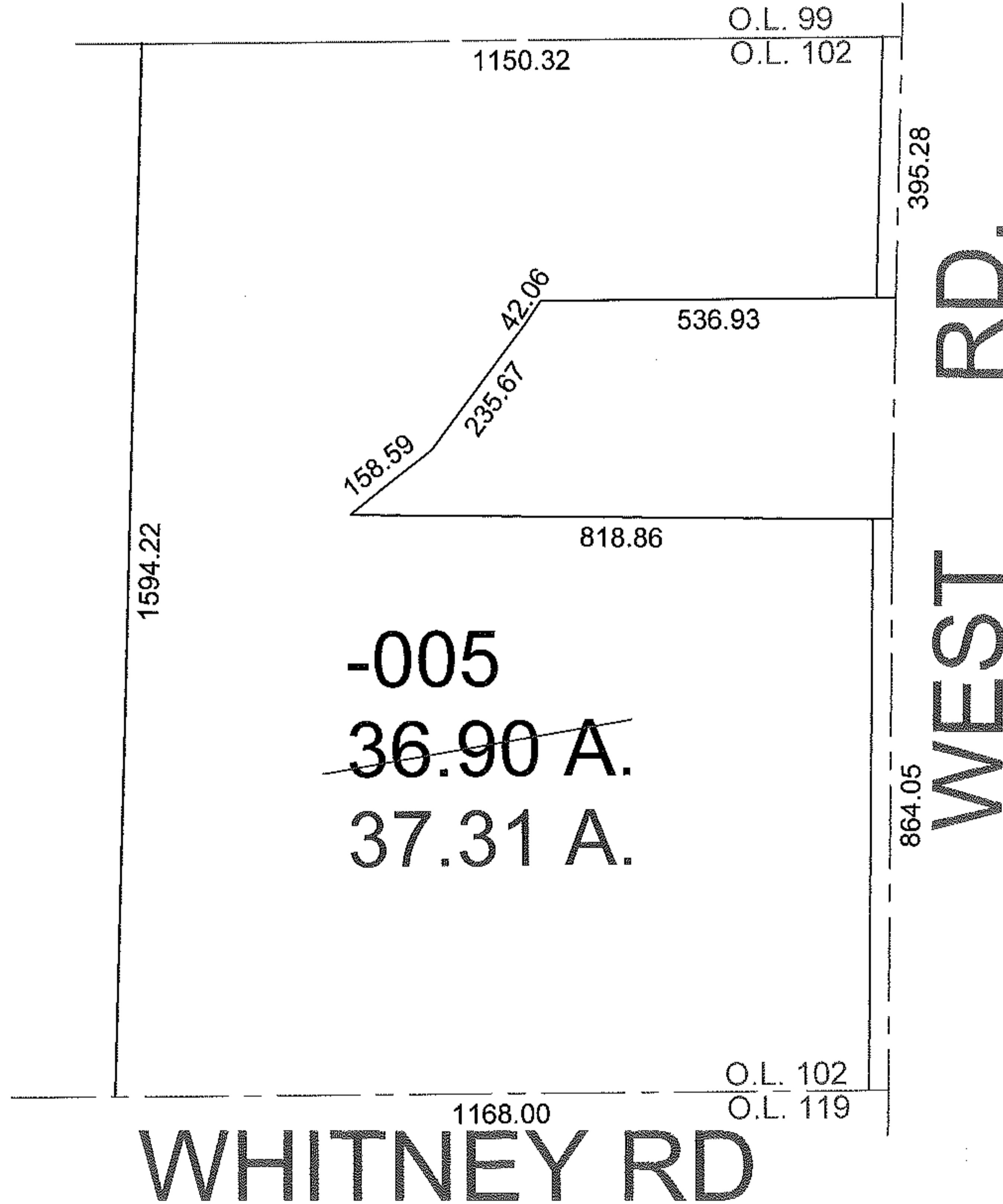
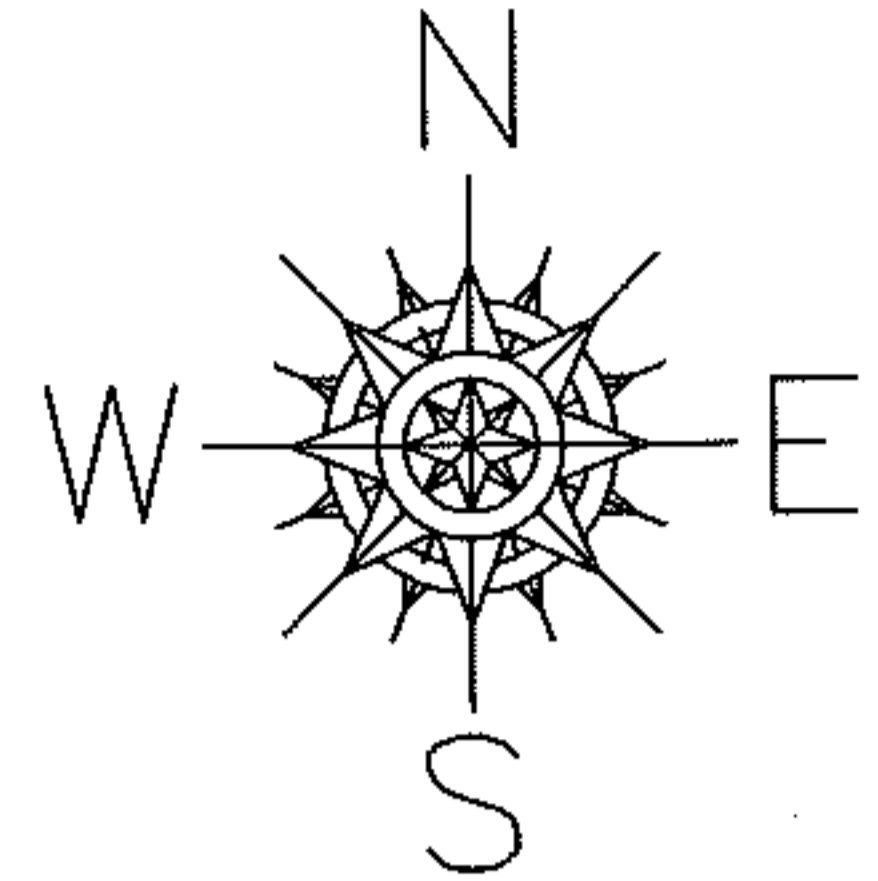
PARENT PARCEL: 14-00-102-000-005

LD PARCEL: --SAME--

STARTING POINT: INT CL WHITNEY RD AND WEST RD

09-01921-C

AC. CORR.
PER SURVEY
THOMAS A. SIMON



SPLITS/DEEDS PROCESSED

LORAIN COUNTY TAX MAP DEPARTMENT
226 MIDDLE AVE. ELYRIA, OHIO

SURVEYED BY: THOMAS A. SIMON

CLOSURE: 1:10,000

MAP PAGE(S): 14-H

APPROVED BY: DRH DATE: 11/6/2009

SCALE: 1" = 300 PRIOR INST.: 1179/608