

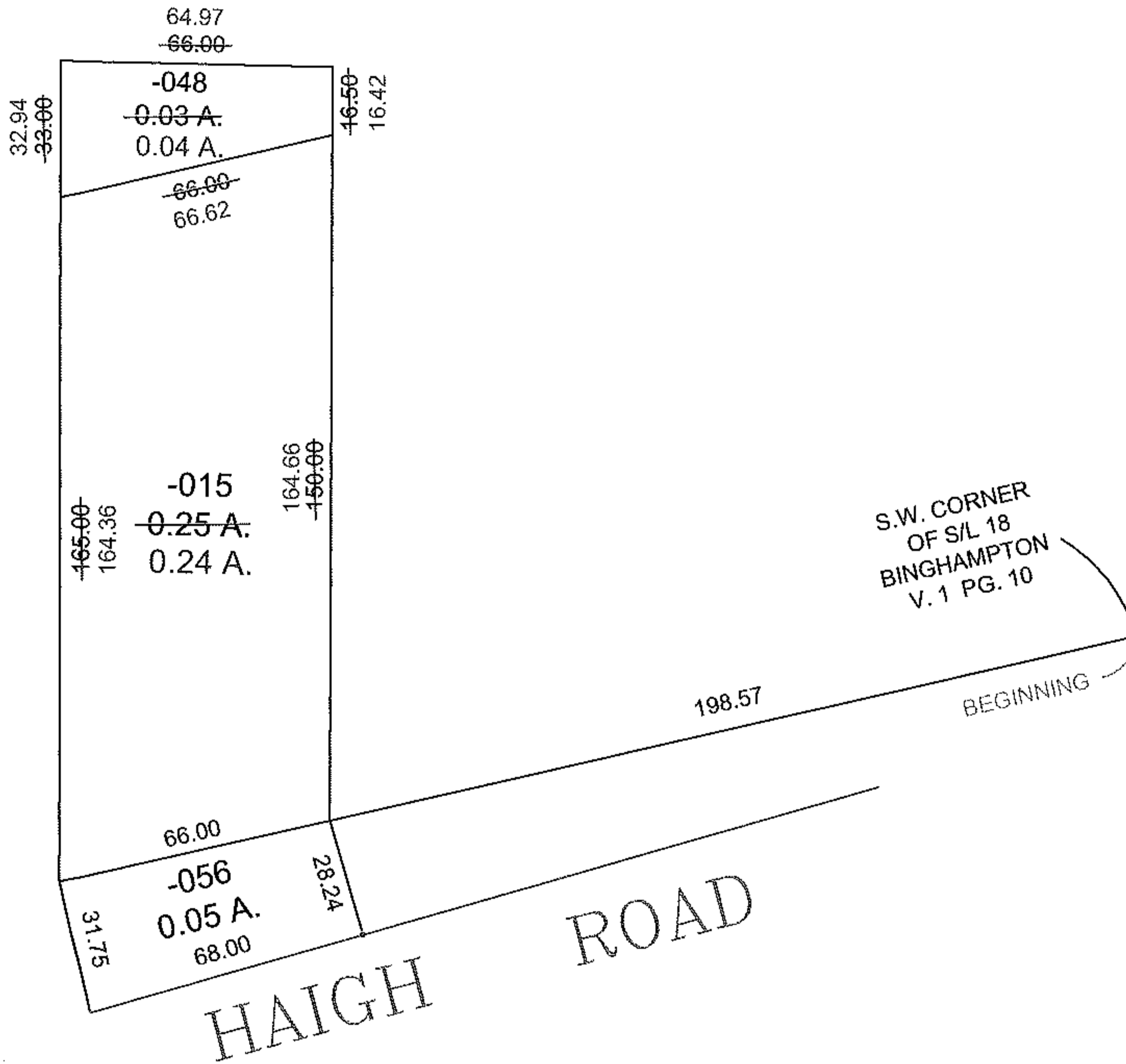
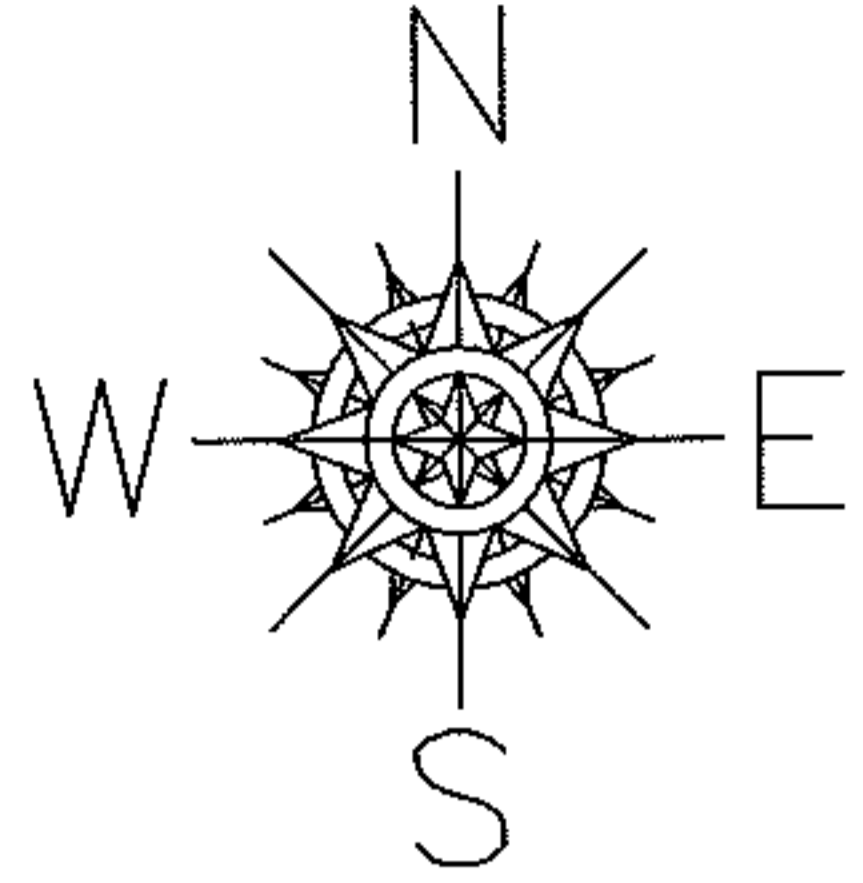
RASTER

PARENT PARCEL: 13-11-016-101-015, -048, -056

CHILD PARCEL: XX-XX-XXX-XXX-XXX

STARTING POINT: S.W. CORNER OF SL 85

09-01912-D



SPLITS/DEEDS PROCESSED

LORAIN COUNTY TAX MAP DEPARTMENT  
226 MIDDLE AVE. ELYRIA, OHIO

SURVEYED BY: EDWARD DUDLEY III

CLOSURE: 0.01 : 10,000

MAP PAGE(S): 13-11-016

APPROVED BY: TJS DATE: 10/28/09

SCALE: 1"= 50' PRIOR INST.: 20090300492

