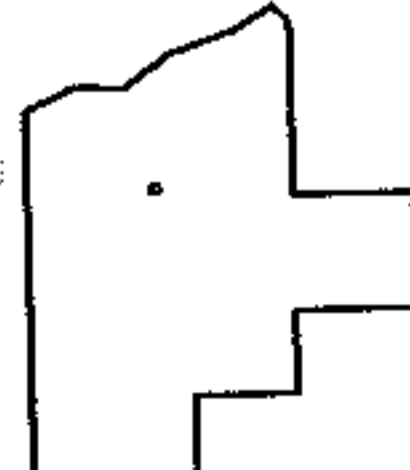
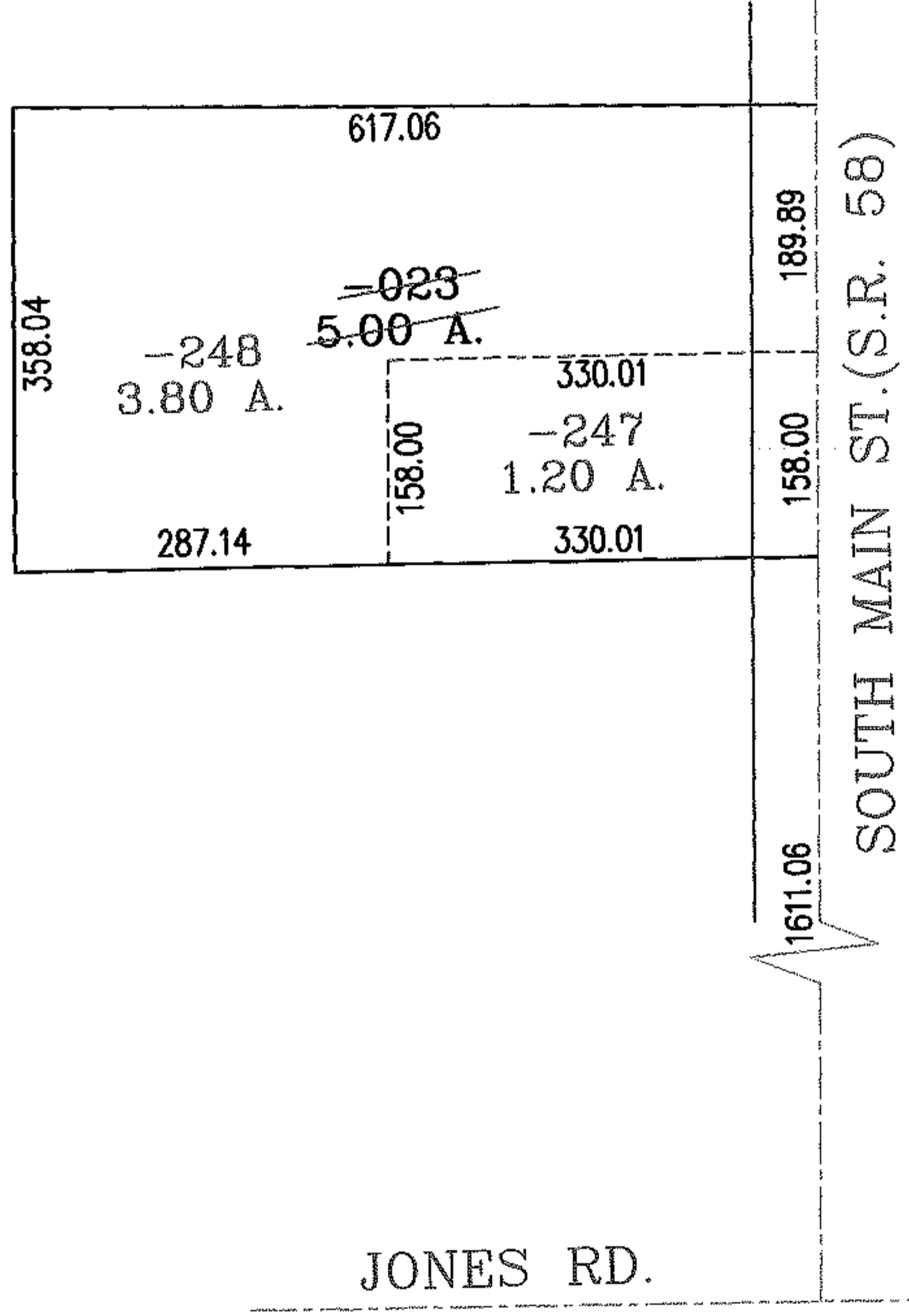
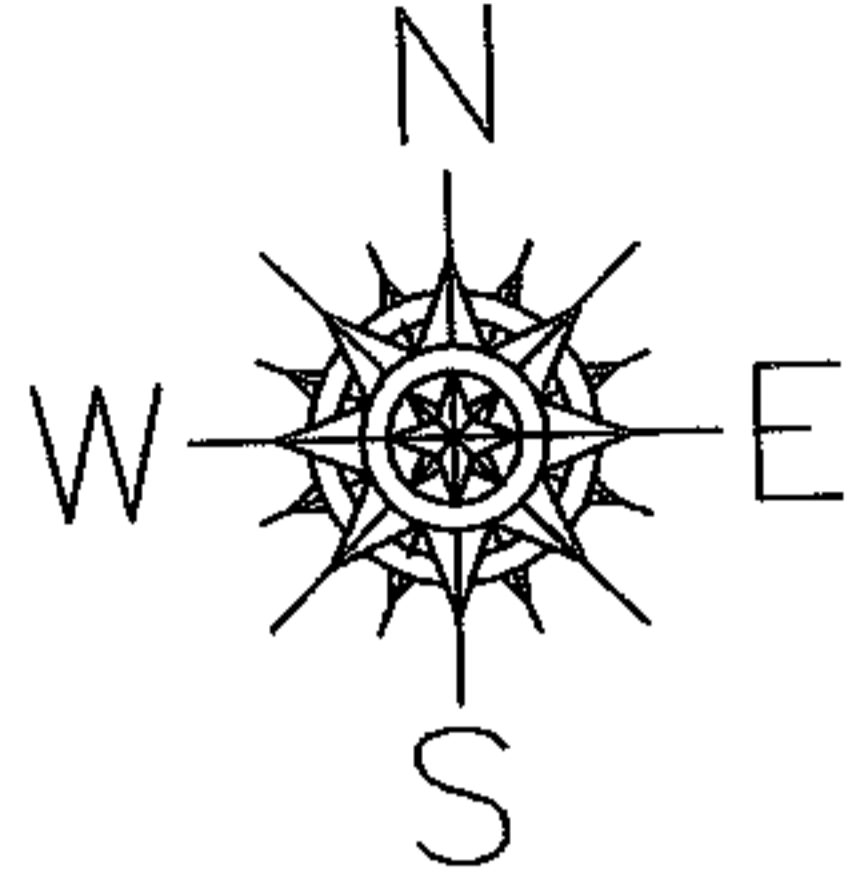


RASTER

PARENT PARCEL: 18-00-026-101-023
CHILD PARCEL: 18-00-026-101-247,-248
STARTING POINT: INTERSECTION OF C/L OF S.R. 58 AND C/L OF JONES RD.

NO. 01909



SPLITS/DEEDS PROCESSED
LORAIN COUNTY TAX MAP DEPARTMENT
226 MIDDLE AVE. ELYRIA, OHIO

SURVEYED BY: THOMAS M. SNEZEK
CLOSURE: .00:10.000
MAP PAGE(S): 18-00-026-B
APPROVED BY: RRM DATE: 5-3-05
SCALE: 1" = 200' PRIOR INSTRUMENT: 20020821739