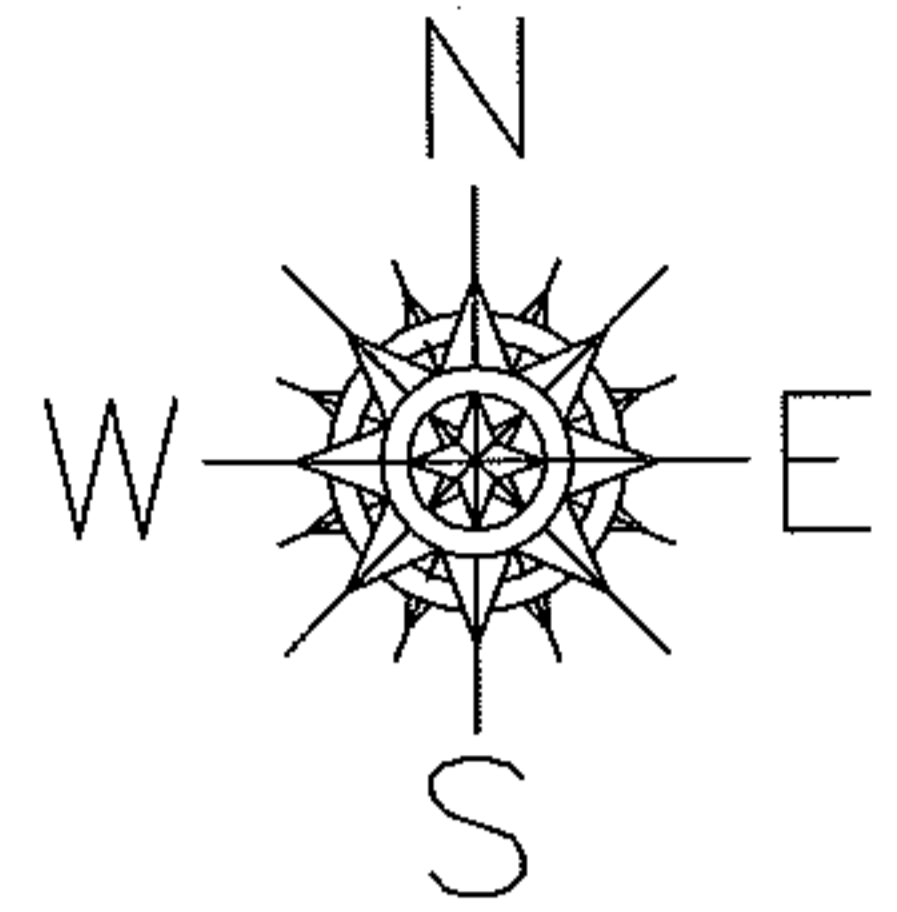


PARENT PARCEL: 06-26-029-000-005

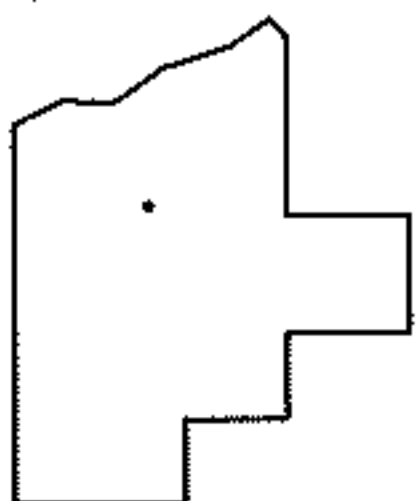
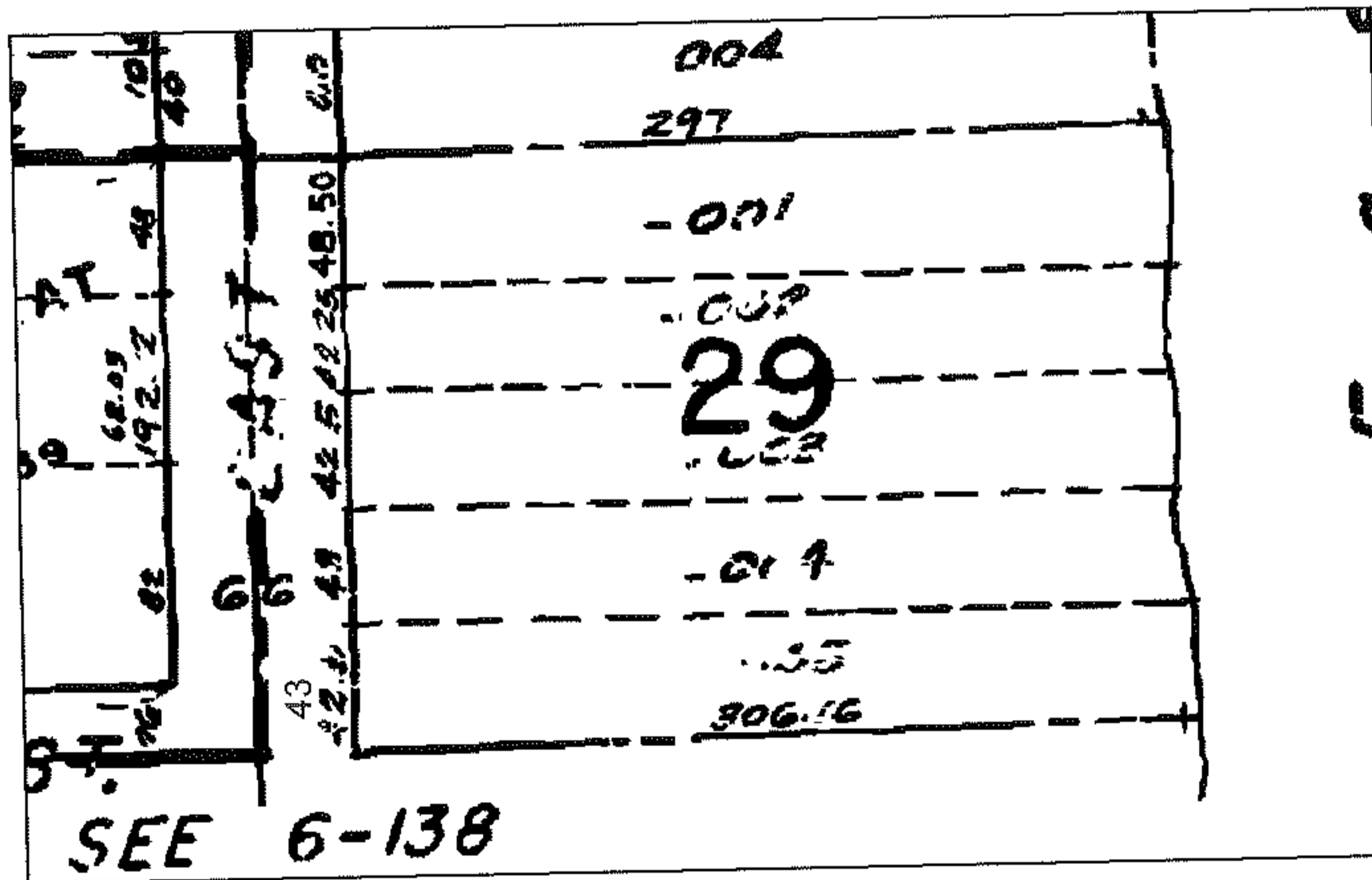
CHILD PARCEL: --SAME--

STARTING POINT: INT 7TH ST AND EAST AVE

09-01909-C



FRONTAGE CORR PER DEED



SPLITS/DEEDS PROCESSED

LORAIN COUNTY TAX MAP DEPARTMENT
226 MIDDLE AVE. ELYRIA, OHIO

SURVEYED BY: N/A

CLOSURE: N/A

MAP PAGE(S): 06-120

APPROVED BY: DRH DATE: 11/19/2009

SCALE: NOT TO SCALE PRIOR INST.: 20030970687