

RASTER

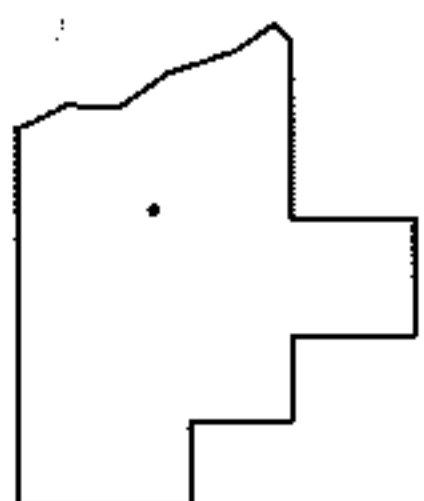
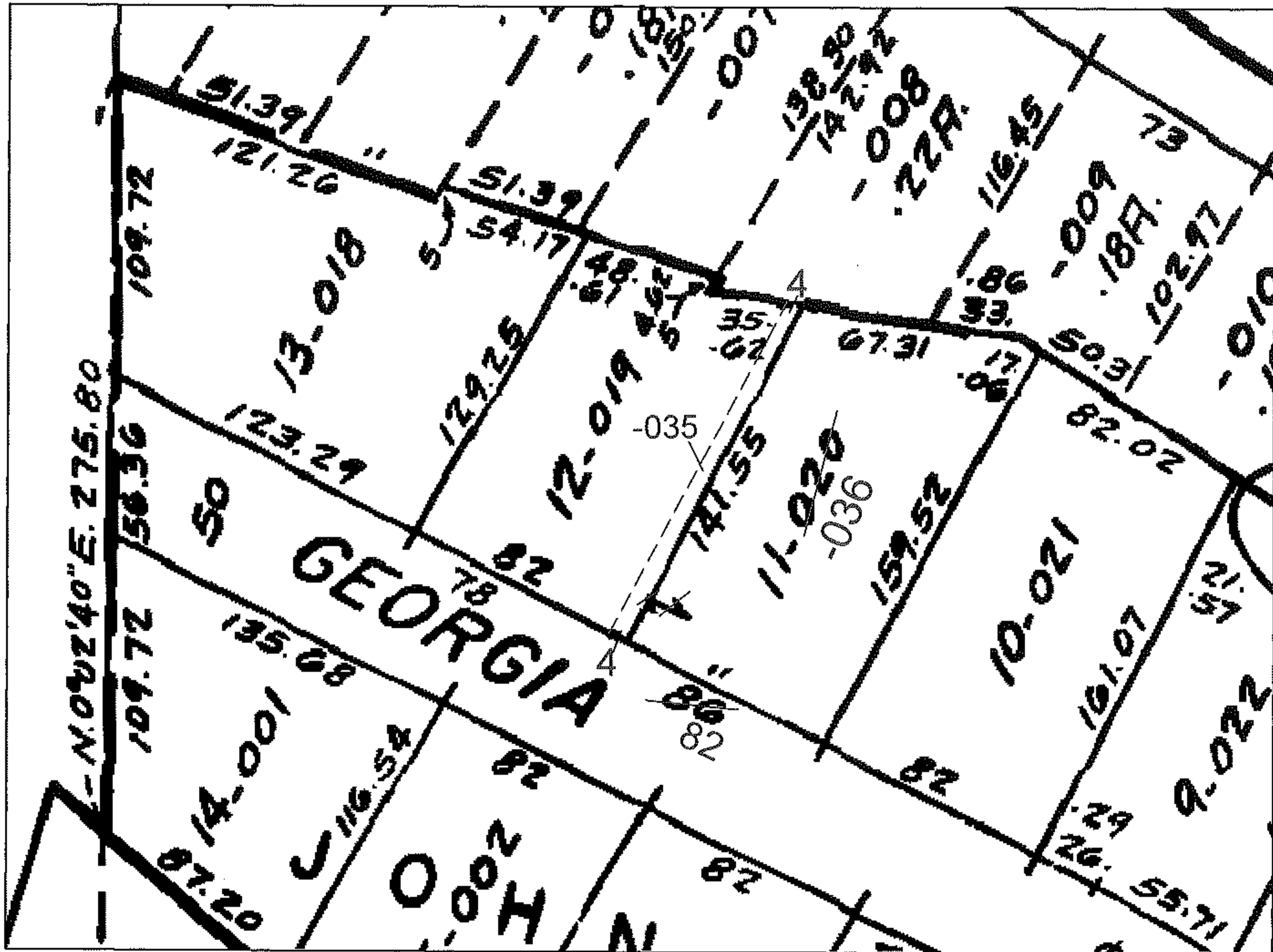
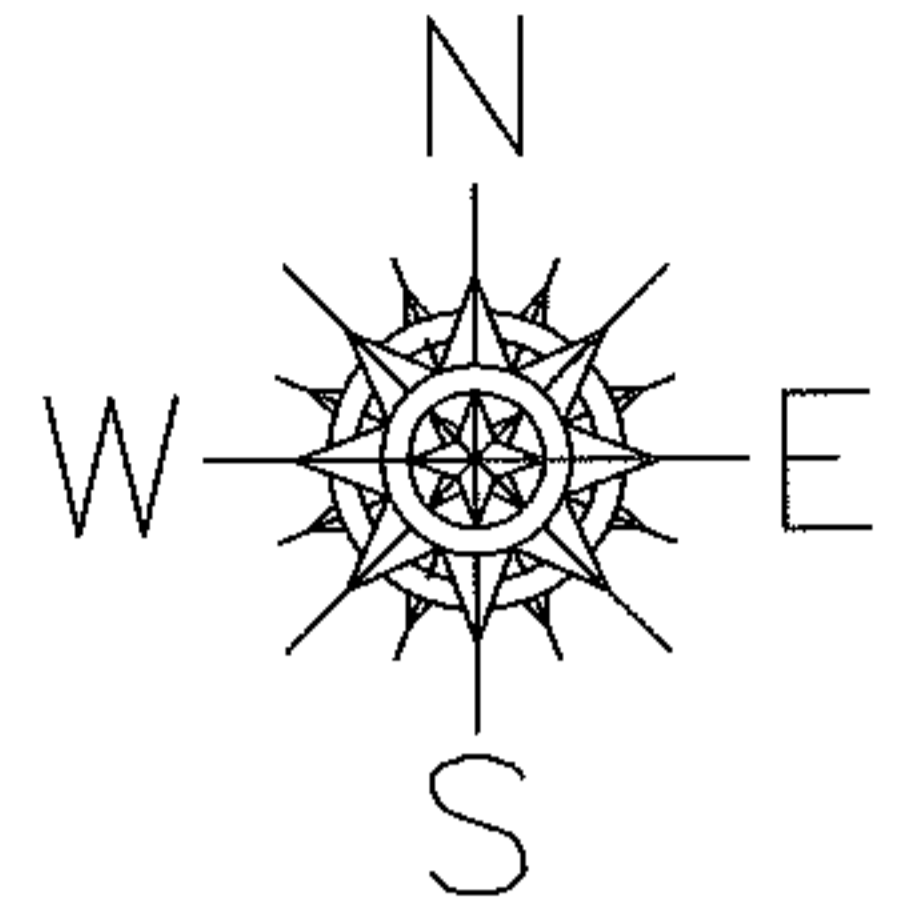
PARENT PARCEL: 05-00-036-105-020

CHILD PARCEL: 05-00-036-105-035 & -036

STARTING POINT: S/L 11 IN JOHN POORE SUBDIVISION V 17 P 24

09-01902-U

UNCOMBINATION & MAP CORR PER DEED



SPLITS/DEEDS PROCESSED

LORAIN COUNTY TAX MAP DEPARTMENT
226 MIDDLE AVE. ELYRIA, OHIO

SURVEYED BY: N/A

CLOSURE: N/A

MAP PAGE(S): 05-00-036-A

APPROVED BY: DRH DATE: 10/20/2009

SCALE: NOT TO SCALE PRIOR INST.: 20060956472