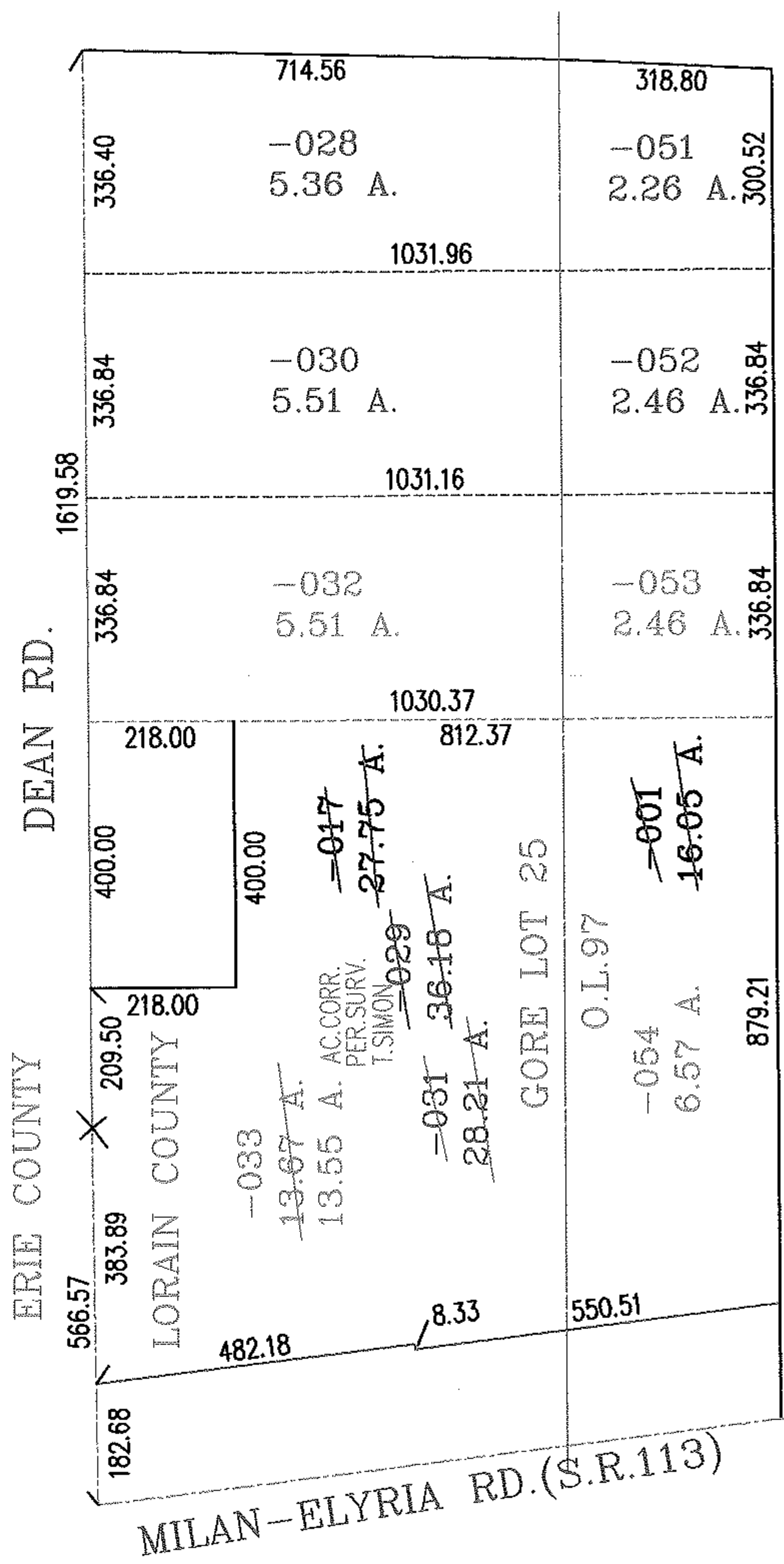
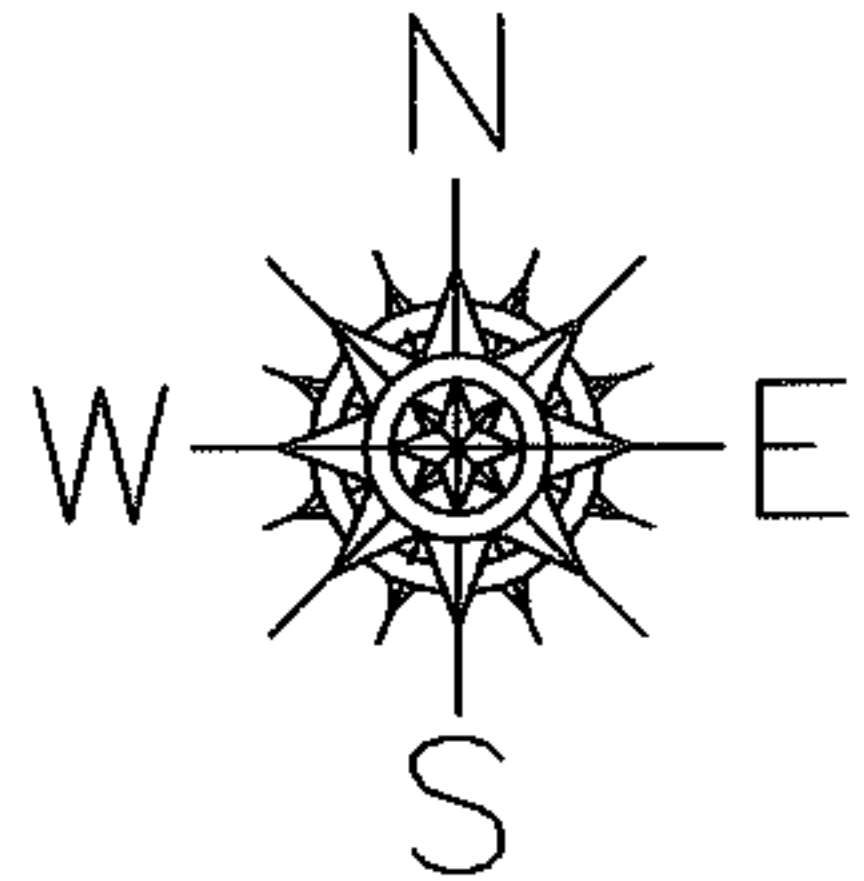


RASTER

PARENT PARCEL: 08-20-025-000-017,08-00-097-000-001
CHILD PARCEL: 08-20-025-000-028 THRU -033,08-00-097-000-051 THRU -054
STARTING POINT: INTERSECTION OF C/L OF S.R. 113 AND C/L OF DEAN RD.

NO. 01892



SPLITS/DEEDS PROCESSED
LORAIN COUNTY TAX MAP DEPARTMENT
226 MIDDLE AVE. ELYRIA, OHIO

SURVEYED BY: THOMAS A. SIMON
CLOSURE: .01:10.000
MAP PAGE(S): 08-00-097-A
APPROVED BY: RRM DATE: 3-31-05
SCALE: 1" = 300 PRIOR INSTRUMENT: 20050058499